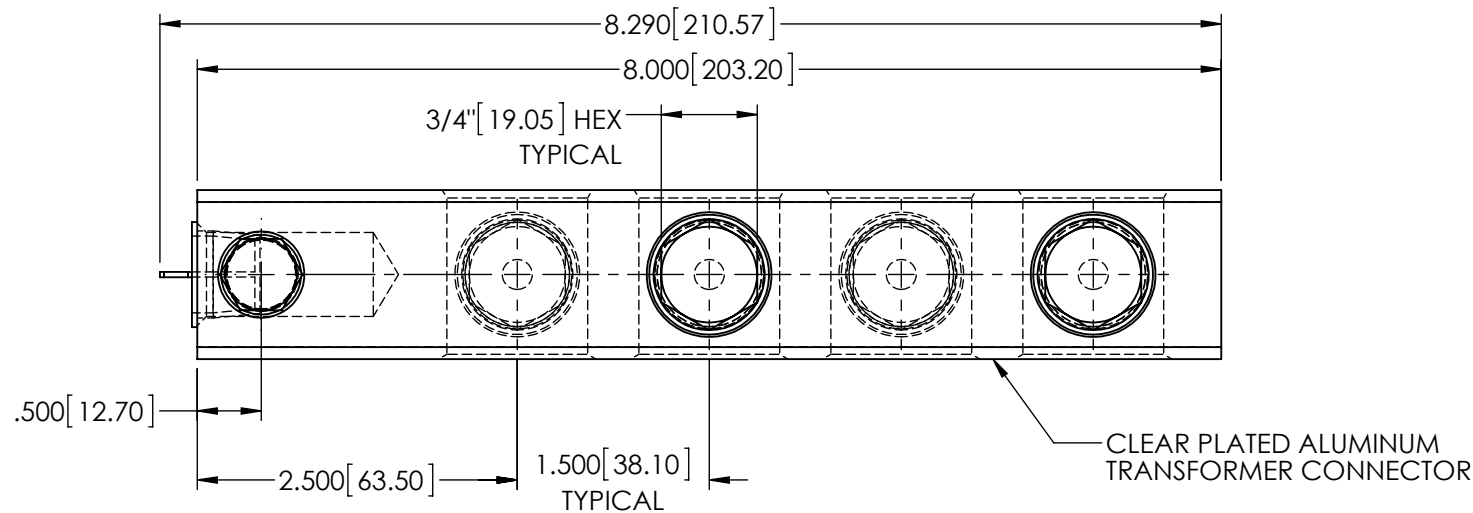
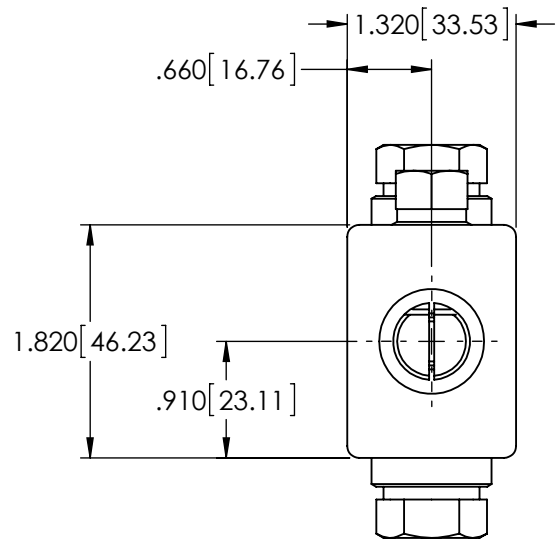
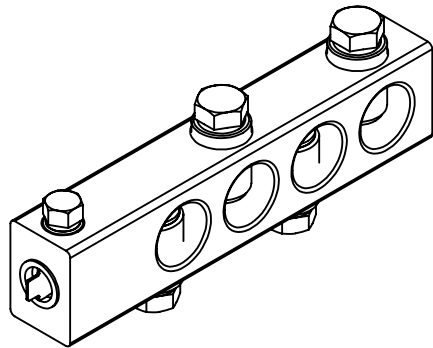


REVISIONS					
REV.	DATE	ECN #	DESCRIPTION	BY	APPROVED



5/8" - 18 HEX SOCKET SET SCREW
ALUMINUM

SHIPPING PLUG

3/4"-11 TAPPED HOLE TO BE
USED FOR A 5/8"-11 STUD
(CONTAINS OXIDE INHIBITOR)

STAMP ON BOTTOM FACE
"H-J
AS1819-001
750 MCM - 1/0"

15/16" - 16 HEX SOCKET SET SCREW
ALUMINUM (4 PLACES)

.910 [23.11]
TYPICAL

Ø 1.100 [27.94]
THRU HOLE
(4 PLACES)

- NOTES:
1. ALL DIMENSIONS ARE REFERENCE ONLY UNLESS OTHERWISE NOTED.
 2. CONDUCTOR RANGE: 750 MCM - 1/0
 3. MEETS ANSI C119.4 CLASS A SPECIFICATIONS.

PROPRIETARY AND CONFIDENTIAL
THE INFORMATION CONTAINED IN THIS
DRAWING IS THE SOLE PROPERTY OF
H-J ENTERPRISES, INC. ANY
REPRODUCTION IN PART OR AS A WHOLE
WITHOUT THE WRITTEN PERMISSION OF
H-J ENTERPRISES, INC. IS
PROHIBITED.

TOLERANCES (EXCEPT AS NOTED)	
DECIMAL	+/-
FRACTIONAL	+/-
ANGULAR	+/-



H - J ENTERPRISES, INC.
3010 HIGH RIDGE BLVD. HIGH RIDGE, MO. 63049 USA
PHONE 1-636-677-3421 FAX 1-636-376-1915

TRANSFORMER CONNECTOR ASSEMBLY

MATERIAL (SEE DRAWING)

CHK'D	CJT	APP'D	04/02/13
SCALE	N.T.S.		

DRAWING NO.
AS1819-001

DRAWN BY
CLS

DATE
4/2/2013