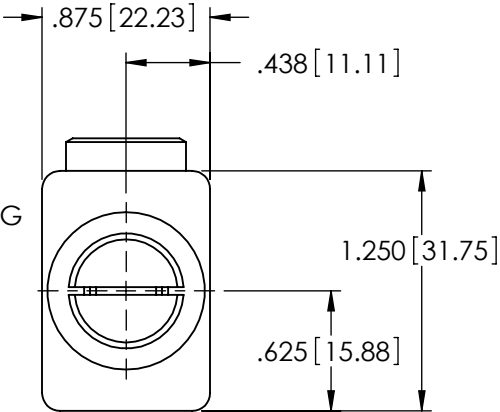
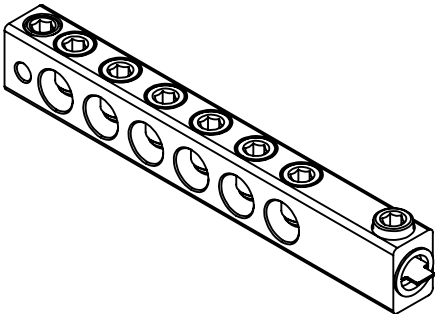
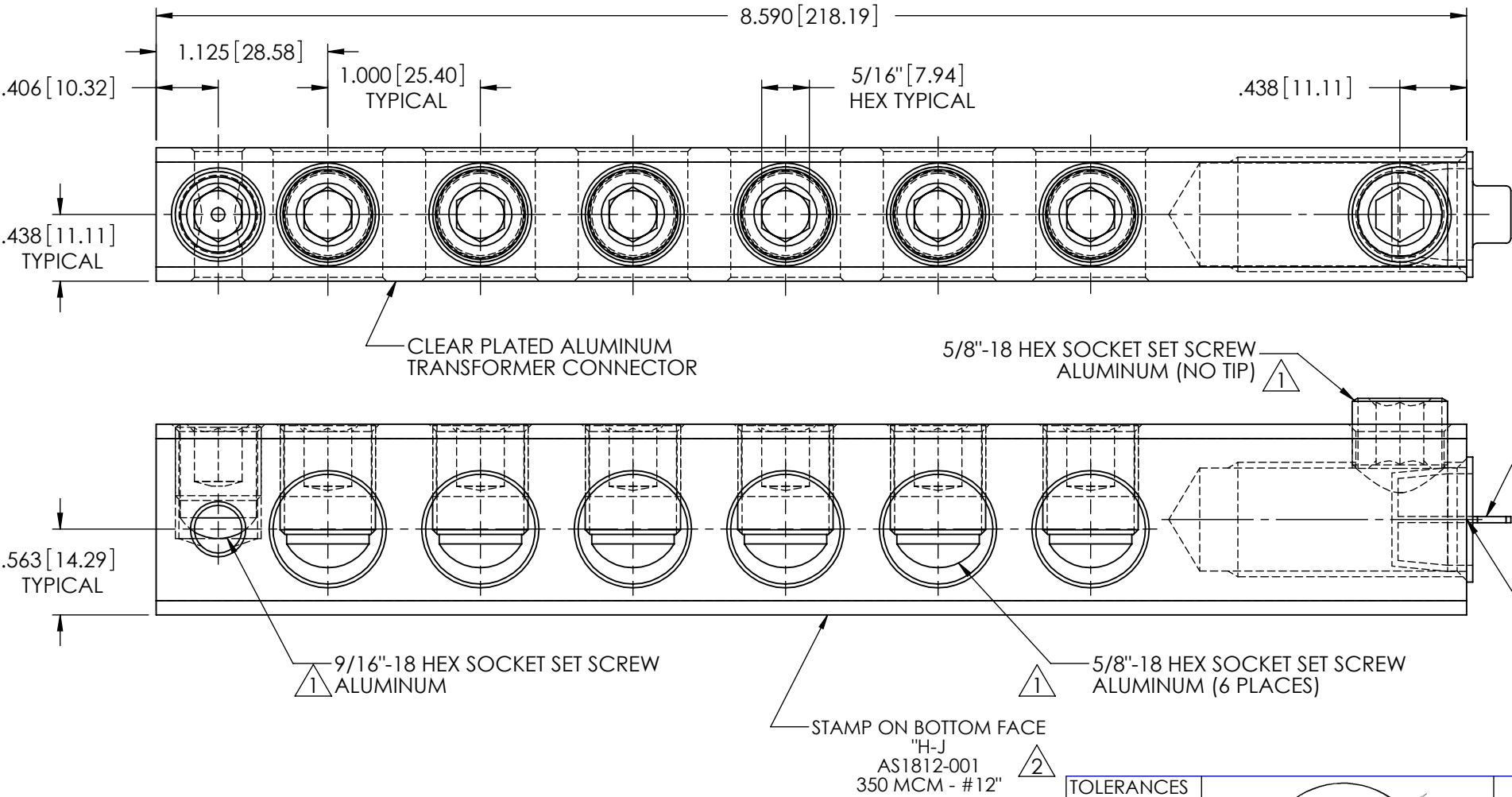


REVISIONS					
REV.	DATE	ECN #	DESCRIPTION	BY	APPROVED
1	12/19/2012	PQI# 11212005	REMOVED "ANODIZED" FROM SET SCREWS, WAS PRELIMINARY ASXXXX-109	CLS	PM
2	4/18/2013	HJ13-078	ADDED STAMP CALLOUT	CLS	AB



- NOTES:
1. ALL DIMENSIONS ARE REFERENCE ONLY UNLESS OTHERWISE SPECIFIED.
 2. CONDUCTOR RANGE: 350MCM - #12
 3. MEETS ANSI C119.4 CLASS A SPECIFICATIONS.
 4. EACH CONDUCTOR HOLE CONTAINS OXIDE INHIBITOR.

PROPRIETARY AND CONFIDENTIAL

THE INFORMATION CONTAINED IN THIS DRAWING IS THE SOLE PROPERTY OF H-J ENTERPRISES, INC. ANY REPRODUCTION IN PART OR AS A WHOLE WITHOUT THE WRITTEN PERMISSION OF H-J ENTERPRISES, INC. IS PROHIBITED.

TOLERANCES
(EXCEPT AS NOTED)

DECIMAL
+/-
FRACTIONAL
+/-
ANGULAR
+/-



H - J ENTERPRISES, INC.
3010 HIGH RIDGE BLVD. HIGH RIDGE, MO. 63049 USA
PHONE 1-636-677-3421 FAX 1-636-376-1915

TRANSFORMER CONNECTOR ASSEMBLY

MATERIAL (SEE DRAWING)

CHK'D	CJT	APP'D	04/18/13
SCALE		N.T.S.	

DRAWING NO.
AS1812-001

DRAWN BY
JH

DATE
12/8/2009