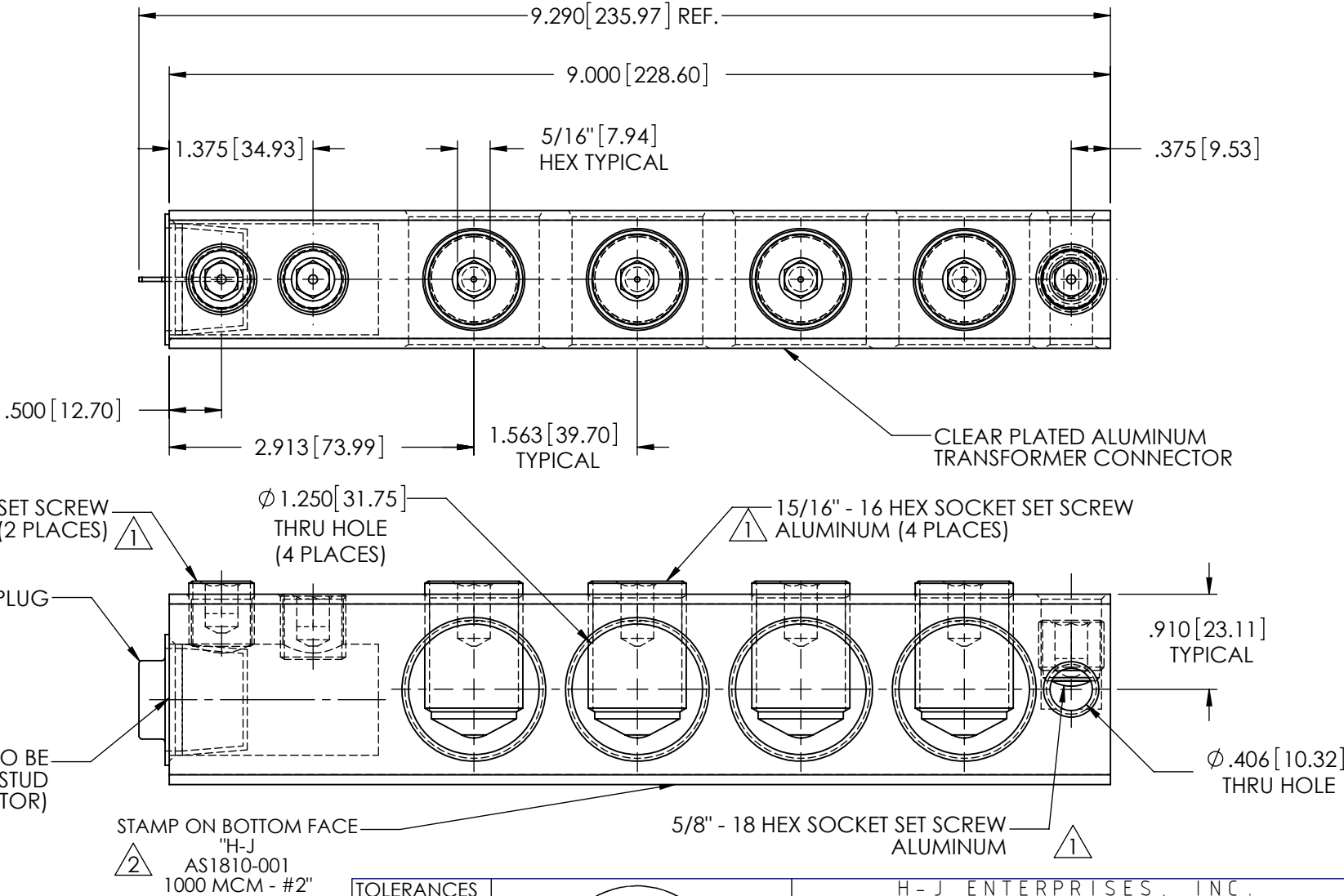
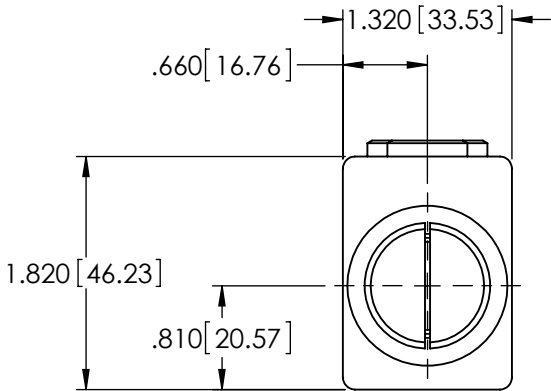
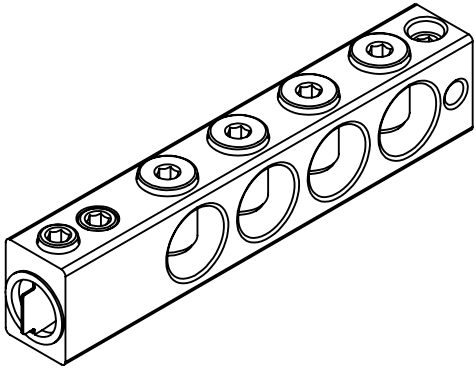


REVISIONS					
REV.	DATE	ECN #	DESCRIPTION	BY	APPROVED
1	12/19/2012	PQI# 1212003	REMOVED "ANODIZED" FROM SET SCREWS, WAS PRELIMINARY ASXXXX-100	CLS	PM
2	4/18/2013	HJ13-078	ADDED STAMP CALLOUT	CLS	AB



NOTES:
1. ALL DIMENSIONS ARE REFERENCE ONLY UNLESS OTHERWISE NOTED.
2. CONDUCTOR RANGE: 1000 MCM - #2
3. MEETS ANSI C119.4 CLASS A SPECIFICATIONS.

PROPRIETARY AND CONFIDENTIAL
THE INFORMATION CONTAINED IN THIS DRAWING IS THE SOLE PROPERTY OF H-J ENTERPRISES, INC. ANY REPRODUCTION IN PART OR AS A WHOLE WITHOUT THE WRITTEN PERMISSION OF H-J ENTERPRISES, INC. IS PROHIBITED.

TOLERANCES (EXCEPT AS NOTED)	
DECIMAL	+/-
FRACTIONAL	+/-
ANGULAR	+/-



H - J ENTERPRISES, INC. 3010 HIGH RIDGE BLVD. HIGH RIDGE, MO. 63049 USA PHONE 1-636-677-3421 FAX 1-636-376-1915			
TRANSFORMER CONNECTOR ASSEMBLY			
MATERIAL	(SEE DRAWING)		
CHK'D	CJT	APP'D 04/18/13	DRAWING NO.
		SCALE N.T.S.	AS1810-001

DRAWN BY JH DATE 10/20/2009