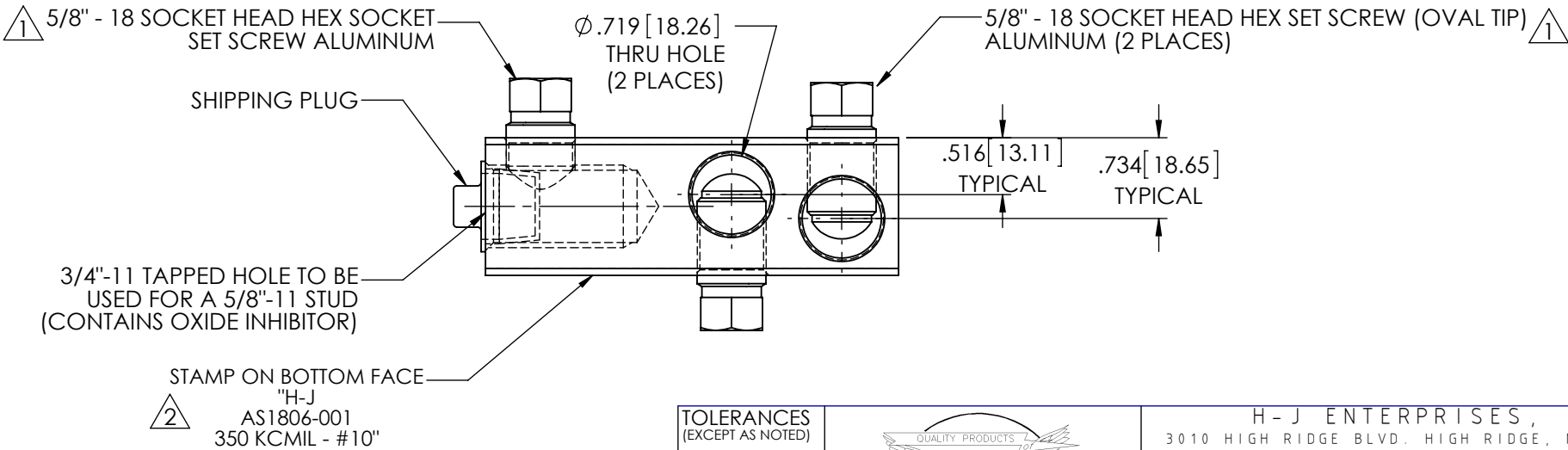
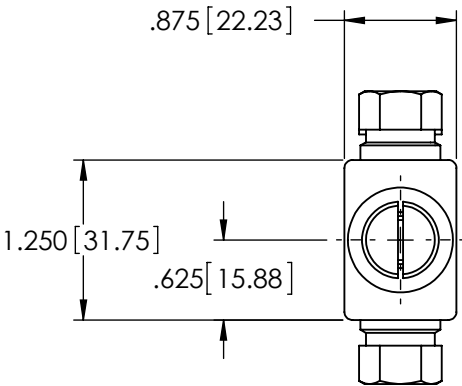
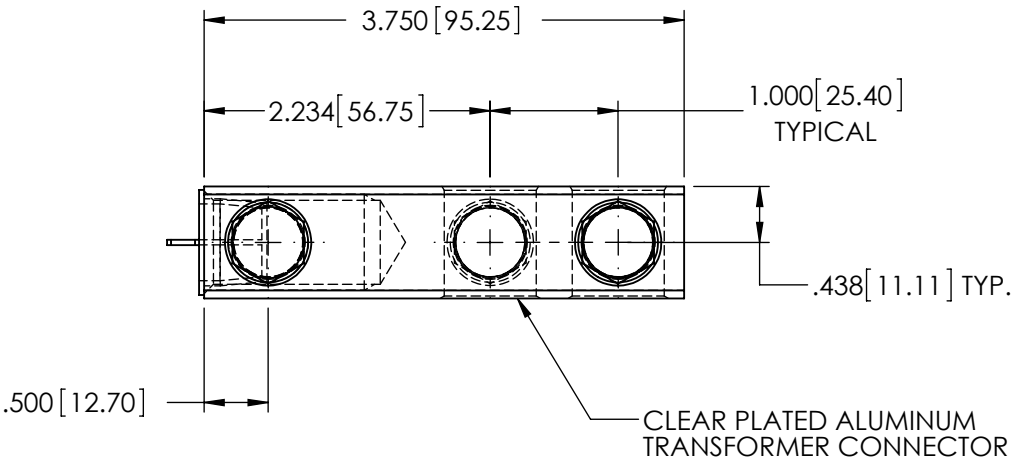
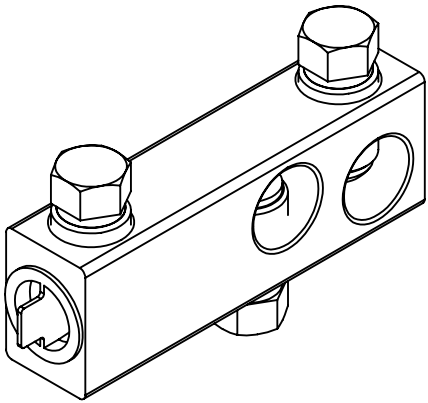


| REVISIONS | | | | | |
|-----------|------------|-------------|-------------------------------|-----|----------|
| REV. | DATE | ECN # | DESCRIPTION | BY | APPROVED |
| 1 | 11/12/2012 | PQIE1111003 | REMOVED ANODIZED FROM SCREWS. | CJT | PM |
| 2 | 4/18/2013 | HJ13-078 | ADDED STAMP CALLOUT | CLS | AB |



- NOTES:
1. ALL DIMENSIONS ARE REFERENCE ONLY UNLESS OTHERWISE NOTED.
 2. CONDUCTOR RANGE: 350 KCMIL - #10
 3. MEETS ANSI C119.4 CLASS A SPECIFICATIONS.

PROPRIETARY AND CONFIDENTIAL

THE INFORMATION CONTAINED IN THIS DRAWING IS THE SOLE PROPERTY OF H-J ENTERPRISES, INC. ANY REPRODUCTION IN PART OR AS A WHOLE WITHOUT THE WRITTEN PERMISSION OF H-J ENTERPRISES, INC. IS PROHIBITED.

| TOLERANCES (EXCEPT AS NOTED) | |
|---------------------------------|--|
| DECIMAL | |
| +/- | |
| FRACTIONAL | |
| +/- | |
| ANGULAR | |
| +/- | |



| | | | |
|---|----------------|--------------|------------|
| H - J ENTERPRISES, INC. | | | |
| 3010 HIGH RIDGE BLVD. HIGH RIDGE, MO. 63049 USA | | | |
| PHONE 1-636-677-3421 FAX 1-636-376-1915 | | | |
| TRANSFORMER CONNECTOR ASSEMBLY FOR 250MCM | | | |
| MATERIAL (SEE DRAWING) | | | |
| CHK'D CJT | APP'D 04/18/13 | DRAWING NO. | |
| DRAWN BY JH | DATE 8/24/2012 | SCALE N.T.S. | AS1806-001 |