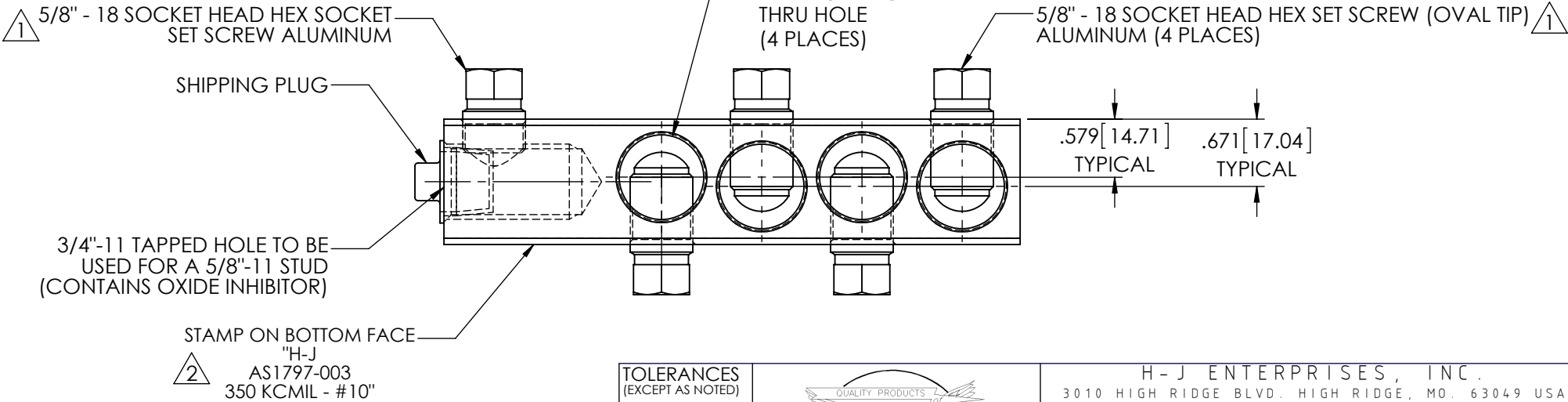
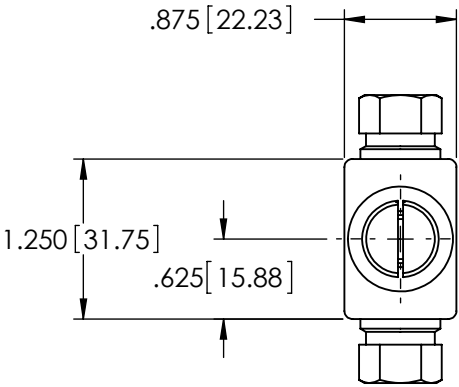
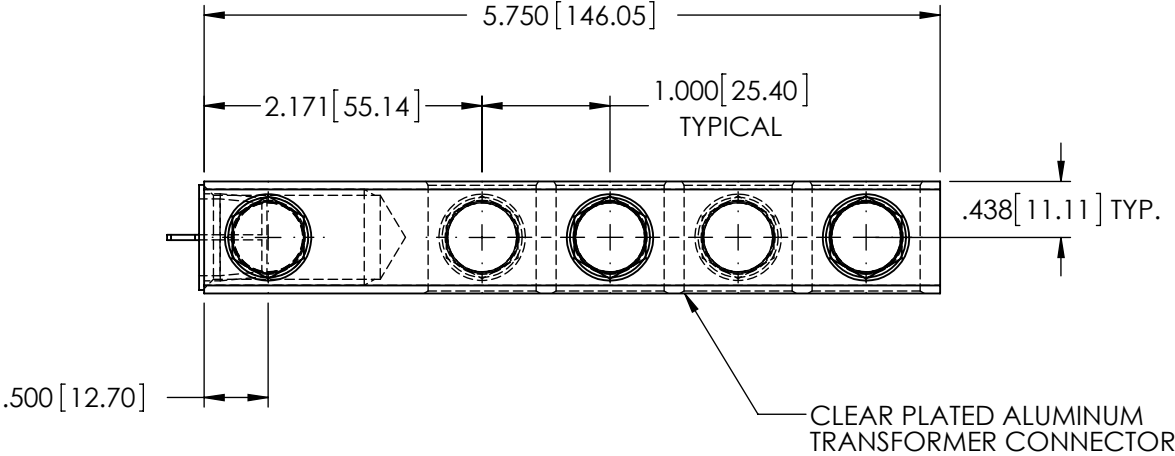
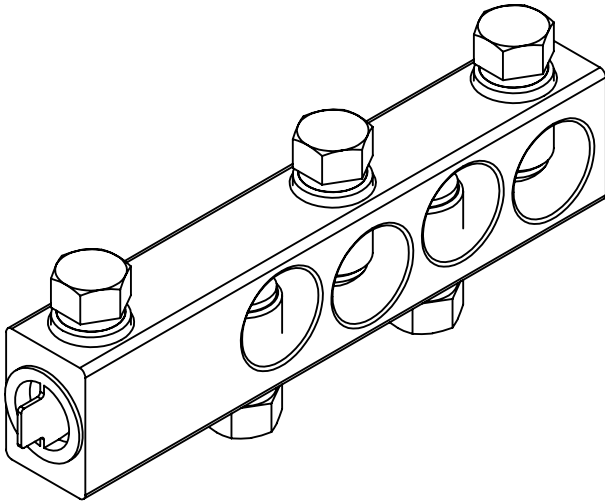


REVISIONS					
REV.	DATE	ECN #	DESCRIPTION	BY	APPROVED
1	11/12/2012	PQIE1111003	REMOVED ANODIZED FROM SCREWS.	CJT	PM
2	4/18/2013	HJ13-078	ADDED STAMP CALLOUT	CLS	AB



- NOTES:
1. ALL DIMENSIONS ARE REFERENCE ONLY UNLESS OTHERWISE NOTED.
 2. CONDUCTOR RANGE: 350 KCMIL - #10
 3. MEETS ANSI C119.4 CLASS A SPECIFICATIONS.

PROPRIETARY AND CONFIDENTIAL

THE INFORMATION CONTAINED IN THIS DRAWING IS THE SOLE PROPERTY OF H-J ENTERPRISES, INC. ANY REPRODUCTION IN PART OR AS A WHOLE WITHOUT THE WRITTEN PERMISSION OF H-J ENTERPRISES, INC. IS PROHIBITED.

TOLERANCES (EXCEPT AS NOTED)	
DECIMAL	
+/-	
FRACTIONAL	
+/-	
ANGULAR	
+/-	



H - J ENTERPRISES, INC.			
3010 HIGH RIDGE BLVD. HIGH RIDGE, MO. 63049 USA			
PHONE 1-636-677-3421 FAX 1-636-376-1915			
TRANSFORMER CONNECTOR ASSEMBLY FOR 350 MCM			
MATERIAL SEE DRAWING			
CHK'D	CJT	APP'D 04/18/13	DRAWING NO. AS1797-003
0/18/2012	SCALE	N.T.S.	

DRAWN BY CLS DATE 10/18/2012