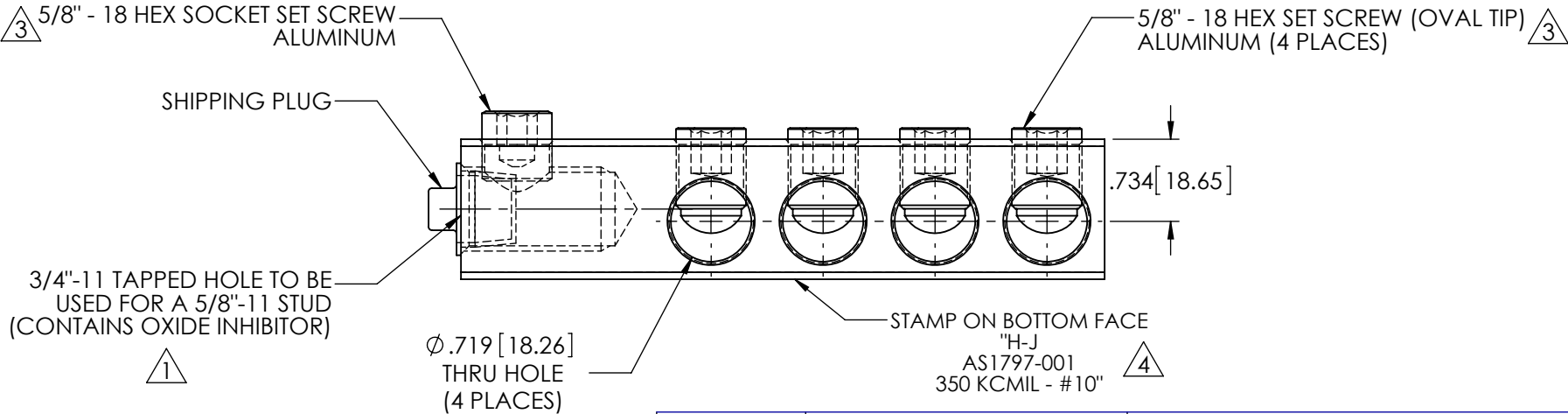
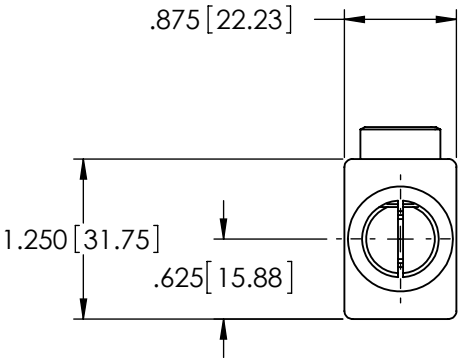
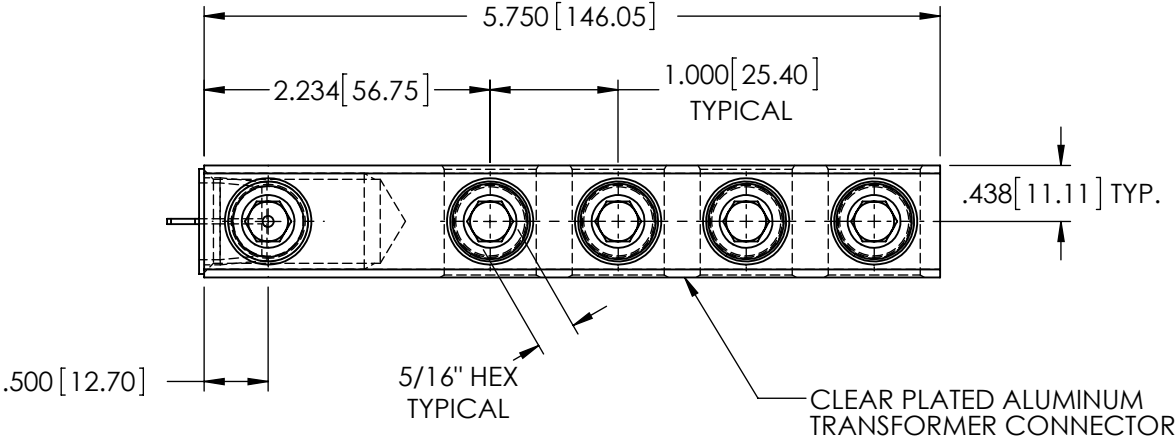


REVISIONS					
REV.	DATE	ECN #	DESCRIPTION	BY	APPROVED
1	11/10/2011	PREMINARY	ADDED -11 TO 3/4" TO THREAD CALLOUT	EDS	
2	12/22/2011		WAS ASXXXX-124	CJT	PM
3	11/12/2012	PQIE1111003	REMOVED ANODIZED FROM SCREWS.	CJT	PM
4	4/18/2013	HJ13-078	ADDED STAMP CALLOUT	CLS	AB



- NOTES:
1. ALL DIMENSIONS ARE REFERENCE ONLY UNLESS OTHERWISE NOTED.
  2. CONDUCTOR RANGE: 350 KCMIL - #10
  3. MEETS ANSI C119.4 CLASS A SPECIFICATIONS.

**PROPRIETARY AND CONFIDENTIAL**  
THE INFORMATION CONTAINED IN THIS  
DRAWING IS THE SOLE PROPERTY OF  
H-J ENTERPRISES, INC. ANY  
REPRODUCTION IN PART OR AS A WHOLE  
WITHOUT THE WRITTEN PERMISSION OF  
H-J ENTERPRISES, INC. IS  
PROHIBITED.

TOLERANCES  
(EXCEPT AS NOTED)

DECIMAL  
+/-  
FRACTIONAL  
+/-  
ANGULAR  
+/-



DRAWN BY JH

DATE

11/1/2011

SCALE

N.T.S.

H - J ENTERPRISES, INC.  
3010 HIGH RIDGE BLVD. HIGH RIDGE, MO. 63049 USA  
PHONE 1-636-677-3421 FAX 1-636-376-1915

**TRANSFORMER CONNECTOR ASSEMBLY**

MATERIAL (SEE DRAWING)

CHK'D CJT

APP'D 04/18/13

DRAWING NO.

AS1797-001