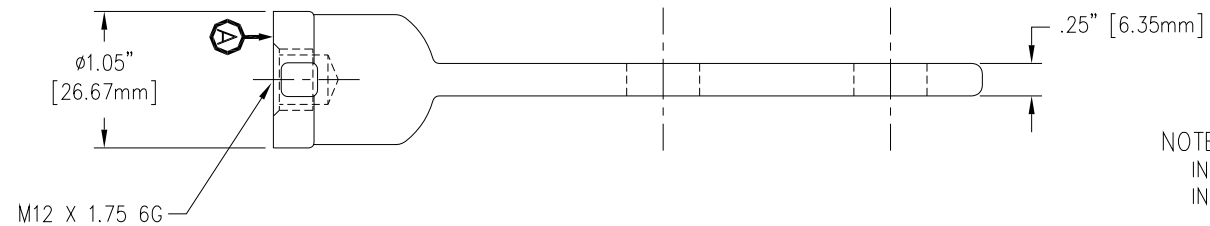
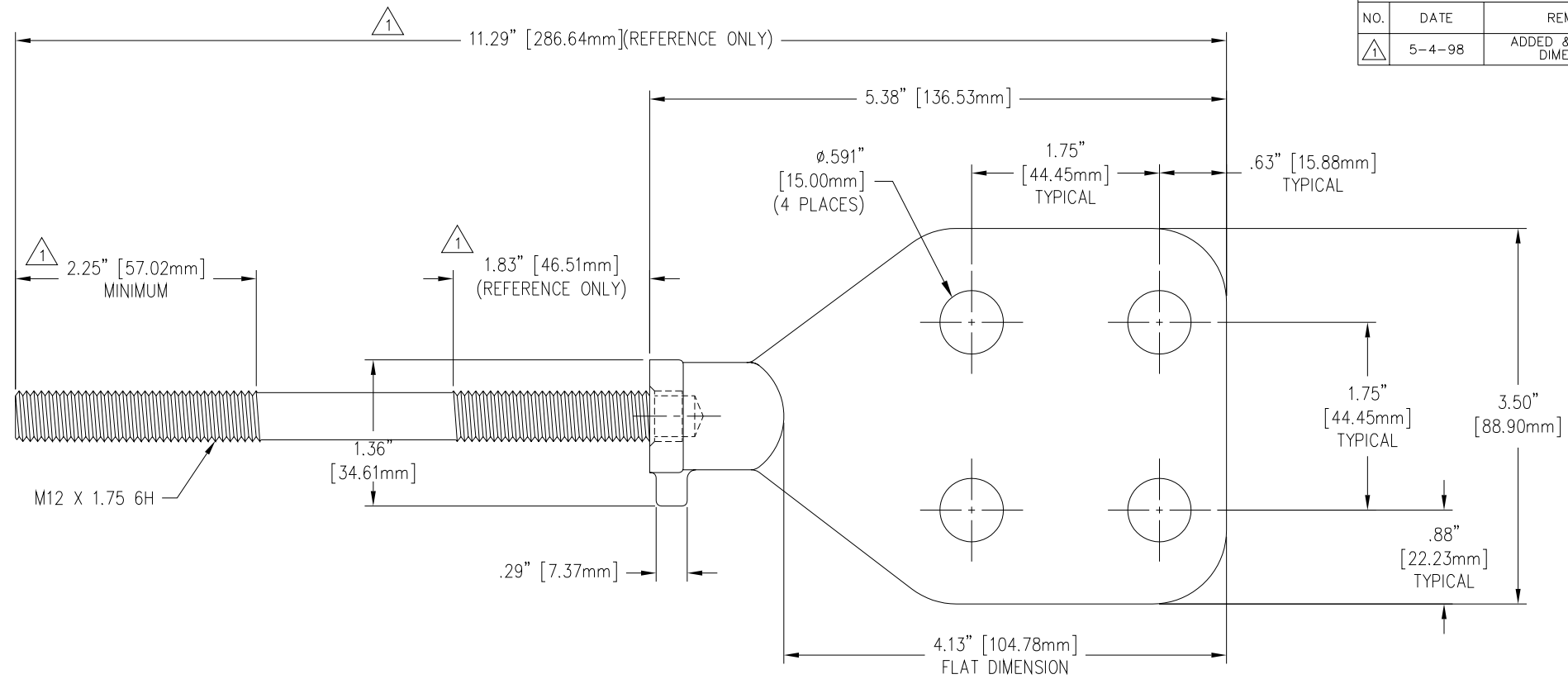


REVISIONS				
NO.	DATE	REMARKS	BY	APPD.
1	5-4-98	ADDED & ADJUSTED DIMENSIONS	CJT	LHE



NOTES:
 INCLUDES THREE EXTRA BRASS NUTS.
 INCLUDES THREE EXTRA BRASS WASHERS.

MATERIALS:
 STUD - COPPER CDA 110
 SPADE - CDA 844 TIN PLATED

NOTE:
 FULL THREAD FROM SURFACE 
 TO THE DEPTH SPECIFIED IN THE TAP NOTE.

TOLERANCES (EXCEPT AS NOTED)	
DECIMAL	± .032" / .8mm
FRACTIONAL	±
ANGULAR	± 2°



H-J ENTERPRISES, INC.
 3010 HIGH RIDGE BLVD. HIGH RIDGE, MO. 63049 USA
 PHONE 1-636-677-3421 FAX 1-636-376-1915

4 HOLE SPADE TERMINAL AND
 M12 X 1.75 STUD ASSEMBLY.

MATERIAL (SEE DRAWING)

CHK'D APP'D
 SCALE N.T.S.

DRAWING NO.

MAS0086-001

DRAWN BY
 BTD

DATE
 10-16-97