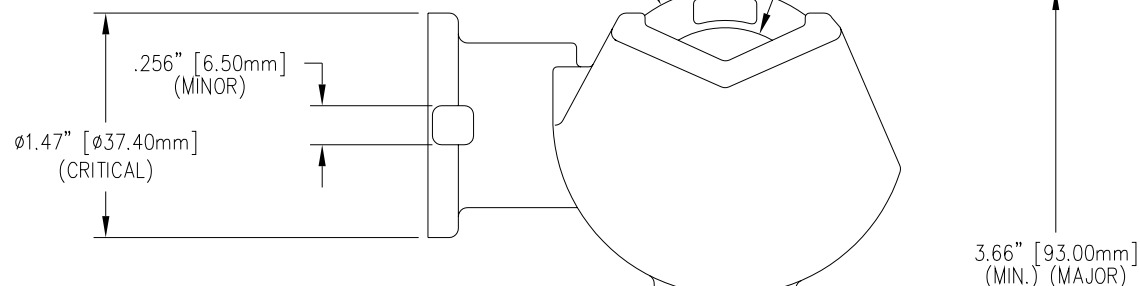


Ø OF STUD AND Ø OF MATING BASKET O/D TO BE CENTERED ±3/64". (MAJOR)



M12 SPLIT COIL LOCKWASHER - STAINLESS STEEL (MWA-0002-00)

M12 X 1.75 SILICON BRONZE OR BRASS NUT - TIN PLATED (MNT-0002-01)

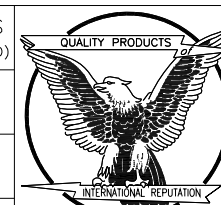
M12 X 1.75 THREAD (LAST THREAD DEFORMED) (CRITICAL)

REVISIONS					
NO.	DATE	ECN #	REMARKS	BY	APPD.
1	2-23-98		ADDED NOTE #2	BTD	LHE
2	4-21-98		ADDED NOTES (CRITICAL, MAJOR, MINOR) MODIFIED TITLE BLOCK FOR CELECO	TLH	JFS
3	5-20-99		REMOVED NOTE #2.	CJT	LHE
4	2-18-02	HJ01-231	REMOVED TORQUE NOTE.	CJT	LHE

NOTES:
1. STUD HAS BEEN REMOVED IN THIS VIEW FOR CLAIRITY.

MATERIAL:
STUD - COPPER CDA 110 (CRITICAL)
TERMINAL BODY - CDA 844 TIN PLATED (CRITICAL)
EYEBOLT - CDA 955 TIN PLATED (CRITICAL)

TOLERANCES (EXCEPT AS NOTED)	
DECIMAL	± .032" / .8mm
FRACTIONAL	±
ANGULAR	± 2°



H-J ENTERPRISES, INC.
3010 HIGH RIDGE BLVD. HIGH RIDGE, MO. 63049 USA
PHONE 1-636-677-3421 FAX 1-636-376-1915

METRIC M20 HARDWARE ASSEMBLY FOR CELECO

MATERIAL (SEE ABOVE)

CHK'D APP'D DRAWING NO.

DRAWN BY TLH

DATE 5-6-96

SCALE N.T.S.

MAS0023-002