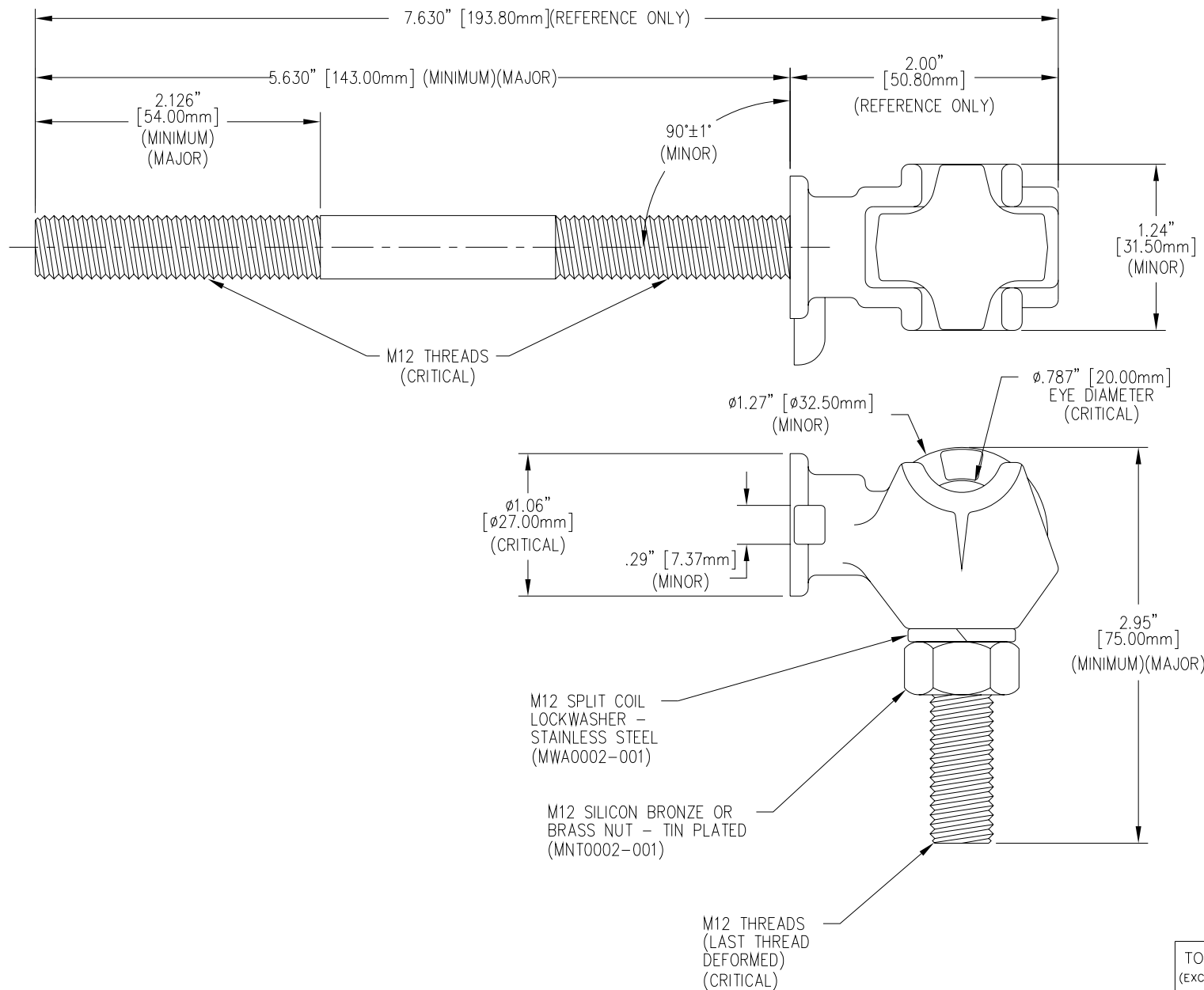


| REVISIONS | | | | |
|-----------|---------|---|-----|-------|
| NO. | DATE | REMARKS | BY | APPD. |
| △ | 8-13-98 | ADDED NOTES (CRITICAL, MAJOR, & MINOR) | CJT | LHE |



NOTE:
STUD HAS BEEN REMOVED
IN THIS VIEW FOR CLAIRITY.

- △ NOTES:
1. INCLUDES ONE EXTRA M12 BRASS NUT.
 2. INCLUDES TWO EXTRA M12 JAM NUTS.
 3. INCLUDES THREE EXTRA BRASS WASHERS.

MATERIAL:
STUD - COPPER CDA 110
TERMINAL BODY - CDA 844 TIN PLATED
EYEBOLT - CDA 955 TIN PLATED

| | |
|---------------------------------|----------------|
| TOLERANCES (EXCEPT AS NOTED) | |
| DECIMAL | ± .032" / .8mm |
| FRACTIONAL | ± |
| ANGULAR | ± 2° |



H-J ENTERPRISES, INC.
3010 HIGH RIDGE BLVD. HIGH RIDGE, MO. 63049 USA
PHONE 1-314-677-3421 FAX 1-314-376-1915

| | | |
|---------------------------------|-----------------|-----------------|
| METRIC M12 HARDWARE ASSEMBLY | | |
| MATERIAL (SEE ABOVE) | | |
| CHK'D | APP'D | DRAWING NO. |
| DRAWN BY CJT | DATE 5-19-98 | SCALE N.T.S. |
| MAS0022-003 | | |