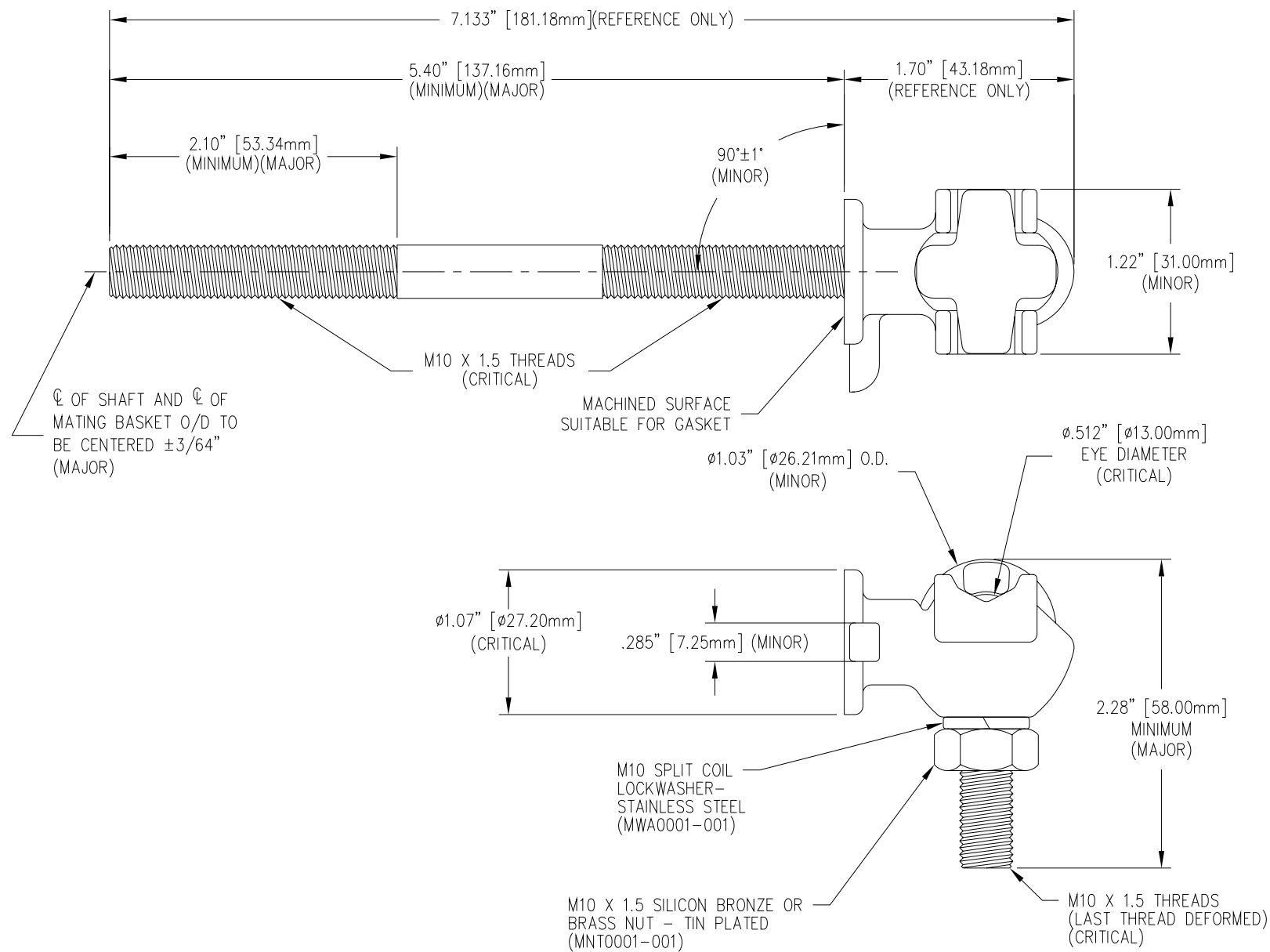


REVISIONS					
NO.	DATE	ECN #	REMARKS	BY	APPD.
1	2-18-02	HJ01-231	REMOVED TORQUE NOTE.	CJT	LHE



NOTES:

1. INCLUDES ONE EXTRA M10 BRASS NUT.
2. INCLUDES TWO EXTRA M10 JAM NUTS.
3. INCLUDES THREE EXTRA BRASS WASHERS.

MATERIAL:

STUD - COPPER CDA 110 (CRITICAL)
 TERMINAL BODY - CDA 844 TIN PLATED (CRITICAL)
 EYEBOLT - CDA 955 TIN PLATED (CRITICAL)

NOTE:
 STUD HAS BEEN REMOVED
 IN THIS VIEW FOR CLAIRITY.

TOLERANCES (EXCEPT AS NOTED)	
DECIMAL	± .032" / .8mm
FRACTIONAL	±
ANGULAR	± 2°



H-J ENTERPRISES, INC.
 3010 HIGH RIDGE BLVD. HIGH RIDGE, MO. 63049 USA
 PHONE 1-636-677-3421 FAX 1-636-376-1915

METRIC M10
 HARDWARE ASSEMBLY

MATERIAL
 (SEE ABOVE)

CHK'D APP'D
 SCALE N.T.S.

DRAWING NO.
MAS0021-003

DRAWN BY CJT DATE 5-19-98