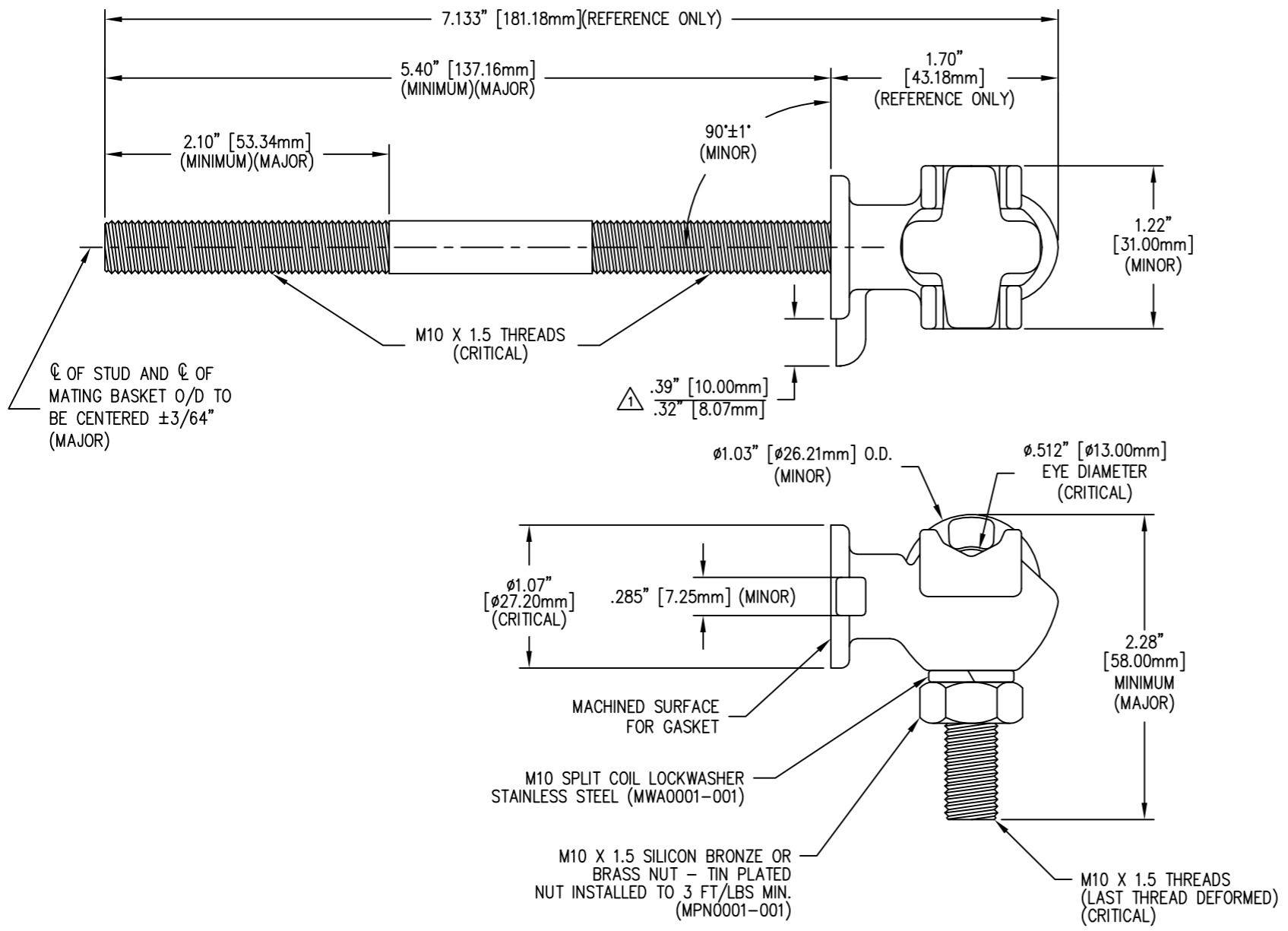


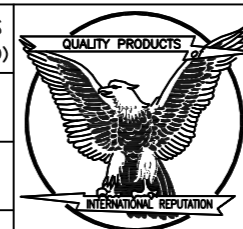
REVISIONS					
NO.	DATE	ECN #	REMARKS	BY	APPD.
1	5-18-06	HJ06-054	ADDED PART # & DIM.	CJT	JM



△ NOTE:  
1. CELECO PART NUMBER: A969

MATERIAL:  
STUD - COPPER CDA 11000 (CRITICAL)  
TERMINAL BODY - CDA 84400 TIN PLATED (CRITICAL)  
EYEBOLT - CDA 95500 TIN PLATED (CRITICAL)

TOLERANCES (EXCEPT AS NOTED)	
DECIMAL	± .032" / .8mm
FRACTIONAL	±
ANGULAR	± 2°



**H-J ENTERPRISES, INC.**  
3010 HIGH RIDGE BLVD. HIGH RIDGE, MO. 63049 USA  
PHONE 1-636-677-3421 FAX 1-636-376-1915

METRIC M10 HARDWARE ASSEMBLY FOR CELECO

MATERIAL SEE DRAWING

CHK'D APP'D DRAWING NO. MAS0021-002

SCALE N.T.S.

DRAWN BY TLH DATE 5-6-96