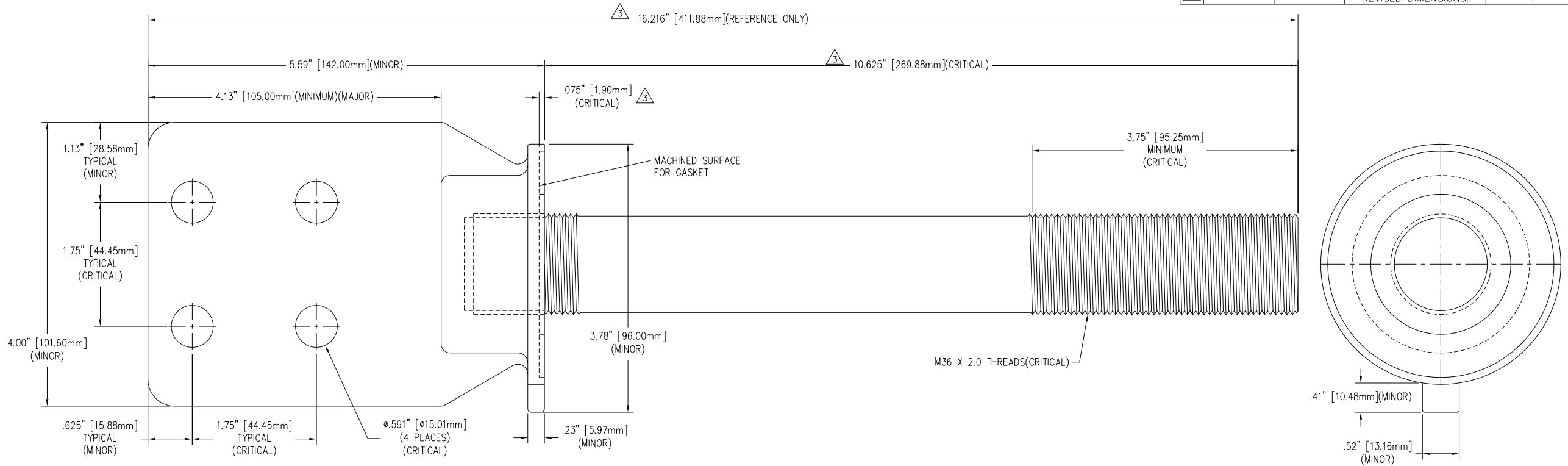


REVISIONS

NO.	DATE	ECN #	REMARKS	BY	APPD.
1	11-14-97		PRINT REDRAWN.	BTD	LHE
2	4-15-98		ADDED NOTES: (CRITICAL, MAJOR, MINOR) MODIFIED THE TITLE BLOCK FOR CELECO.	TLH	JFS
3	5-21-03	HJ03-056	ADDED BOSS AND REVISED DIMENSIONS.	CJT	SP



NOTES:

1. INCLUDES THREE EXTRA BRASS NUTS. (MNT-0006-01)
2. INCLUDES THREE EXTRA BRASS WASHERS. (MWA-0006-01)

MATERIAL:

- STUD - COPPER CDA 11000 (CRITICAL)
- SPADE - CDA 84400 TIN PLATED (CRITICAL)

TOLERANCES
(EXCEPT AS NOTED)

DECIMAL
± .04"/1mm

FRACTIONAL
±

ANGULAR
± 2°



H-J ENTERPRISES, INC.
3010 HIGH RIDGE BLVD. HIGH RIDGE, MO. 63049 USA
PHONE 1-636-677-3421 FAX 1-636-376-1915

METRIC ASSEMBLY FOR CELECO
4 HOLE SPADE/M36 X 2 STUD

MATERIAL (SEE DRAWING)

CHK'D APP'D DRAWING NO.
DRAWN BY TLH DATE 4-6-96 SCALE N.T.S. MAS0006-001