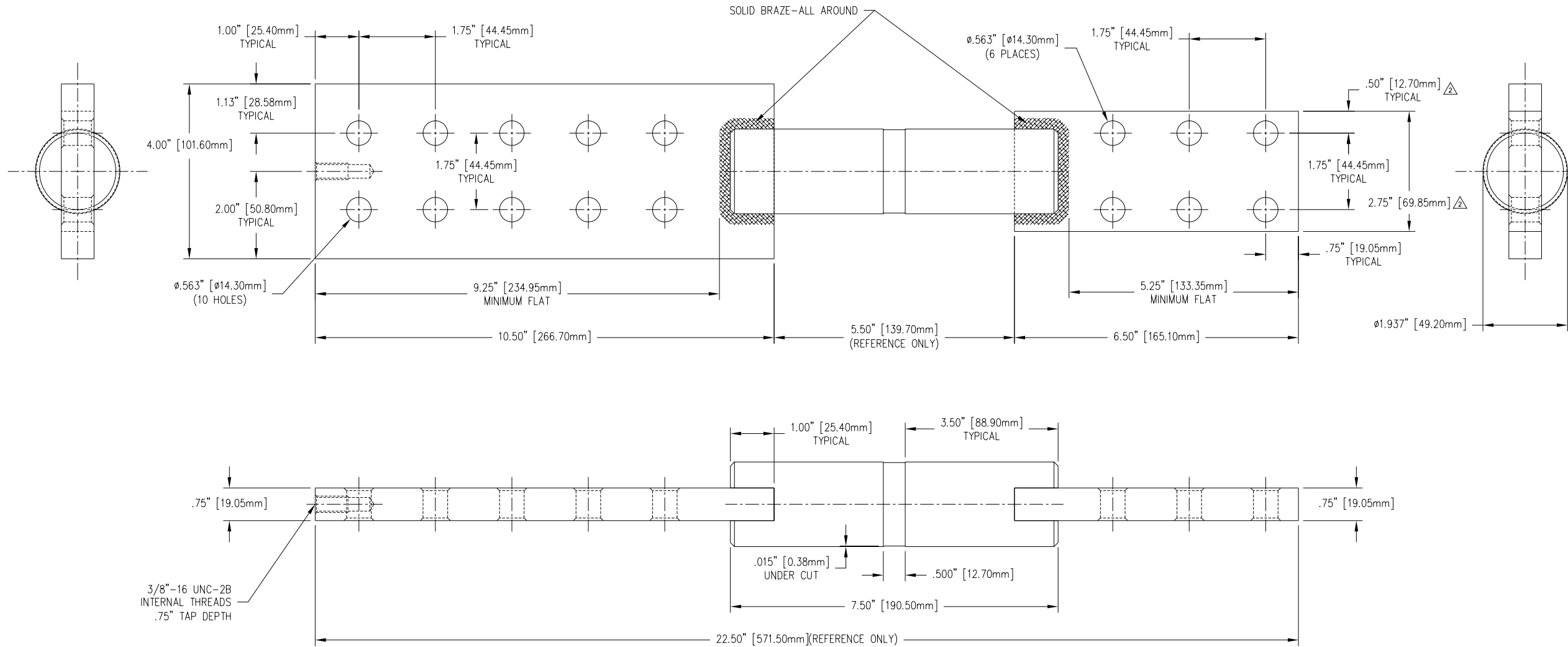


REVISIONS				
NO.	DATE	REMARKS	BY	APPD.
△	12-9-99	REMOVED PLATING DIMENSIONS.	CJT	LHE
△	1-5-00	EDITED DIMENSIONS.	CJT	LHE



TOLERANCES (EXCEPT AS NOTED)	DECIMAL	H-J ENTERPRISES, INC.		
	± .032" / .8mm	3010 HIGH RIDGE BLVD. HIGH RIDGE, MO. 63049 USA PHONE 1-636-677-3421 FAX 1-636-376-1915		
FRACTIONAL	±	FABRICATED STUD AND SPADE ASSEMBLY		
ANGULAR	± 2°	MATERIAL	COPPER CDA 110 TIN PLATED	DRAWING NO.
		CHK'D	APP'D	FS8006-001
		DRAWN BY	DATE	SCALE
		CJT	12-2-99	N.T.S.