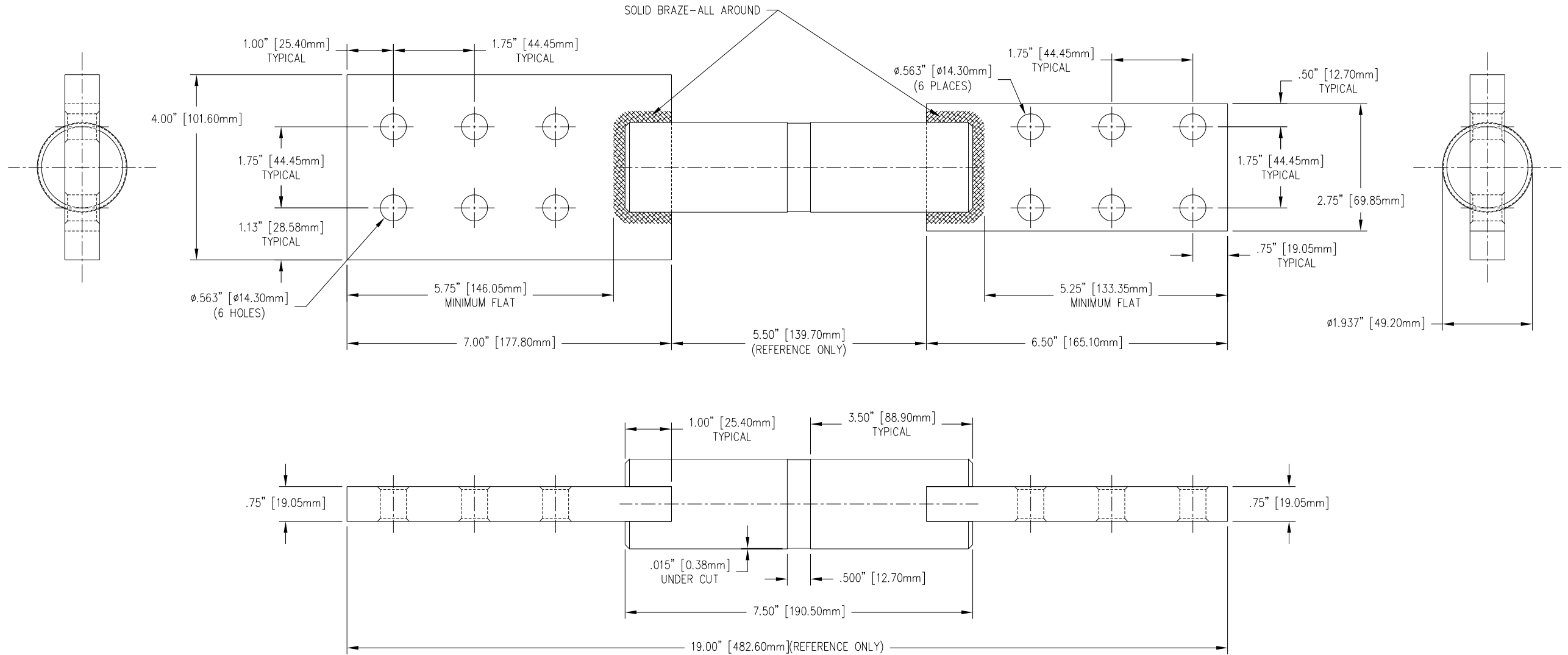


REVISIONS				
NO.	DATE	REMARKS	BY	APPD.



TOLERANCES (EXCEPT AS NOTED)	
DECIMAL	± .032" / .8mm
FRACTIONAL	±
ANGULAR	± 2'



H-J ENTERPRISES, INC. 3010 HIGH RIDGE BLVD. HIGH RIDGE, MO. 63049 USA PHONE 1-636-677-3421 FAX 1-636-376-1915	
FABRICATED STUD AND SPADE ASSEMBLY	
MATERIAL	COPPER CDA 110
CHK'D	APP'D
DRAWN BY	DATE
CJT	6-15-00
SCALE	N.T.S.
DRAWING NO. FS8005-002	