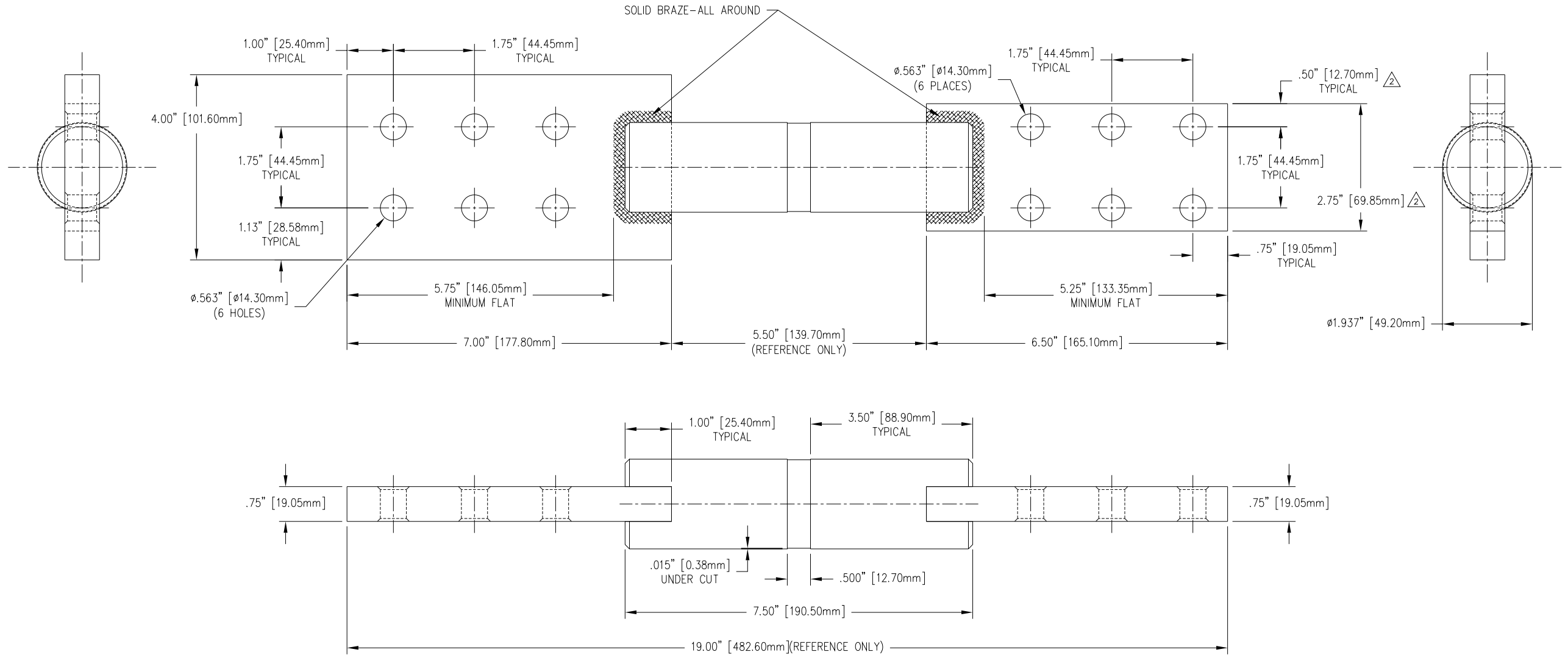


REVISIONS				
NO.	DATE	REMARKS	BY	APPD.
1	12-9-99	REMOVED PLATING DIMENSIONS.	CJT	LHE
2	1-5-00	EDITED DIMENSIONS.	CJT	LHE



TOLERANCES (EXCEPT AS NOTED)	
DECIMAL	± .032" / .8mm
FRACTIONAL	±
ANGULAR	± 2'



H-J ENTERPRISES, INC. 3010 HIGH RIDGE BLVD. HIGH RIDGE, MO. 63049 USA PHONE 1-636-677-3421 FAX 1-636-376-1915	
FABRICATED STUD AND SPADE ASSEMBLY	
MATERIAL	COPPER CDA 110 TIN PLATED
CHK'D	APP'D
DRAWN BY	DATE
SCALE	DRAWING NO.
12-1-99	FS8005-001