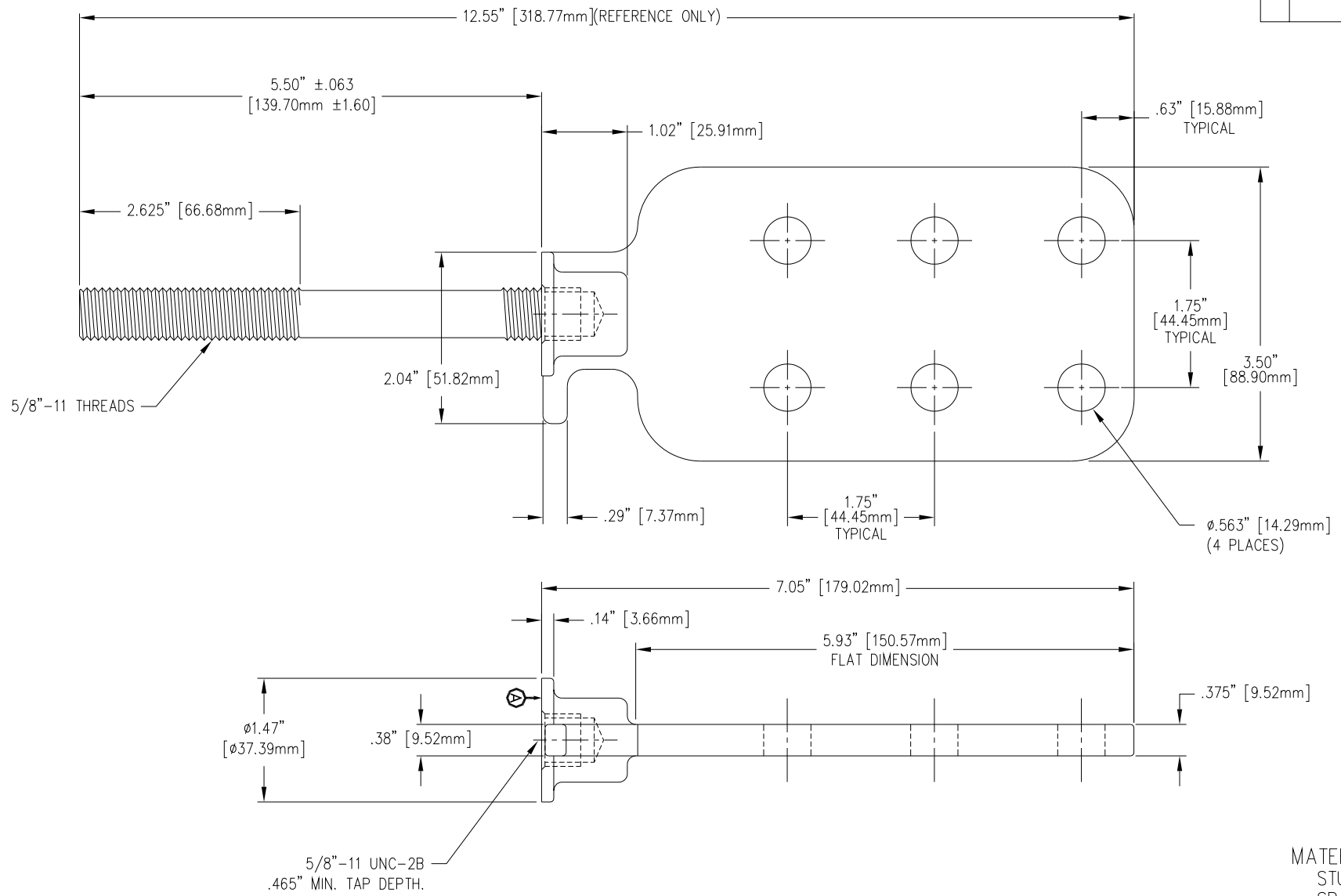


REVISIONS				
NO.	DATE	REMARKS	BY	APPD.



MATERIAL:  
STUD - COPPER CDA 110  
SPADE - CDA 844 TIN PLATED

NOTE:  
BOTTOM VIEW SHOWN  
WITHOUT STUD FOR DETAIL.

NOTE:  
FULL THREAD FROM SURFACE TO THE DEPTH SPECIFIED IN THE TAP NOTE.



<b>TOLERANCES</b> (EXCEPT AS NOTED) DECIMAL ± .032" / .8mm FRACTIONAL ± ANGULAR ± 2°		<b>H-J ENTERPRISES, INC.</b> 3010 HIGH RIDGE BLVD. HIGH RIDGE, MO. 63049 USA PHONE 1-636-677-3421 FAX 1-636-376-1915	
		6 HOLE SPADE WITH 5/8" - 11 X 6.125" STUD	
		MATERIAL (SEE DRAWING)	CHK'D APP'D
DRAWN BY CJT	DATE 11-5-99	SCALE N.T.S.	