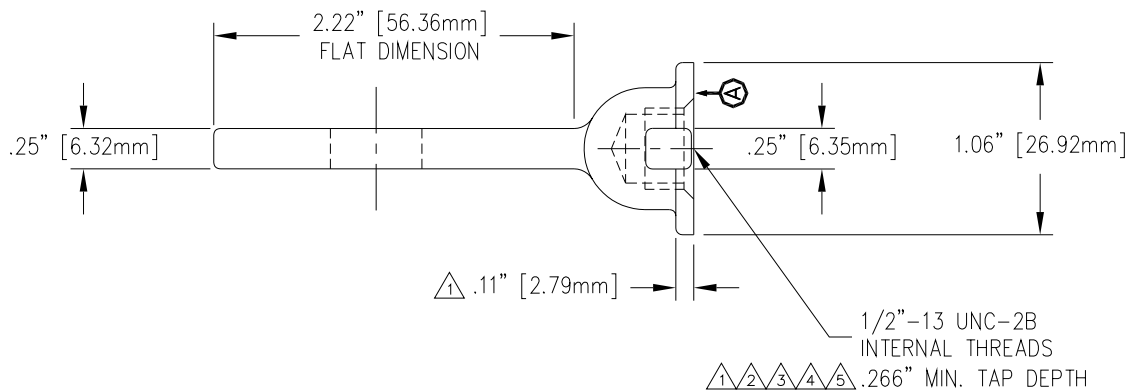
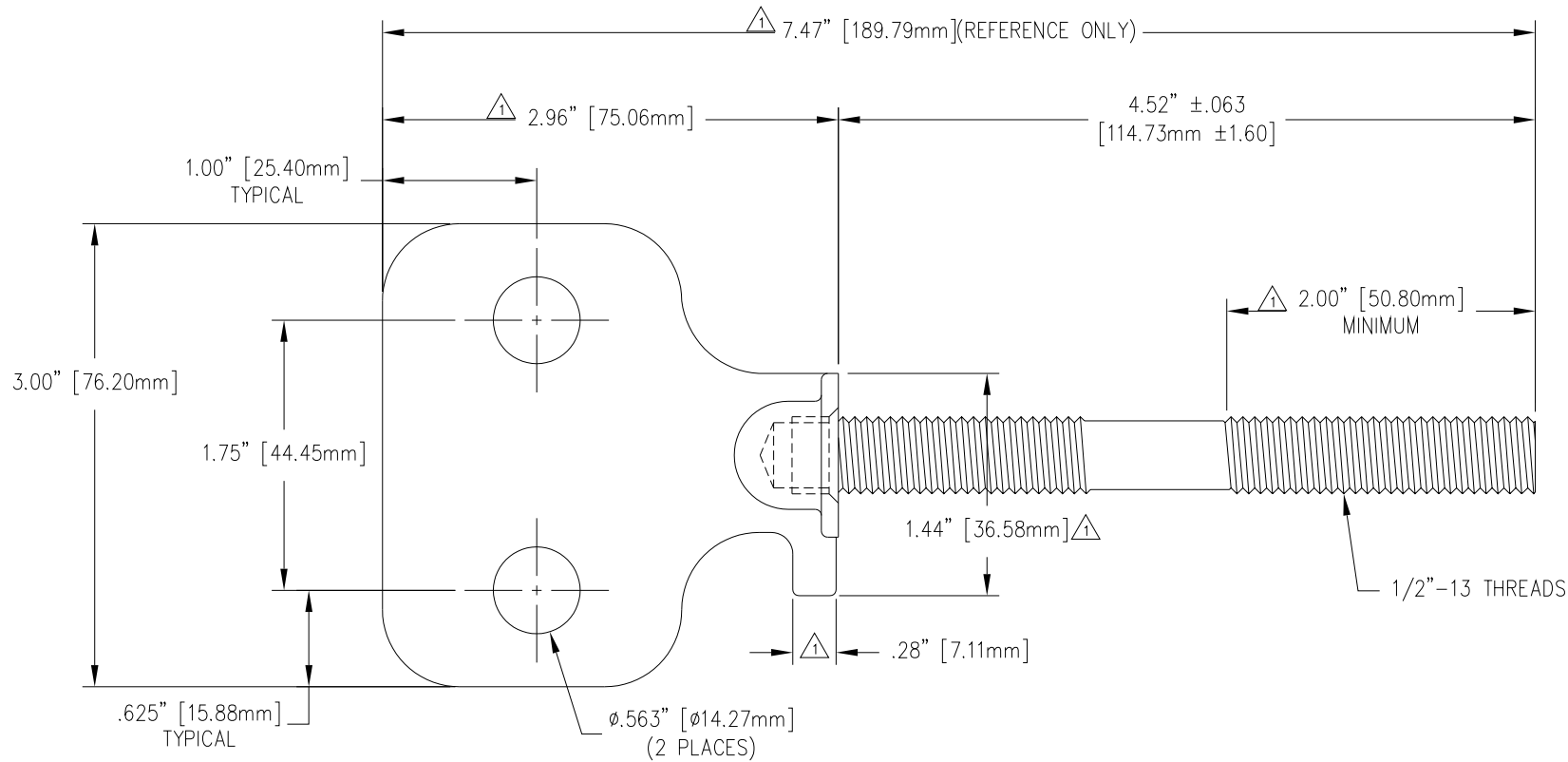


REVISIONS

| NO. | DATE     | ECN #    | REMARKS                                    | BY  | APPD. |
|-----|----------|----------|--|-----|-------|
| 1   | 10-11-99 |          | EDITED & ADDED DIMS.<br>CHANGED TAP DEPTH. | CJT | LHE   |
| 2   | 11-16-99 |          | CHANGED TAP DEPTH.                         | CJT | LHE   |
| 3   | 1-18-00  |          | CHANGED TAP DEPTH.                         | CJT | LHE   |
| 4   | 2-19-01  | HJ01-033 | CHANGED TAP DEPTH.                         | CJT | LHE   |
| 5   | 2-11-03  | HJ03-006 | CHANGED TAP: .300" TO .266"                | CJT | SP    |



MATERIAL:  
 STUD - COPPER CDA 11000 TIN PLATED  
 SPADE - ALUMINUM TENZALLOY TIN PLATED

NOTE:  
 BOTTOM VIEW SHOWN WITHOUT  
 STUD FOR DIMENSIONING.

NOTE:  
 FULL THREAD FROM SURFACE  
 TO THE DEPTH SPECIFIED IN THE TAP NOTE.



|                                 |                     |                           |  |  |                 |
|---------------------------------|---------------------|---------------------------|--|--|-----------------|
| TOLERANCES<br>(EXCEPT AS NOTED) |                     |                           |  | <b>H-J ENTERPRISES, INC.</b><br>3010 HIGH RIDGE BLVD. HIGH RIDGE, MO. 63049 USA<br>PHONE 1-636-677-3421 FAX 1-636-376-1915 |                 |
| DECIMAL                         | $\pm .032$ " / .8mm |                           |  | 50 KVA SPADE & STUD<br>HARDWARE ASSEMBLY   |                 |
| FRACTIONAL                      | $\pm$               | MATERIAL<br>(SEE ABOVE)   |  | CHK'D  | APP'D           |
| ANGULAR                         | $\pm 2^\circ$       | DRAWING NO.<br>AS1041-005 |  | DRAWN BY<br>CJT  | DATE<br>1-26-99 |
|                                 |                     |                           |  | SCALE<br>N.T.S.  |                 |