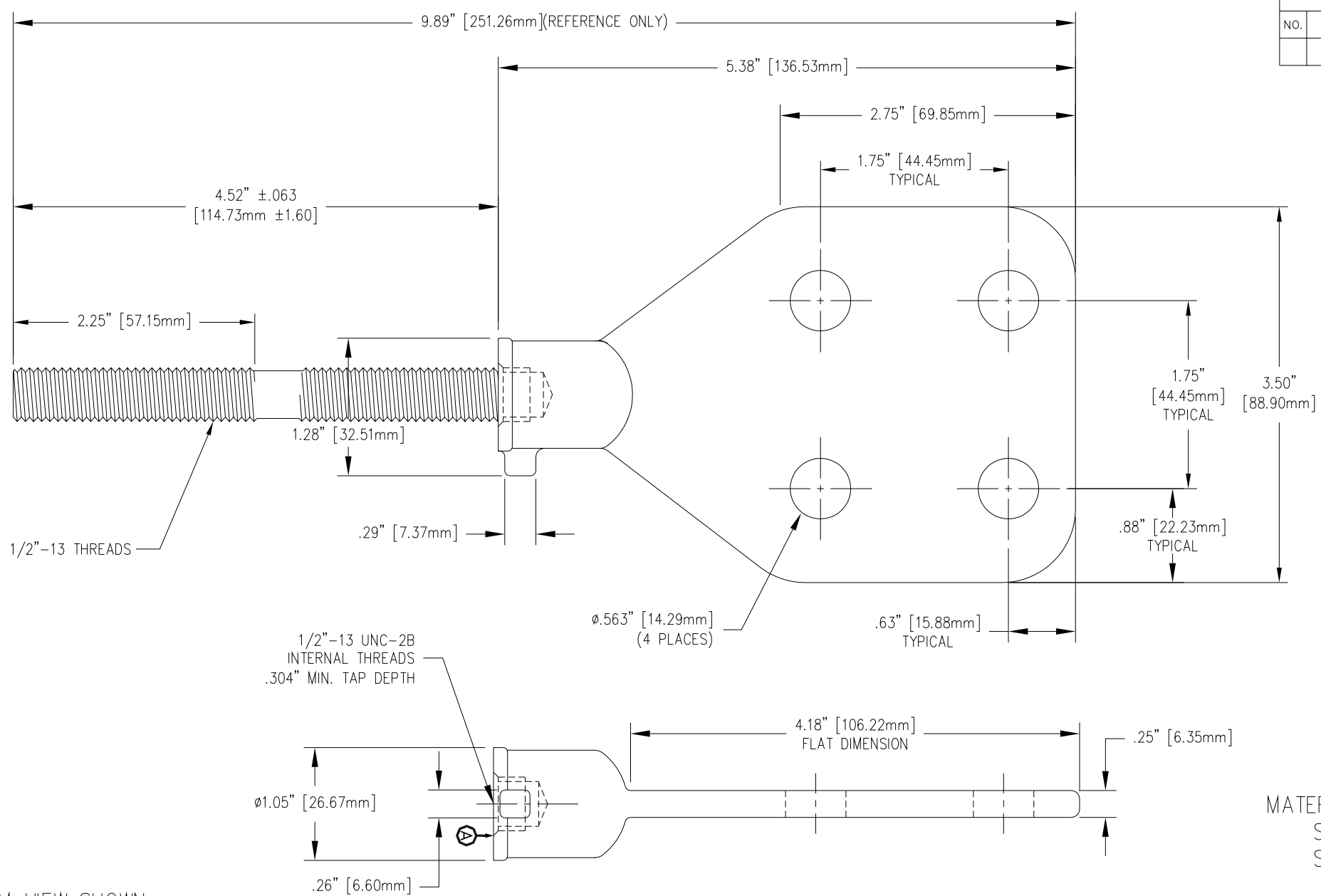


REVISIONS				
NO.	DATE	REMARKS	BY	APPD.



1/2"-13 UNC-2B  
INTERNAL THREADS  
.304" MIN. TAP DEPTH

MATERIAL:  
STUD - COPPER CDA 110  
SPADE - CDA 844 TIN PLATED

NOTE:  
BOTTOM VIEW SHOWN  
WITHOUT STUD FOR DETAIL.

NOTE:  
FULL THREAD FROM SURFACE   
TO THE DEPTH SPECIFIED IN THE TAP NOTE.

TOLERANCES (EXCEPT AS NOTED)	
DECIMAL	± .032" / .8mm
FRACTIONAL	±
ANGULAR	± 2°



**H-J ENTERPRISES, INC.**  
3010 HIGH RIDGE BLVD. HIGH RIDGE, MO. 63049 USA  
PHONE 1-636-677-3421 FAX 1-636-376-1915

50 KVA SPADE & STUD  
HARDWARE ASSEMBLY

MATERIAL (SEE ABOVE)		DRAWING NO. AS1023-009	
CHK'D	APP'D	SCALE N.T.S.	
DRAWN BY CJT		DATE 10-14-99	