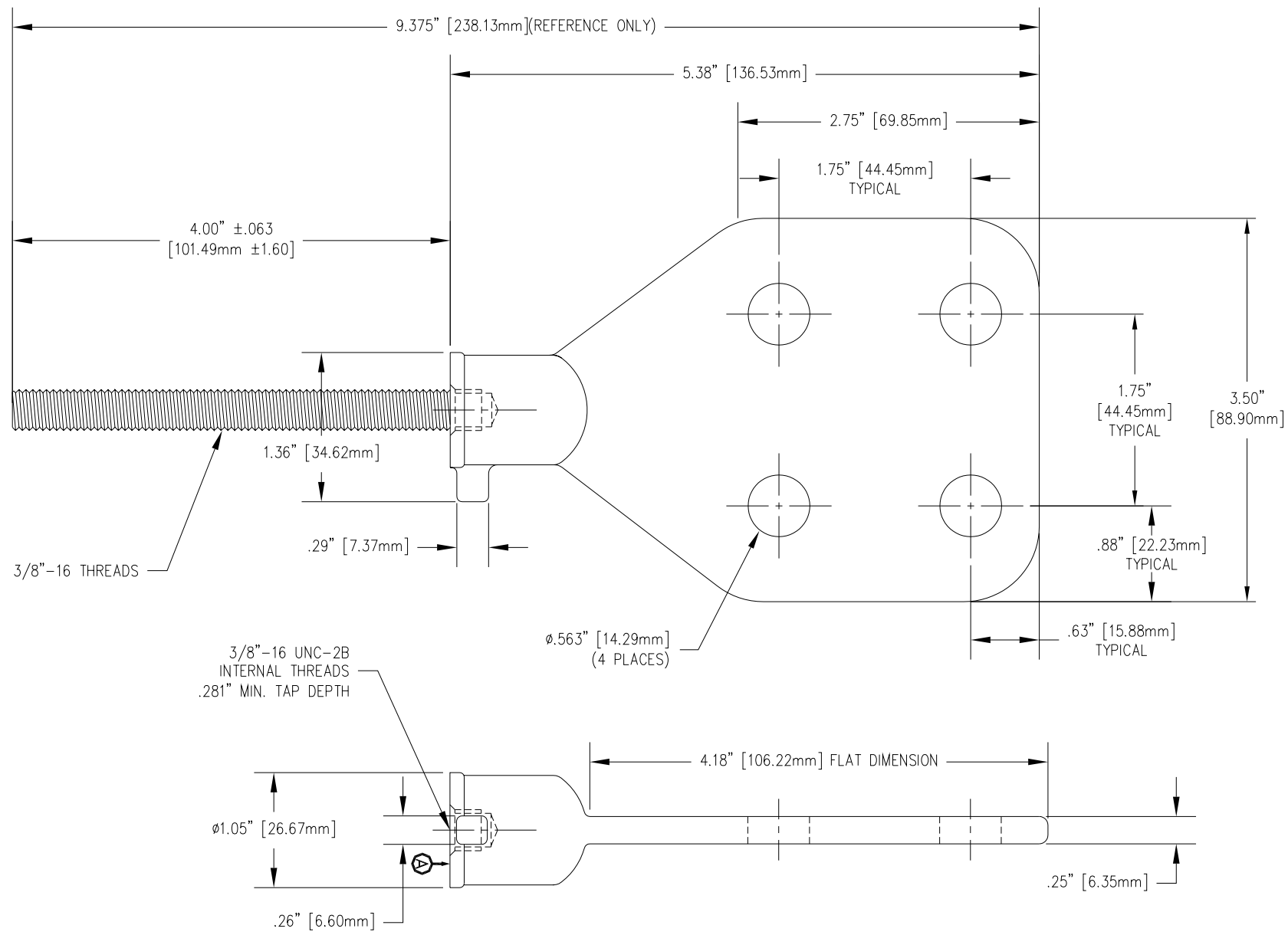



REVISIONS				
NO.	DATE	REMARKS	BY	APPD.



MATERIAL:  
 STUD - COPPER CDA 110  
 SPADE - CDA 844 TIN PLATED

NOTE:  
 BOTTOM VIEW SHOWN  
 WITHOUT STUD FOR DETAIL.

NOTE:  
 FULL THREAD FROM SURFACE   
 TO THE DEPTH SPECIFIED IN THE TAP NOTE.

TOLERANCES (EXCEPT AS NOTED)		<b>H-J ENTERPRISES, INC.</b> 3010 HIGH RIDGE BLVD. HIGH RIDGE, MO. 63049 USA PHONE 1-636-677-3421 FAX 1-636-376-1915		
		25 KVA SPADE & STUD ASSEMBLY		
DECIMAL ± .032" / .8mm		MATERIAL (SEE ABOVE)		
FRACTIONAL ±		CHK'D	APP'D	
ANGULAR ± 2°		DRAWN BY CJT	DATE 7-26-99	
		SCALE N.T.S.	DRAWING NO. AS1023-003	