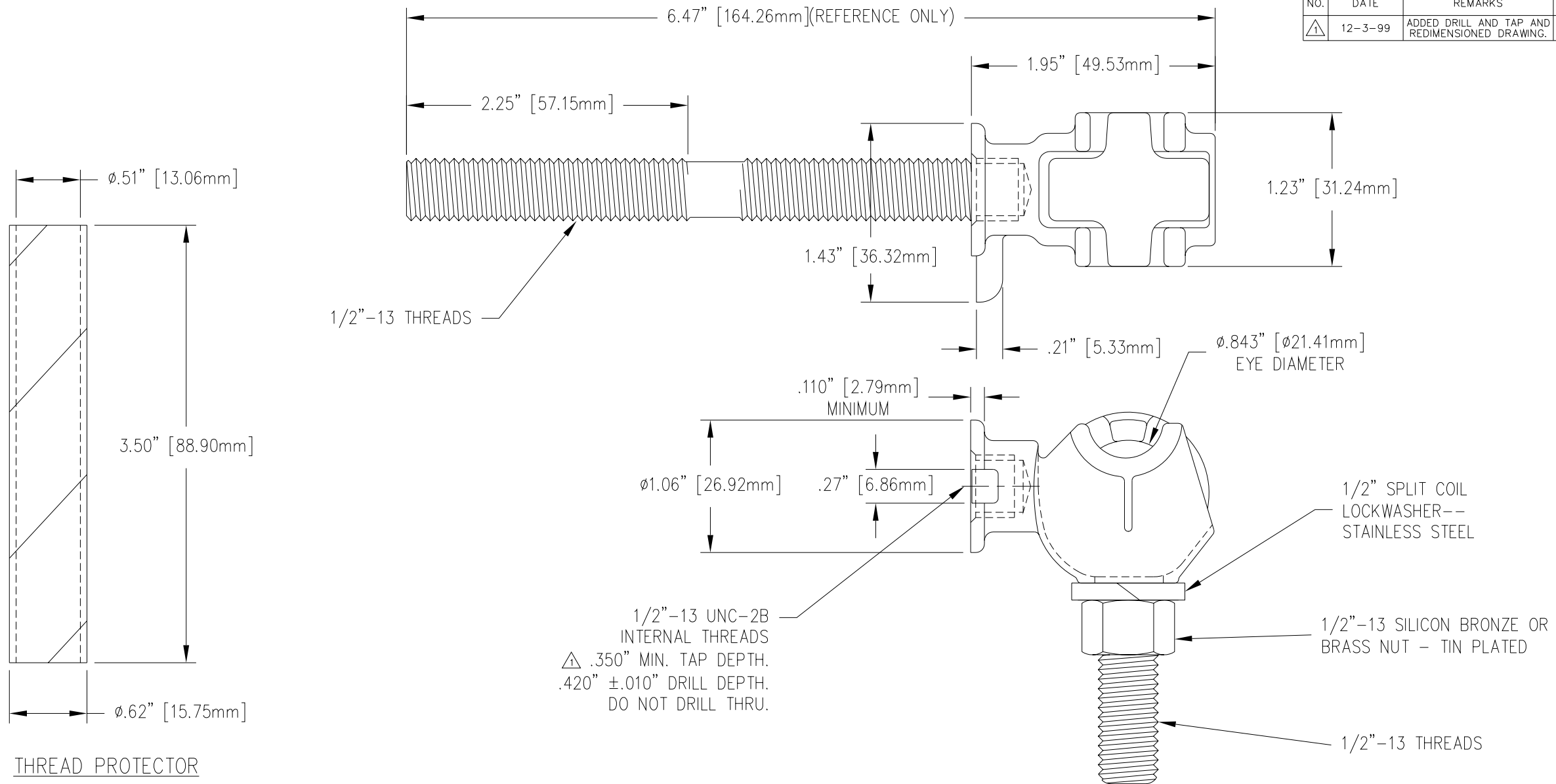



REVISIONS				
NO.	DATE	REMARKS	BY	APPD.
△	12-3-99	ADDED DRILL AND TAP AND REDIMENSIONED DRAWING.	CJT	LHE



MATERIAL:
 BODY - CDA 844-TIN PLATED
 STUD - COPPER CDA 110
 EYEBOLT - CDA 955-TIN PLATED

TOLERANCES (EXCEPT AS NOTED)				H-J ENTERPRISES, INC. 3010 HIGH RIDGE BLVD. HIGH RIDGE, MO. 63049 USA PHONE 1-636-677-3421 FAX 1-636-376-1915	
DECIMAL	± .032" / .8mm			50 KVA TERMINAL BODY, EYEBOLT, AND STUD HARDWARE ASSEMBLY	
FRACTIONAL	±	MATERIAL (SEE DRAWING)		CHK'D	APP'D
ANGULAR	± 2°	DRAWN BY	DATE	SCALE	DRAWING NO.
		CJT	10-5-98	N.T.S.	AS1019-014