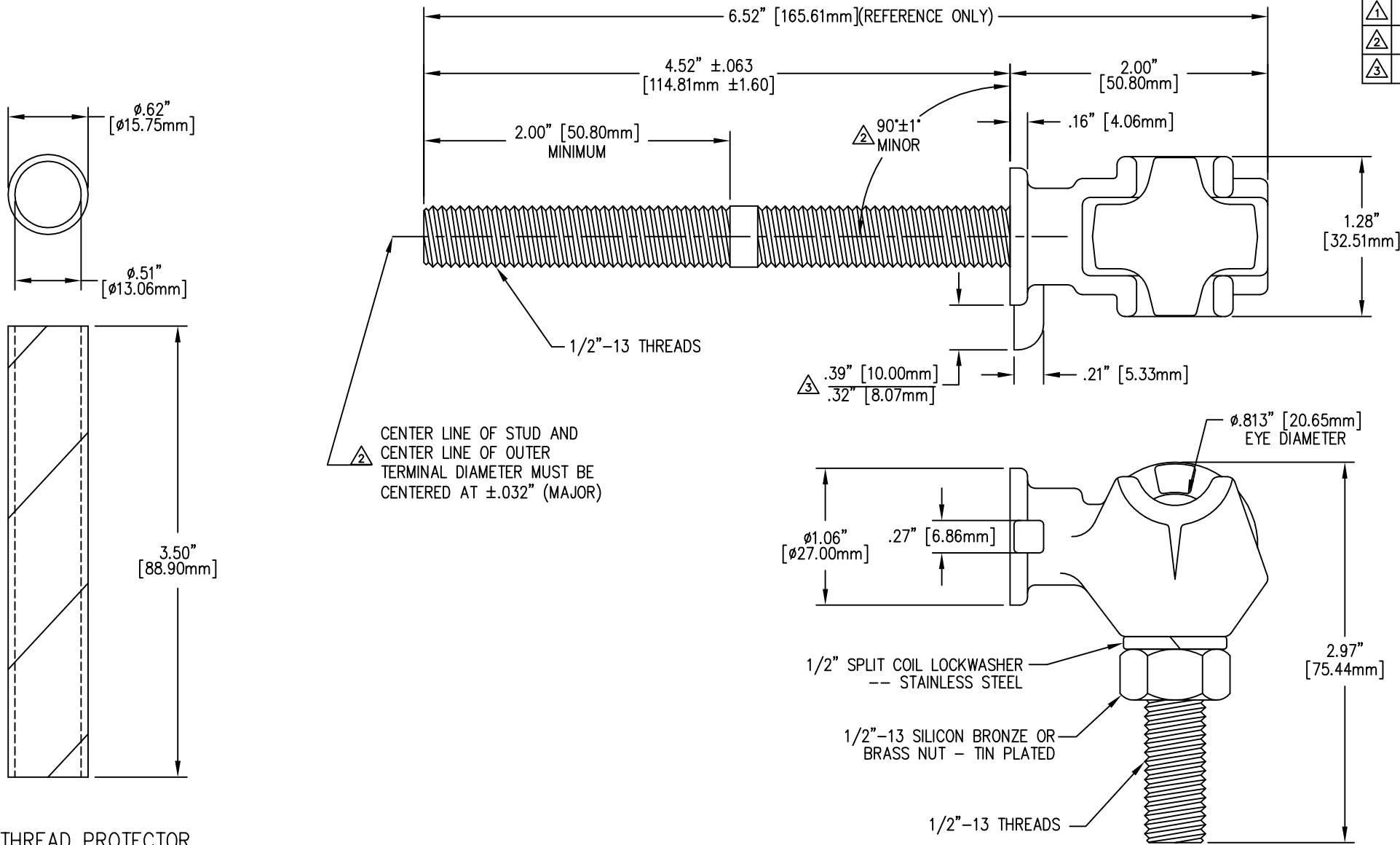



REVISIONS					
NO.	DATE	ECN #	REMARKS	BY	APPD.
1	11-23-98		REDIMENSIONED DRAWING.	CJT	LHE
2	9-3-99		ADDED A NOTE & DIM.	CJT	LHE
3	5-18-06	HJ06-054	ADDED PART # & DIM.	CJT	JM



MATERIAL:  
 STUD - COPPER CDA 11000  
 TERMINAL BODY - CDA 84400 TIN PLATED  
 EYEBOLT - CDA 95500 TIN PLATED

THREAD PROTECTOR

NOTES:  
 1. STUD HAS BEEN REMOVED IN BOTTOM VIEW FOR CLAIRITY.  
 2. CELECO PART NUMBER: D865

TOLERANCES (EXCEPT AS NOTED)				<b>H-J ENTERPRISES, INC.</b> 3010 HIGH RIDGE BLVD. HIGH RIDGE, MO. 63049 USA PHONE 1-636-677-3421 FAX 1-636-376-1915	
DECIMAL	± .032" / .8mm			<b>50 KVA EYEBOLT &amp; STUD HARDWARE ASSEMBLY</b>	
FRACTIONAL	±				
ANGULAR	± 2°	MATERIAL (SEE ABOVE)	CHK'D	APP'D	DRAWING NO.
		DRAWN BY CJT		DATE 10-01-98	SCALE N.T.S.
				AS1019-010	