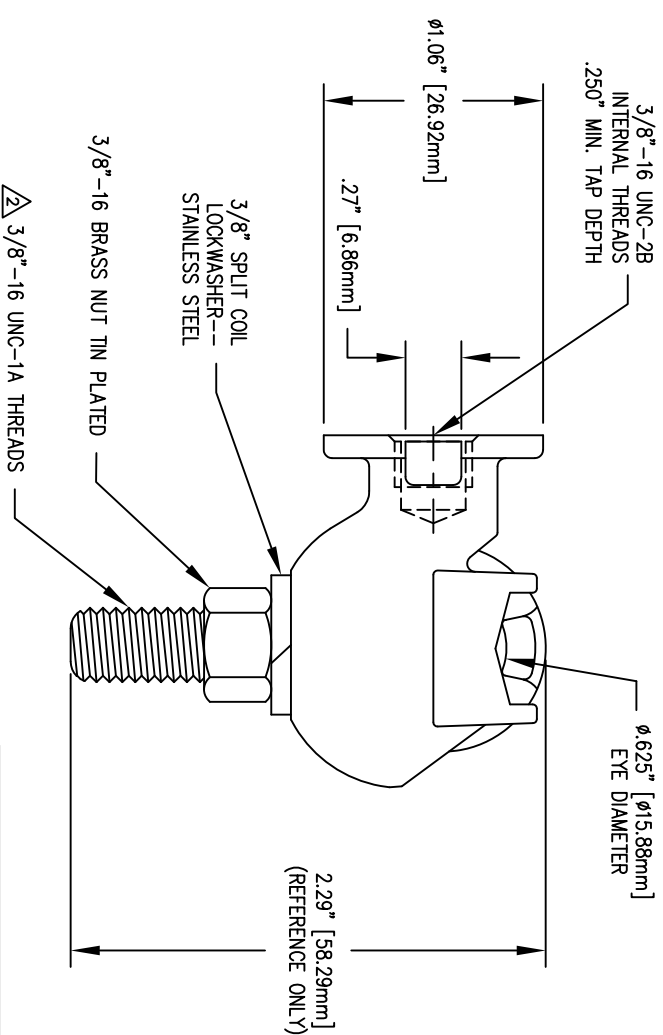
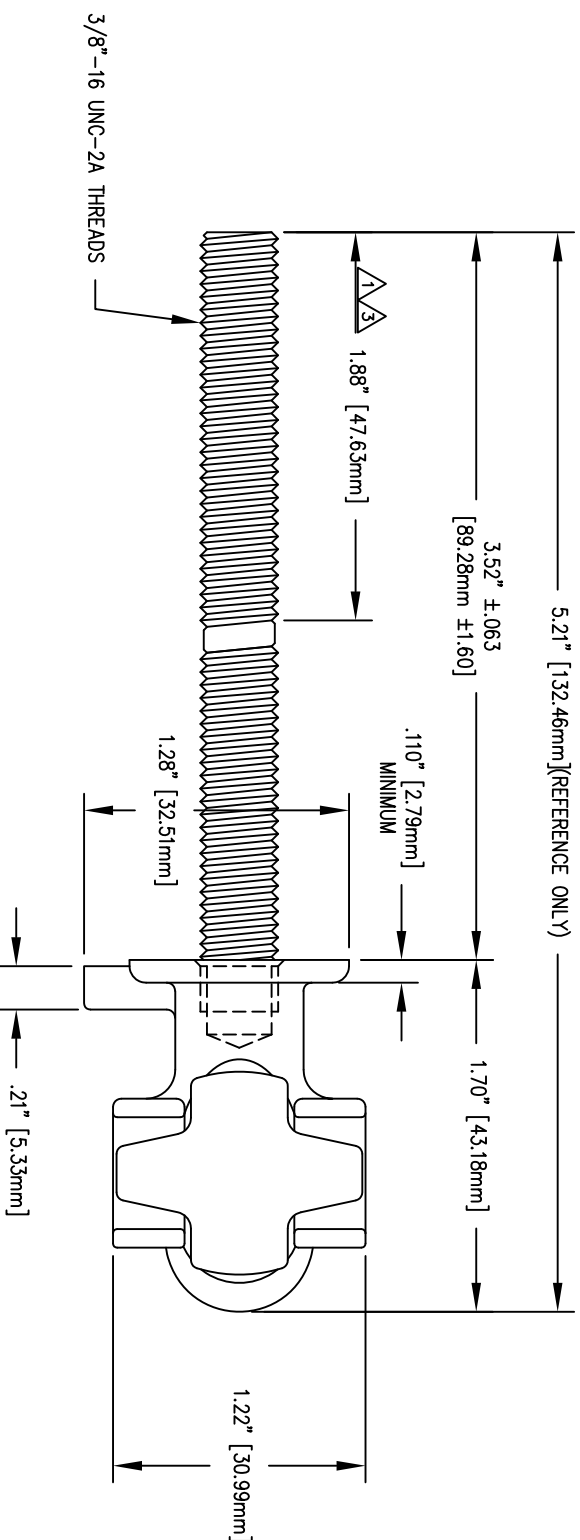


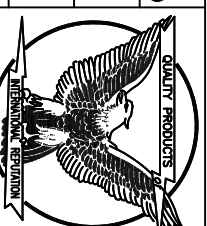
REVISIONS					
NO.	DATE	ECN #	REMARKS	BY	APPD.
1	9-24-01	HJ01-183	ADDED THREAD DIMENSION.	CJT	LHE
2	2-19-02	HJ02-002	CHANGED THREAD CALLOUT FROM ZA TO 1A.	CJT	LHE
3	3-5-15	HJ15-049	WAS 2.25"	CJT	BB



NOTE:
1. STUD HAS BEEN REMOVED FROM THE
BOTTOM VIEW FOR CLARITY.

MATERIAL:
STUD - COPPER C11000
TERMINAL BODY - C84400 TIN PLATED
EYE BOLT - C95500 TIN PLATED

TOLERANCES (EXCEPT AS NOTED)	
DECIMAL	± .032" / .8mm
FRACTIONAL	±
ANGULAR	± 2°



H-J ENTERPRISES, INC.
3010 HIGH RIDGE BLVD., HIGH RIDGE, MO. 63049 USA
PHONE 1-636-677-3421 FAX 1-636-376-1915

15 KVA L.V. TERMINAL BODY, STUD,
AND EYEBOLT HARDWARE ASSEMBLY

MATERIAL (SEE ABOVE)
CHK'D APP'D
DRAWN BY CJT DATE 1-10-01 SCALE N.T.S.
DRAWING NO. AS1018-014