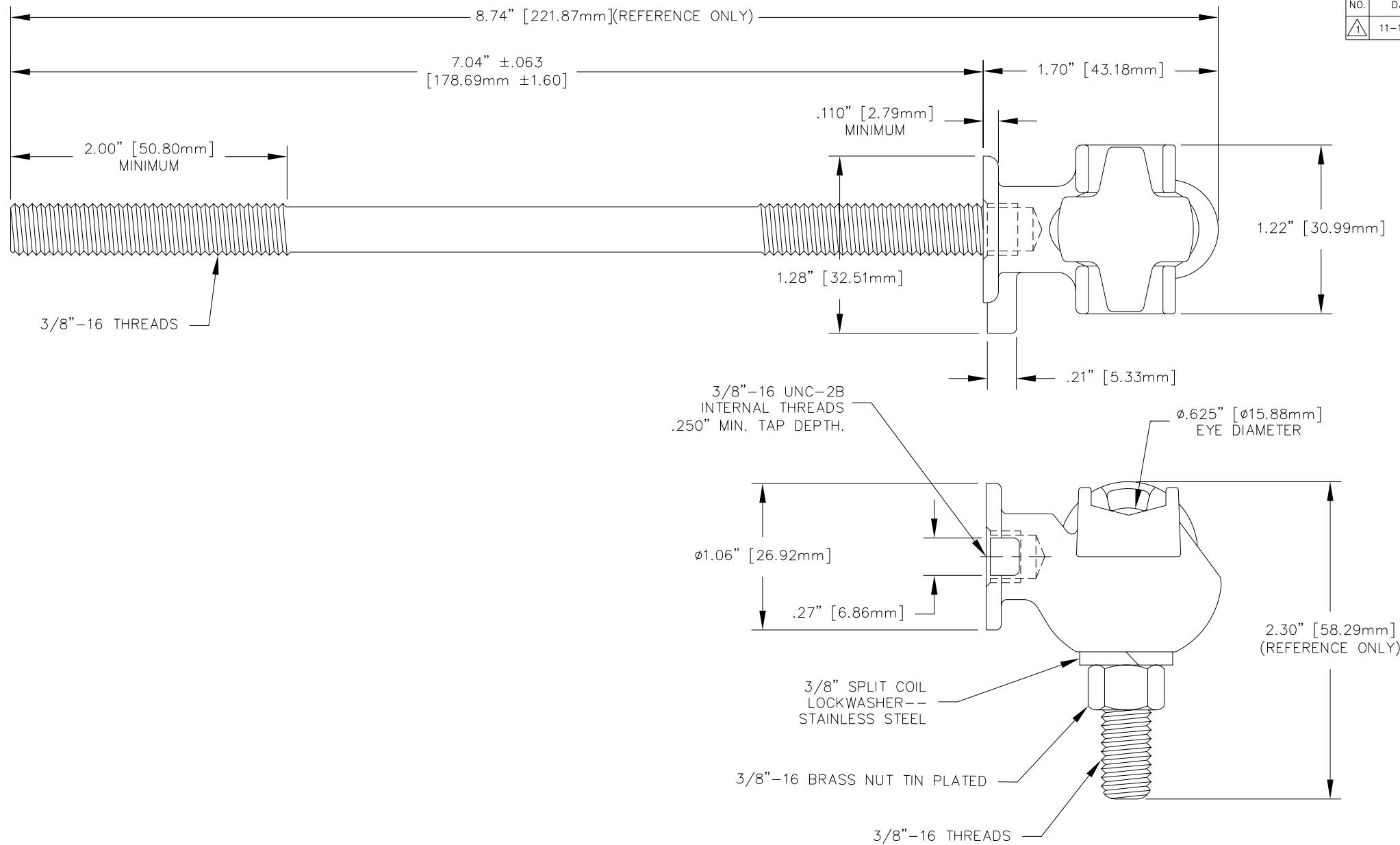



REVISIONS				
NO.	DATE	REMARKS	BY	APPD.
1	11-12-99	REDRAWN & REDIMENSIONED.	CJT	LHE



MATERIAL:
 STUD - COPPER CDA 110
 BODY - CDA 844 TIN PLATED.
 EYEBOLT - CDA 955 TIN PLATED

TOLERANCES (EXCEPT AS NOTED)				H-J ENTERPRISES, INC. 3010 HIGH RIDGE BLVD. HIGH RIDGE, MO. 63049 USA PHONE 1-636-677-3421 FAX 1-636-376-1915	
DECIMAL	± .032" / .8mm			TERMINAL BODY, EYEBOLT AND STUD ASSEMBLY	
FRACTIONAL	±	MATERIAL (SEE ABOVE)		CHK'D	APP'D
ANGULAR	± 2°	DRAWN BY CJT	DATE 9-22-98	SCALE N.T.S.	DRAWING NO. AS1018-007