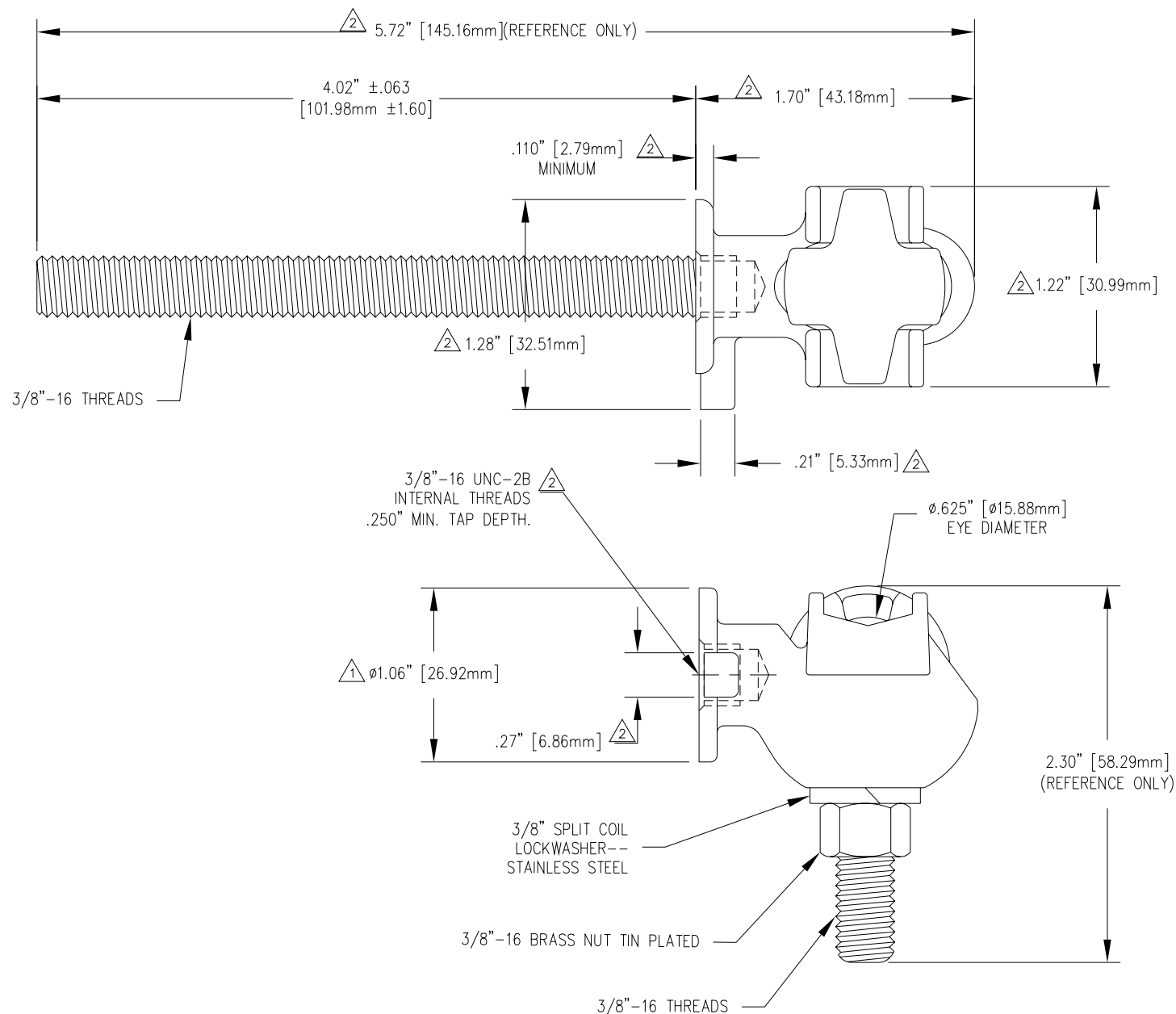


REVISIONS				
NO.	DATE	REMARKS	BY	APPD.
1	1-17-97	ADDED THREAD PROTECTOR & DIMS. ON TERMINAL BODY & REMOVED ONE STUD	BTD	LHE
2	11-15-99	REDREW CAP, ADDED TAP NOTE, EDITED & ADDED DIMS.	CJT	LHE



△ NOTE:  
STUD HAS BEEN REMOVED FROM THE BOTTOM VIEW FOR CLARITY

MATERIAL:  
STUD - COPPER CDA 110  
TERMINAL BODY - CDA 844 TIN PLATED  
EYE BOLT - CDA 955 TIN PLATED  
INCLUDES THREAD PROTECTOR (INSTALLED)

TOLERANCES (EXCEPT AS NOTED)				<b>H-J ENTERPRISES, INC.</b> 3010 HIGH RIDGE BLVD. HIGH RIDGE, MO. 63049 USA PHONE 1-636-677-3421 FAX 1-636-376-1915	
DECIMAL	± .032"/.8mm			15 KVA L.V. EYEBOLT & STUD HARDWARE ASSEMBLY	
FRACTIONAL	±	MATERIAL (SEE ABOVE)		CHK'D	APP'D
ANGULAR	± 2°	DRAWING NO.		SCALE	N.T.S.
DRAWN BY TLH		DATE 4-24-96		AS1018-006	