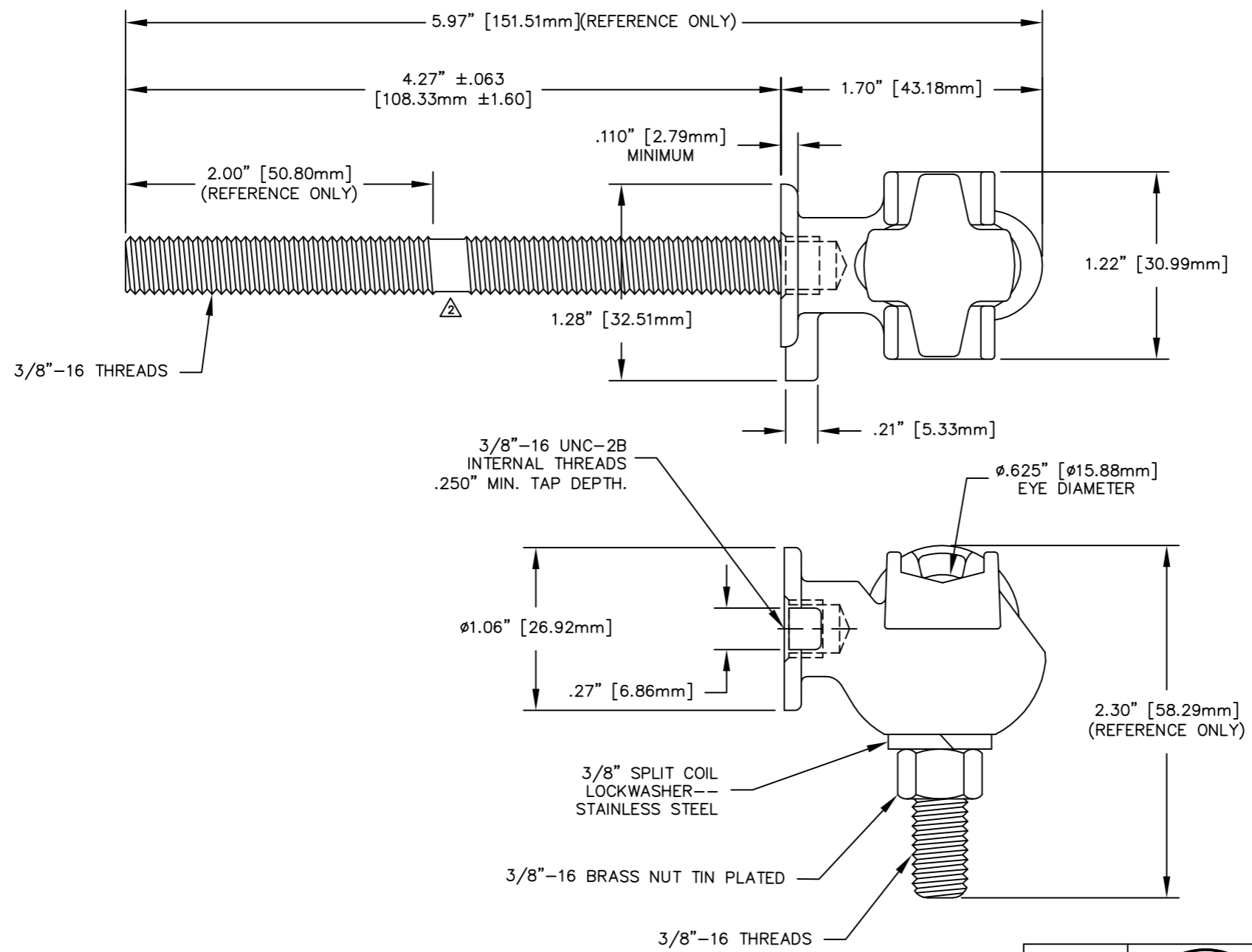


REVISIONS					
NO.	DATE	ECN #	REMARKS	BY	APPD.
1	11-12-99		REDRAWN & REDIMENSIONED.	CJT	LHE
2	2-16-06	HJ06-011	REVISED THREADS.	CJT	SP



MATERIAL:
 STUD - COPPER CDA 11000
 BODY - CDA 84400 TIN PLATED.
 EYEBOLT - CDA 95500 TIN PLATED

TOLERANCES (EXCEPT AS NOTED)	
DECIMAL	± .032" / .8mm
FRACTIONAL	±
ANGULAR	± 2°



H-J ENTERPRISES, INC.
 3010 HIGH RIDGE BLVD. HIGH RIDGE, MO. 63049 USA
 PHONE 1-636-677-3421 FAX 1-636-376-1915

TERMINAL BODY, EYEBOLT AND STUD ASSEMBLY

MATERIAL (SEE ABOVE)

CHK'D	APP'D	DRAWING NO.
		AS1018-004

DRAWN BY	DATE	SCALE
CJT	9-22-98	N.T.S.