



TITLE

OUTLINE

32B548085
CONT ON SH SH

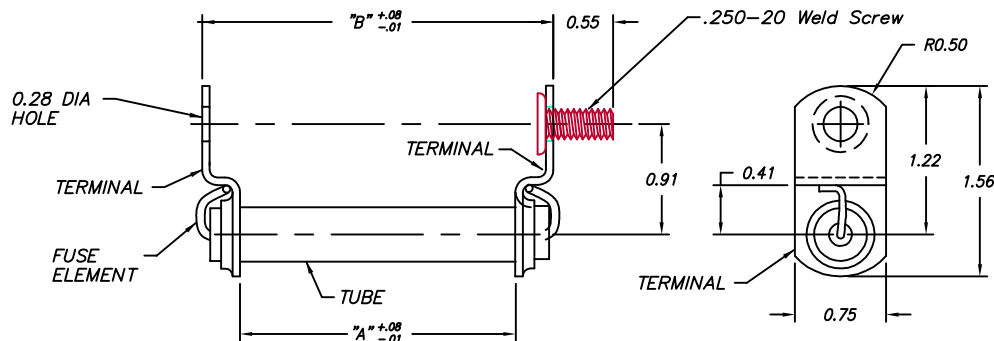
UNLESS OTHERWISE SPECIFIED, TOLERANCES ARE

SURFACES	2 PL DEC	3 PL DEC	ANGLES
✓	± 0.01	± 0.005	± 5 DEG

FIRST MADE FOR

9F54 Explosion Fuse

MODEL NUMBER	"A"	"B"	TIME CURRENT CURVE NO.	MAXIMUM DESIGN KV	AMP RATING
9F54DAA101	2.25	2.88	A1 SEE NOTE 1	5.2	3
9F54DAA201	2.25	2.88	A2 SEE NOTE 1	5.2	4
9F54DAA301	2.25	2.88	A3 SEE NOTE 1	5.2	5
9F54DAA401	2.25	2.88	A4 SEE NOTE 1	5.2	7
9F54DAA501	2.25	2.88	A5 SEE NOTE 1	5.2	9
9F54DAA601	2.25	2.88	A6 SEE NOTE 1	5.2	10
9F54DAA701	2.25	2.88	A7 SEE NOTE 1	5.2	12
9F54DAA801	2.25	2.88	A8 SEE NOTE 1	5.2	15
9F54DAA901	2.25	2.88	A9 SEE NOTE 1	5.2	19
9F54DAB001	2.25	2.88	A10 SEE NOTE 1	5.2	24
9F54DAB101	2.25	2.88	A11 SEE NOTE 1	5.2	28
9F54DAB201	2.25	2.88	A12 SEE NOTE 1	5.2	39
9F54DAB301	2.25	2.88	A13 SEE NOTE 1	5.2	45
9F54DAB401	2.25	2.88	A14 SEE NOTE 1	5.2	57
9F54DBA101	3.25	3.88	B1 SEE NOTE 2	8.4	3
9F54DBA201	3.25	3.88	B2 SEE NOTE 2	8.4	4
9F54DBA301	3.25	3.88	B3 SEE NOTE 2	8.4	5
9F54DBA401	3.25	3.88	B4 SEE NOTE 2	8.4	7
9F54DBA501	3.25	3.88	B5 SEE NOTE 2	8.4	9
9F54DBA601	3.25	3.88	B6 SEE NOTE 2	8.4	10
9F54DBA701	3.25	3.88	B7 SEE NOTE 2	8.4	12
9F54DBA801	3.25	3.88	B8 SEE NOTE 2	8.4	15
9F54DBA901	3.25	3.88	B9 SEE NOTE 2	8.4	19
9F54DBB001	3.25	3.88	B10 SEE NOTE 2	8.4	24
9F54DBB101	3.25	3.88	B11 SEE NOTE 2	8.4	28
9F54DBB201	3.25	3.88	B12 SEE NOTE 2	8.4	34
9F54DBB301	3.25	3.88	B13 SEE NOTE 2	8.4	40
9F54DBB401	3.25	3.88	B14 SEE NOTE 2	8.4	48



NOTES:

- MINIMUM MELTING T.C.C. - GES 8316
MAXIMUM TOTAL CLEARING T.C.C. - GES 8306
- MINIMUM MELTING T.C.C. - GES 8317
MAXIMUM TOTAL CLEARING T.C.C. - GES 8307
- FOR VERTICAL MOUNTING ONLY.

REVISIONS		APPROVAL		HICKORY ERMCO		32B548085	
0	14-Feb-1980						
1	G. Davis 15-June-89 Retrace; Updated Delin.						
2	A. Downs 17-Mar-95 CHANGED ROUTING						
3	K. Carroll 28-Jan-96 Updated Routing. Retrace onto Outline Template. Updated Term. Am per ECM 800						
4	STULPIN 11-MAR-98 CORRECTED MISSING DIM B & .56 & DEC PLACES TO DIM						
5	STULPIN 03-FEB-99 UPDATED TEMPLATE						
6	STULPIN 20-APR-01 ADDED AMP RATING						
7	GILLAND 11/12/03 ADDED TOLERANCE						
MADE BY: A. Millikan 29-Jan-1980		ISSUED BY: R. GILLAND 11/12/03		CONT ON SH		SH	

ECT-BTL

PRINTS TO

B-4

11/03