

NOTES:

- A - MATERIAL: ALUMINUM, 356-T6.
- B - ANODIZE - HARDCOAT 12μ 0.0005" [.0127mm] THICK.
- C - GRAY GLAZE MUSELL 5BG 7.0/.04
GLAZE INTERNAL AND EXTERNAL (EXCEPT GROUND END FACES).
- D - CREEPPAGE DISTANCE = 51.8" [1315.00mm] MINIMUM

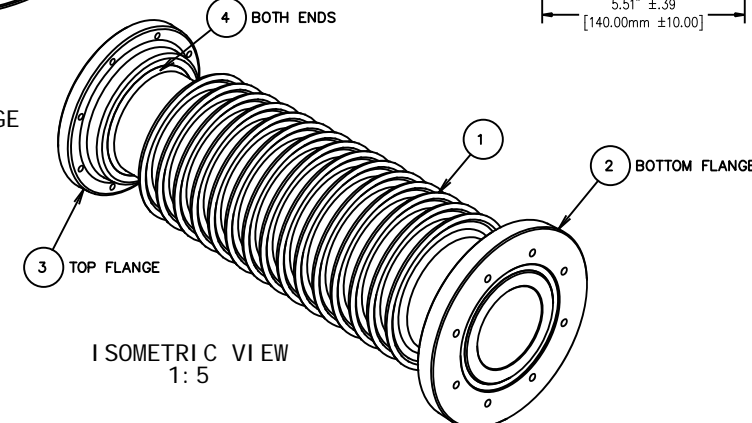
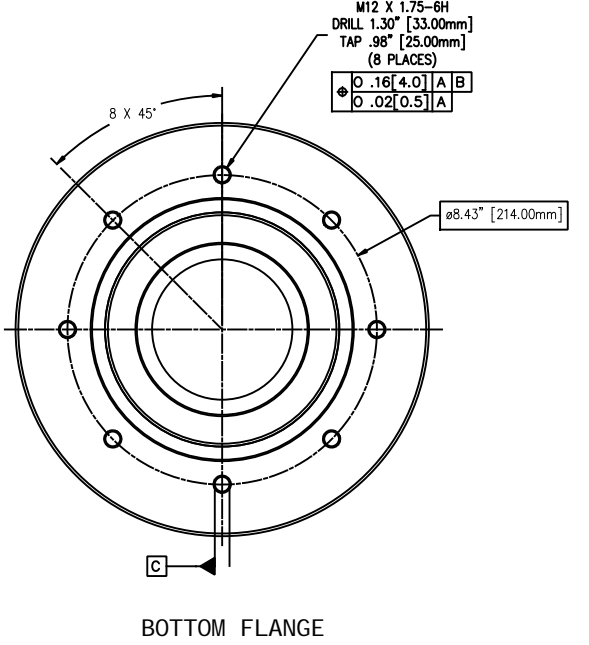
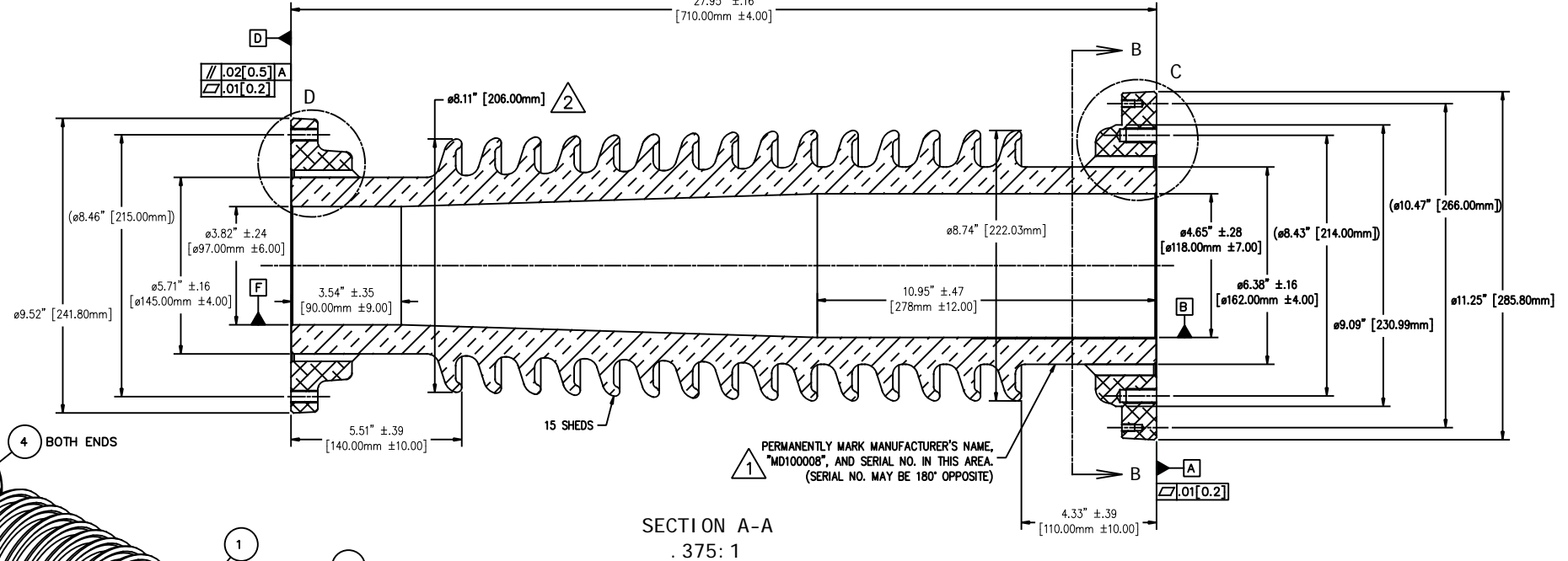
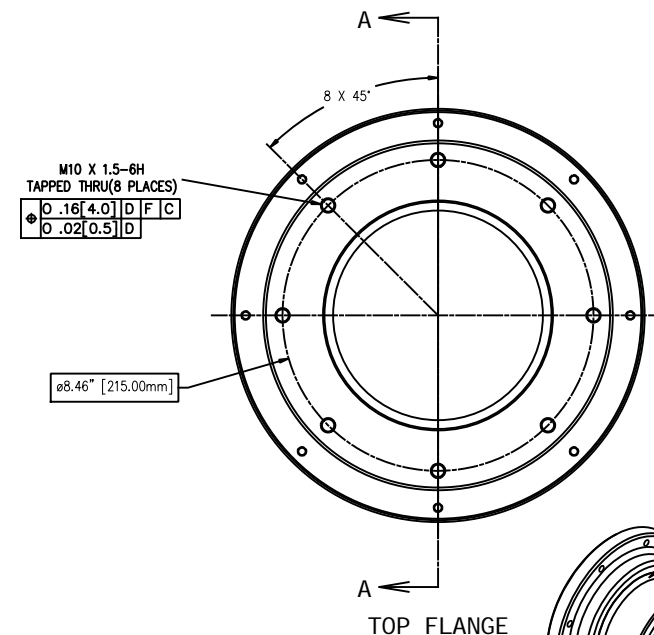
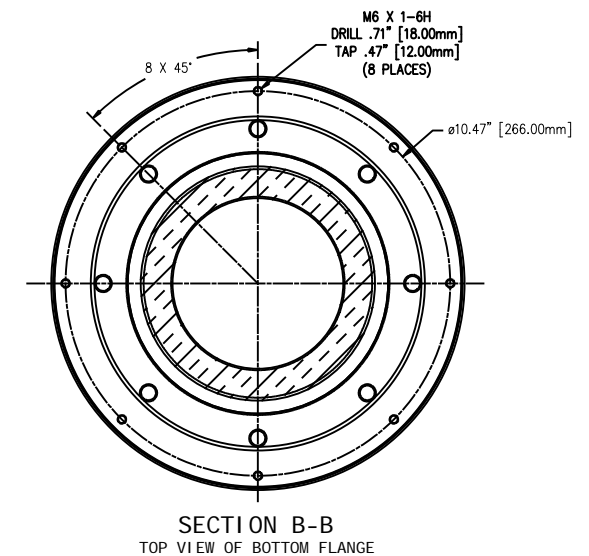
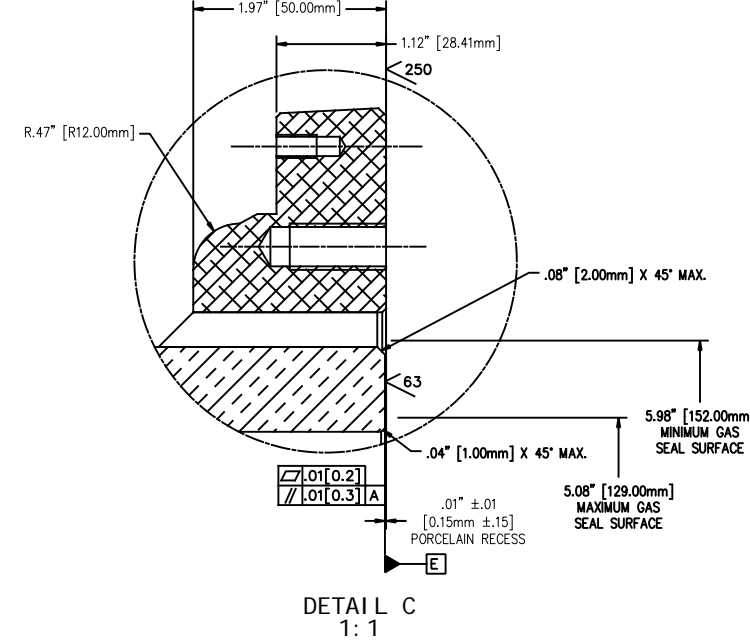
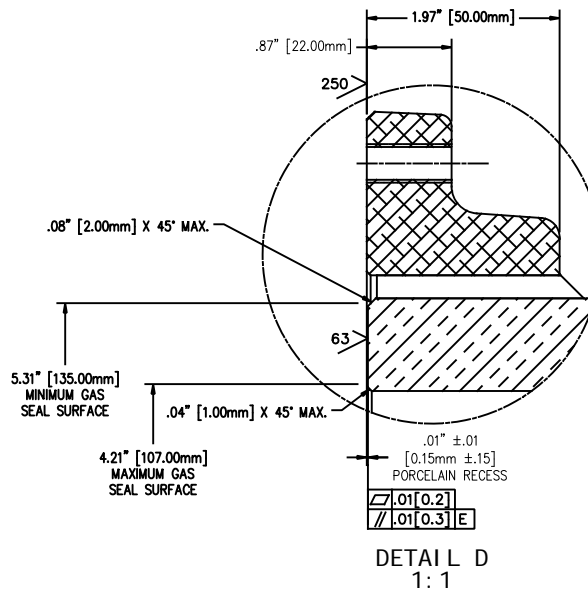
GENERAL NOTES:

- 1 - CANTILEVER FACTURE LOAD.....>12.5 kN [2,810 lbs.]
- 2 - DESIGN PRESSURE.....0.97 MPa [140 PSI]
- A. PRODUCTION TEST PRESSURE.....2.90 MPa [420 PSI] FOR 5 MINUTES
- B. INTERNAL RUPTURE PRESSURE.....4.10 MPa [595 PSI]
- 3 - GAS SEAL SURFACE MUST BE FREE OF VISIBLE DEFECTS.
- 4 - BREAK ALL SHARP EDGES.
- 5 - FINISHED PART MUST BE CLEAN, DRY, AND FREE FROM ALL CONTAMINANTS.
PROTECT ALL SURFACES FROM DAMAGE DURING SHIPPING, HANDLING, AND STORAGE.
- 6 - PORCELAIN TOLERANCE ±3% WITH NOTHING LESS THAN ±.03" [.76mm], UNLESS OTHERWISE NOTED.
- 7 - MANUFACTURE PER MPS0001.
- 8 - REFER TO ILL-PO-001 FOR FLANGE INSTALLATION.

4 3

ITEM	DESCRIPTION	NOTES
01	PORCELAIN INSULATOR	C D
02	BOTTOM FLANGE	A B
03	TOP FLANGE	A B
04	PORTLAND CEMENT	

REVISIONS					
NO.	DATE	ECN #	REMARKS	BY	APPD.
1	09-10-14	HJ14-143	ADDED "MD100008"	CLS	BLB
2	02-11-15	HJ15-031	REMOVED "MPS0001" NOTE, ADDED Ø8.11" DIM	CLS	EDZ
3	12-15-15	HJ15-254	ADDED "L" TO PO-STD-1L	CLS	EDZ
4	01-11-16	HJ15-259	REM. "PO-STD-1L" SPEC, ADDED "MPS0001" SPEC	CLS	BLB



TOLERANCES (EXCEPT AS NOTED) DECIMAL ±.032" / .8mm FRACTIONAL ± ANGULAR ± 2°		H-J ENTERPRISES, INC. 3010 HIGH RIDGE BLVD. HIGH RIDGE, MO. 63049 USA PHONE 1-636-677-3421 FAX 1-636-376-1915	
		70kV HIGH VOLTAGE FLANGE BUSHING ASSEMBLY	
		MATERIAL WET PROCESS PORCELAIN	
		CHK'D EDZ	APP'D 12-15-15
DRAWN BY CLS	DATE 06-27-2014	SCALE N.T.S.	