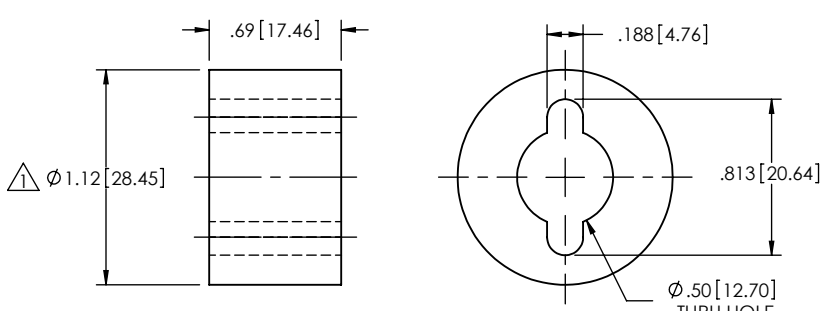
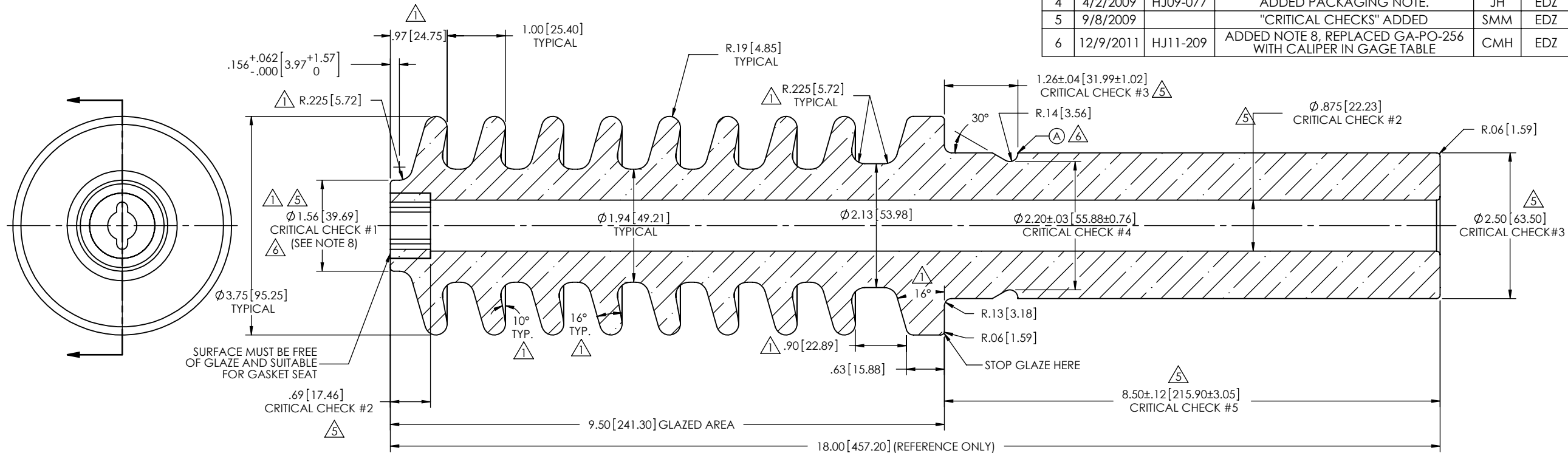


REVISIONS					
REV.	DATE	ECN #	DESCRIPTION	BY	APPD
1	7/8/2008		REVISED INSERT CONFIGURATION, SHED ANGLES, AND DIMENSIONS.	CJT	EDZ
2	7/23/2008		WAS PO-XXXX-174-2.	CJT	EDZ
3	8/26/2008		WAS POBHVO-47N.	CJT	EDZ
4	4/2/2009	HJ09-077	ADDED PACKAGING NOTE.	JH	EDZ
5	9/8/2009		"CRITICAL CHECKS" ADDED	SMM	EDZ
6	12/9/2011	HJ11-209	ADDED NOTE 8, REPLACED GA-PO-256 WITH CALIPER IN GAGE TABLE	CMH	EDZ



PREFERRED INSERT
PI-0003-01

- PORCELAIN NOTES:**
1. GRAY GLAZE MUNSELL 5BG 7.0/0.4
 2. GLAZE IN BORE AND ON SHANK IS OPTIONAL.
 3. TOLERANCE ±3% WITH NOTHING LESS THAN ±.03", UNLESS OTHERWISE NOTED ON DRAWING.
 4. PLUG TO BE GLAZED OIL TIGHT INTO BUSHING.
 5. CREEP DISTANCE: 20.90" [530.86mm]
 6. ALL PORCELAIN MUST BE INSPECTED TO QUALITY ASSURANCE STANDARD PO-STD-1 "STANDARD FOR VISUAL INSPECTION OF PORCELAIN INSULATORS"
 7. REFER TO DRAWING PO-PACKAGING-061 FOR PACKAGING REQUIREMENTS.
 8. MUST TAKE Ø 1.606" GO SIDE OF CAP GAGE AND MUST GO .156" MIN. DEPTH WITHOUT TOUCHING THE RADIUS OF THE TOP SKIRT.
 9. GAUGE GA-PO-252 CRITICAL CHECK #3 SHOULD BE CHECKING THE SHANK DIAMETER RIGHT AT THE EDGE OF THE SPRING GROOVE ON THE SHANK SIDE, SEE POINT (A).

#	GAGE NUMBER
1	GA-PO-250
2	GA-PO-251
3	GA-PO-252
4	GA-PO-254
5	CALIPER

PROPRIETARY AND CONFIDENTIAL
THE INFORMATION CONTAINED IN THIS DRAWING IS THE SOLE PROPERTY OF H-J ENTERPRISES, INC. ANY REPRODUCTION IN PART OR AS A WHOLE WITHOUT THE WRITTEN PERMISSION OF H-J ENTERPRISES, INC. IS PROHIBITED.

TOLERANCES (EXCEPT AS NOTED)		H - J ENTERPRISES, INC. 3010 HIGH RIDGE BLVD. HIGH RIDGE, MO. 63049 USA PHONE 1-636-677-3421 FAX 1-636-376-1915	
DECIMAL	+/- .032"/.8mm		
FRACTIONAL	+/-	INSULATOR BUSHING 25KV - 150BIL	
ANGULAR	+/- 2 Degrees		
DRAWN BY CJT		DATE 6-19-07	
SCALE N.T.S.		DRAWING NO. P00195-001	

MATERIAL WET PROCESS PORCELAIN

CHK'D APP'D DRAWING NO. P00195-001