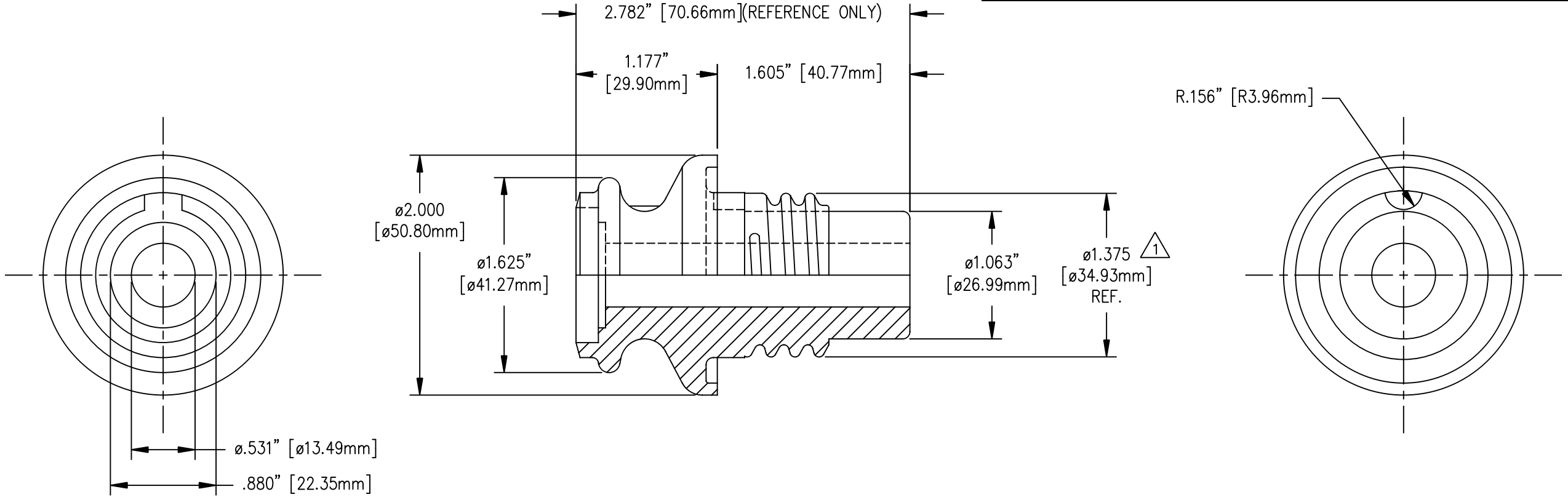


REVISIONS					
NO.	DATE	ECN #	REMARKS	BY	APPD.
1	12-23-14	HJ14-269	Ø1.375 REF. WAS Ø1.391	CLS	BLB



MATERIAL REFERENCE	RATING 630
POLYBUTYLENE TEREPHTHALATE (PBT) ENGINEERING THERMOPLASTIC	
CHARACTERISTICS	
CREEP DISTANCE	1.97" / 50mm
DRY ARCING DISTANCE	1.32" / 34mm
CANTILEVER STRENGTH	300 ft.-lbs.
DRY AC WITHSTAND (1 MINUTE) 60 Hz	10
WET AC WITHSTAND (10 SECONDS) 60 Hz	6
POSITIVE LIGHTNING IMPULSE WITHSTAND, kV	30
NEGATIVE LIGHTNING IMPULSE WITHSTAND, kV	30

TOLERANCES (EXCEPT AS NOTED)	
DECIMAL	.XX ± .05" / 1.27mm .XXX ± .01" / .25mm
FRACTIONAL	±
ANGULAR	± 2°



H-J ENTERPRISES, INC. 3010 HIGH RIDGE BLVD. HIGH RIDGE, MO. 63049 USA PHONE 1-636-677-3421 FAX 1-636-376-1915		
1/2" NON-PORCELAIN INSULATOR		
MATERIAL SEE DRAWING		
CHK'D	APP'D	DRAWING NO.
DRAWN BY JRM	DATE 2-17-04	SCALE N.T.S.
P00015-001		