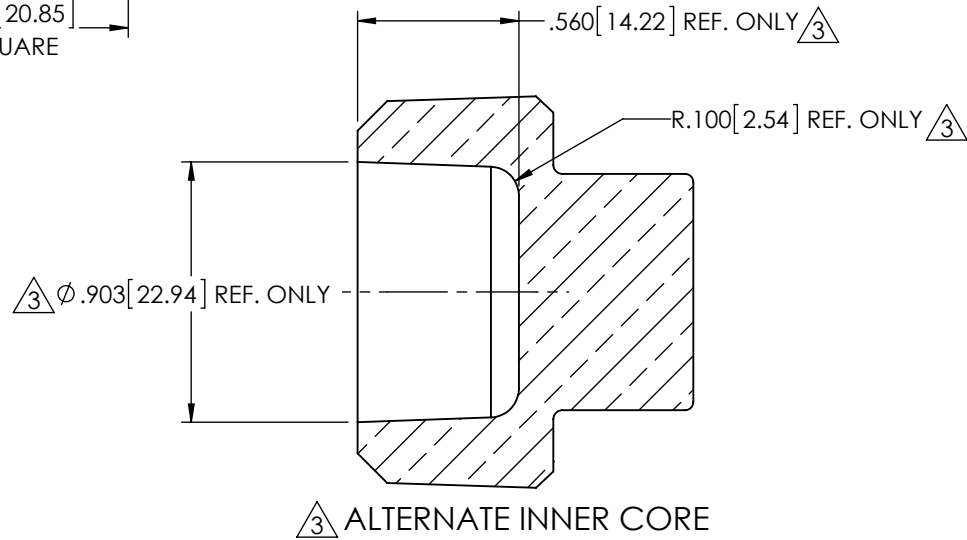
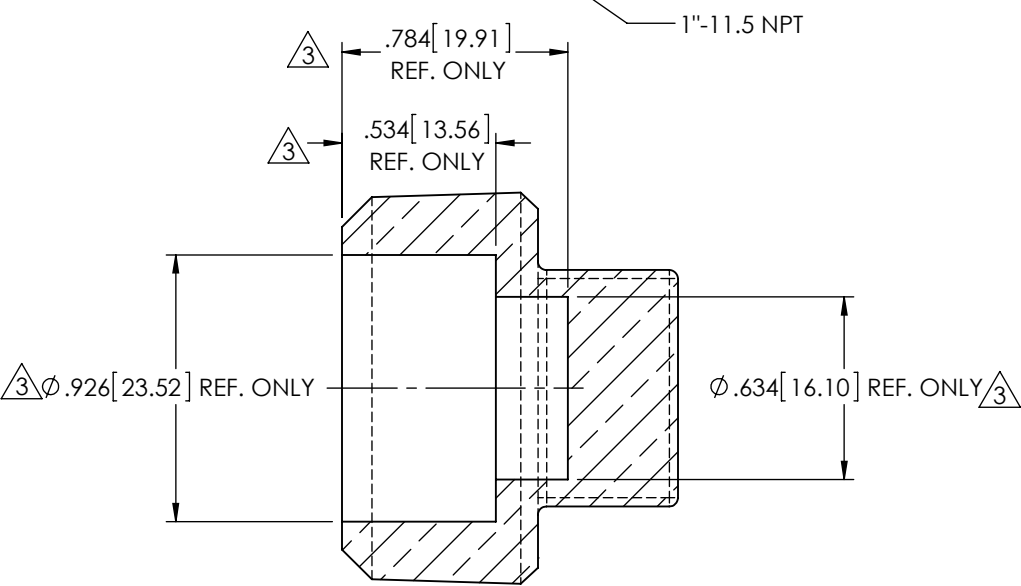
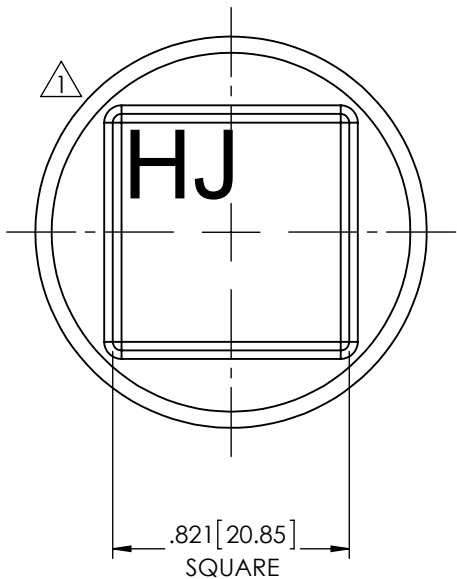
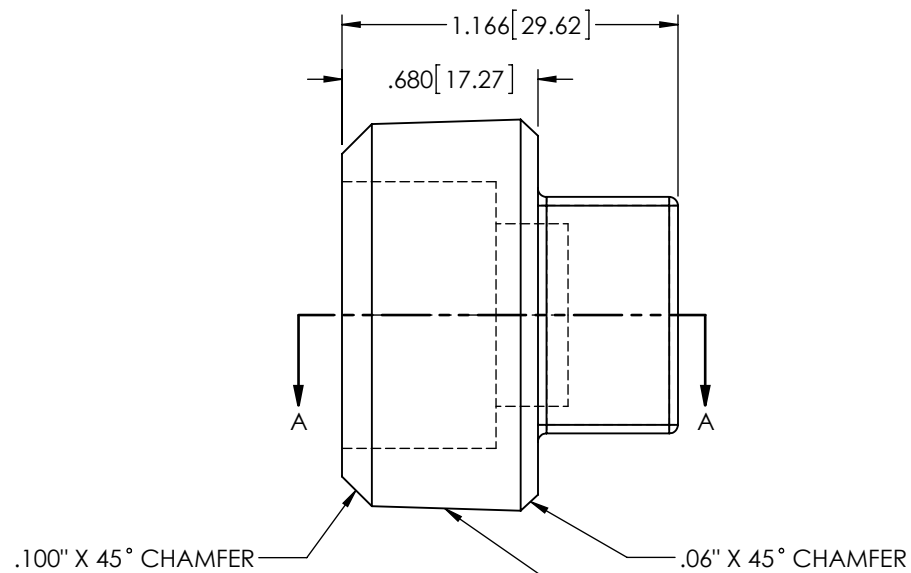


REVISIONS					
REV.	DATE	ECN #	DESCRIPTION	BY	APPROVED
1	9/15/1999		ADDED "HJ" ENGRAVING	CJT	LHE
2	5/12/2004		REDREW AND REDIMENSIONED	JRM	SP
3	5/31/2012	HJ12-098	REDREW, ADDED ALTERNATE CORE VIEW AND MADE CORE DIMENSIONS REFERENCE	CLS	JFS
4	4/3/2013	HJ13-083	ADDED HPb58-3	CLS	AB
5	2/3/2014	HJ14-016	ADDED NOTE 3.	BS	BLB



SECTION **A-A**

NOTE:  
 1. ALL FILLETS AND ROUNDS R.03" UNLESS OTHERWISE NOTED.  
 2. EITHER INNER CORE IS ACCEPTABLE AS IT IS A NON-CRITICAL FEATURE.  
 3. PACKAGED 120 PER BOX.

**PROPRIETARY AND CONFIDENTIAL**  
 THE INFORMATION CONTAINED IN THIS DRAWING IS THE SOLE PROPERTY OF H-J ENTERPRISES, INC. ANY REPRODUCTION IN PART OR AS A WHOLE WITHOUT THE WRITTEN PERMISSION OF H-J ENTERPRISES, INC. IS PROHIBITED.

TOLERANCES (EXCEPT AS NOTED)	
DECIMAL	+/- .032"/.8mm
FRACTIONAL	+/-
ANGULAR	+/- 2 Degrees



H - J ENTERPRISES, INC.  
 3010 HIGH RIDGE BLVD. HIGH RIDGE, MO. 63049 USA  
 PHONE 1-636-677-3421 FAX 1-636-376-1915

**1"-11.5 SQUARE HEAD CORED**

MATERIAL CDA 84400 OR HPb58-3

CHK'D CJT APP'D 2/3/14  
 SCALE N.T.S.

DRAWING NO. PG6031-001

DRAWN BY CJT DATE 05/17/1999