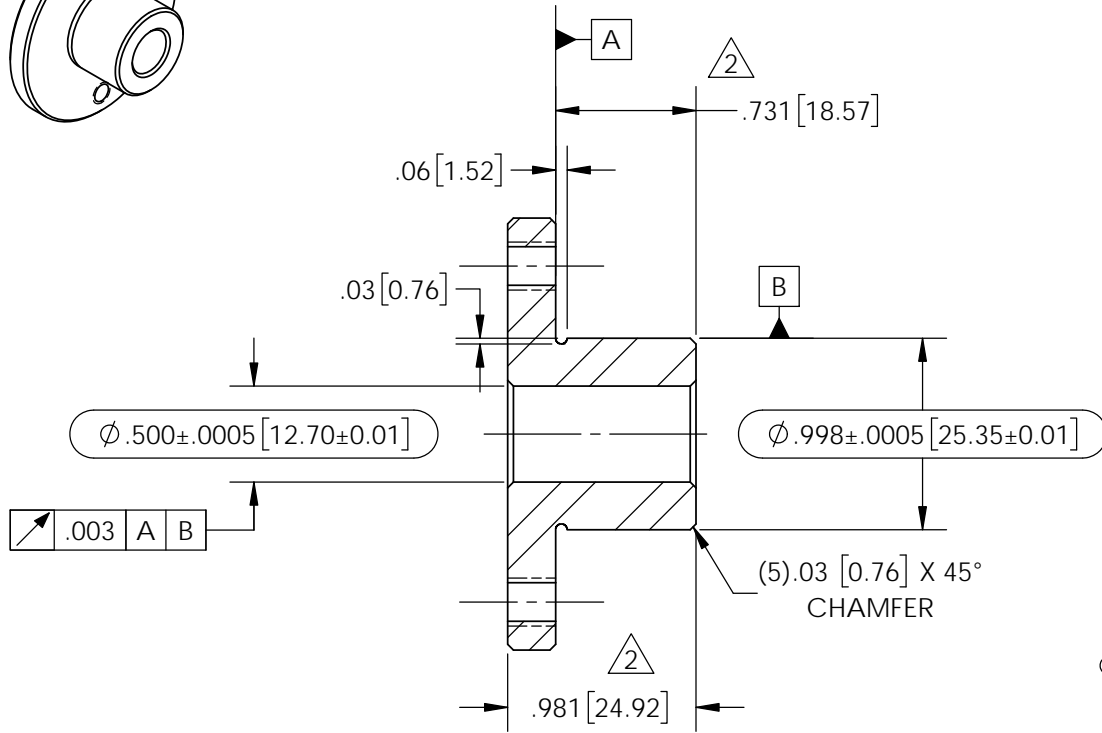
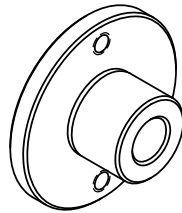
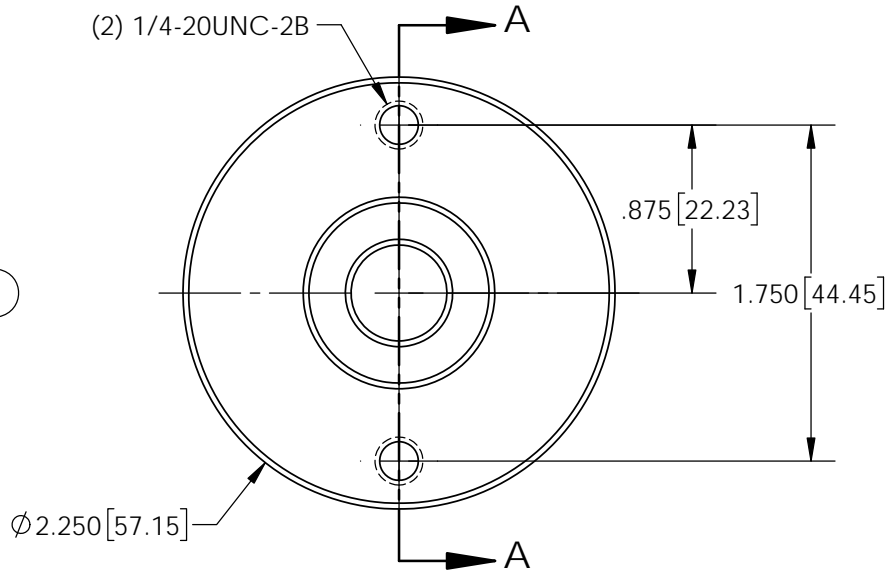


REVISIONS					
REV.	DATE	ECN #	DESCRIPTION	BY	APP'D
1	4/14/2015	PQI#11058	CHG'D MAT'L, WAS 4141-TO-4140 STL. ADDED GN'S 4 & 5, CUSTOMER PART #	TJF	BLB
2	8/1/2016	HJ16-150	CHG'D DIM, WAS .700-TO-.731, WAS .950-TO-.981. UPDATED NOTE 4	TJF	BLB



SECTION A-A



- NOTES:
- 1. QUENCH & TEMPER TO HRC 45-50
 - 2. ALL DIMENSIONS APPLY AFTER HEAT TREATMENT
 - 3. - INDICATES FEATURES CRITICAL TO PART FUNCTION AND REQUIRING GAGING CONSIDERATIONS.
 - 4. CUSTOMER PART #: 0061-003337-143 REV B
 - 5. PACKAGE IN BAG AFTER LIGHT OIL COATING.

PROPRIETARY AND CONFIDENTIAL
 THE INFORMATION CONTAINED IN THIS DRAWING IS THE SOLE PROPERTY OF H-J ENTERPRISES, INC. ANY REPRODUCTION IN PART OR AS A WHOLE WITHOUT THE WRITTEN PERMISSION OF H-J ENTERPRISES, INC. IS PROHIBITED.
 REMOVE ALL BURRS & SHARP EDGES

TOLERANCES (EXCEPT AS NOTED) DIMENSIONS ARE SHOWN IN: in/mm	
DECIMAL	XX = ± .01 [.25mm] XXX = ± .005 [.13mm]
FRACTIONAL	±
ANGULAR	± 1°



H-J ENTERPRISES, INC.
 3010 HIGH RIDGE BLVD. HIGH RIDGE, MO. 63049 USA
 PHONE 1-636-677-3421 FAX 1-636-376-1915

1			STEEL BUSHING		
MATERIAL			4140 STEEL		
CHK'D	APP'D	DRAWING NO.			
-	1/6/2015	MH0314-001			
DRAWN BY		DATE	SCALE		
TJF		1/06/2015	N.T.S.		