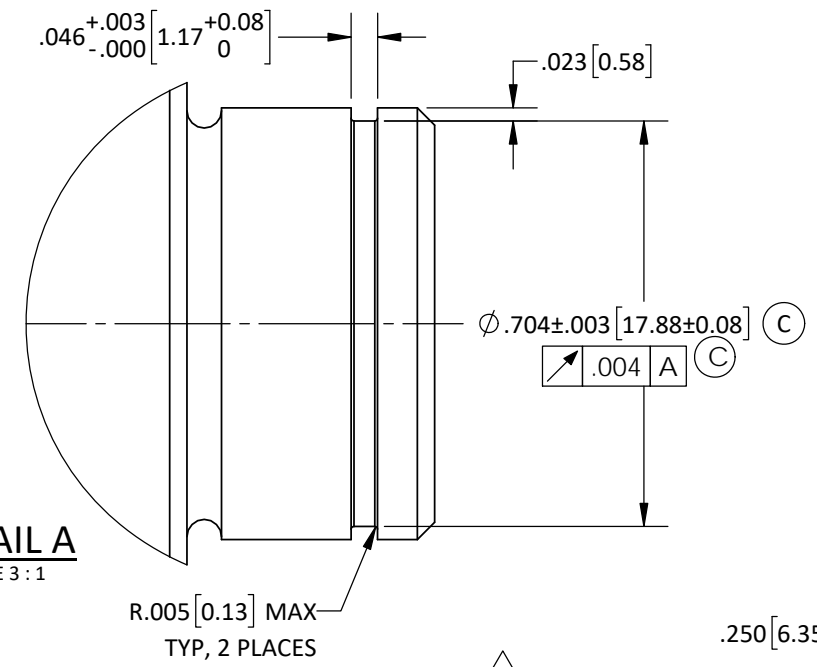
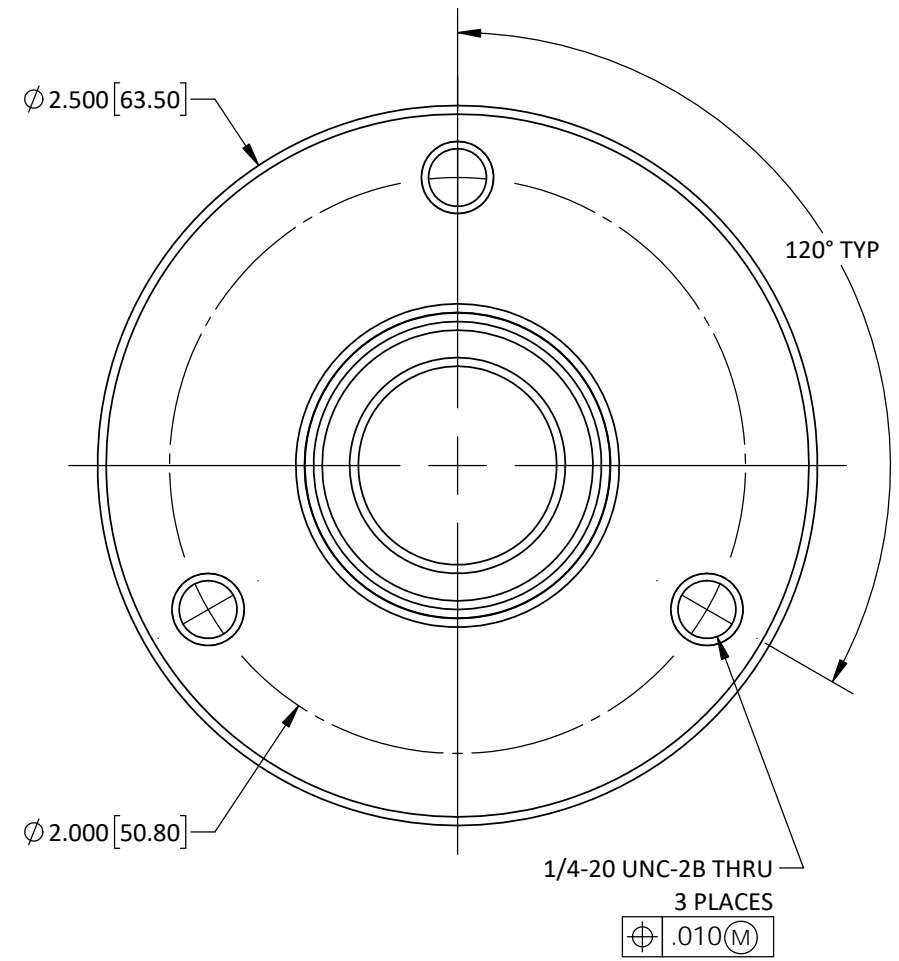
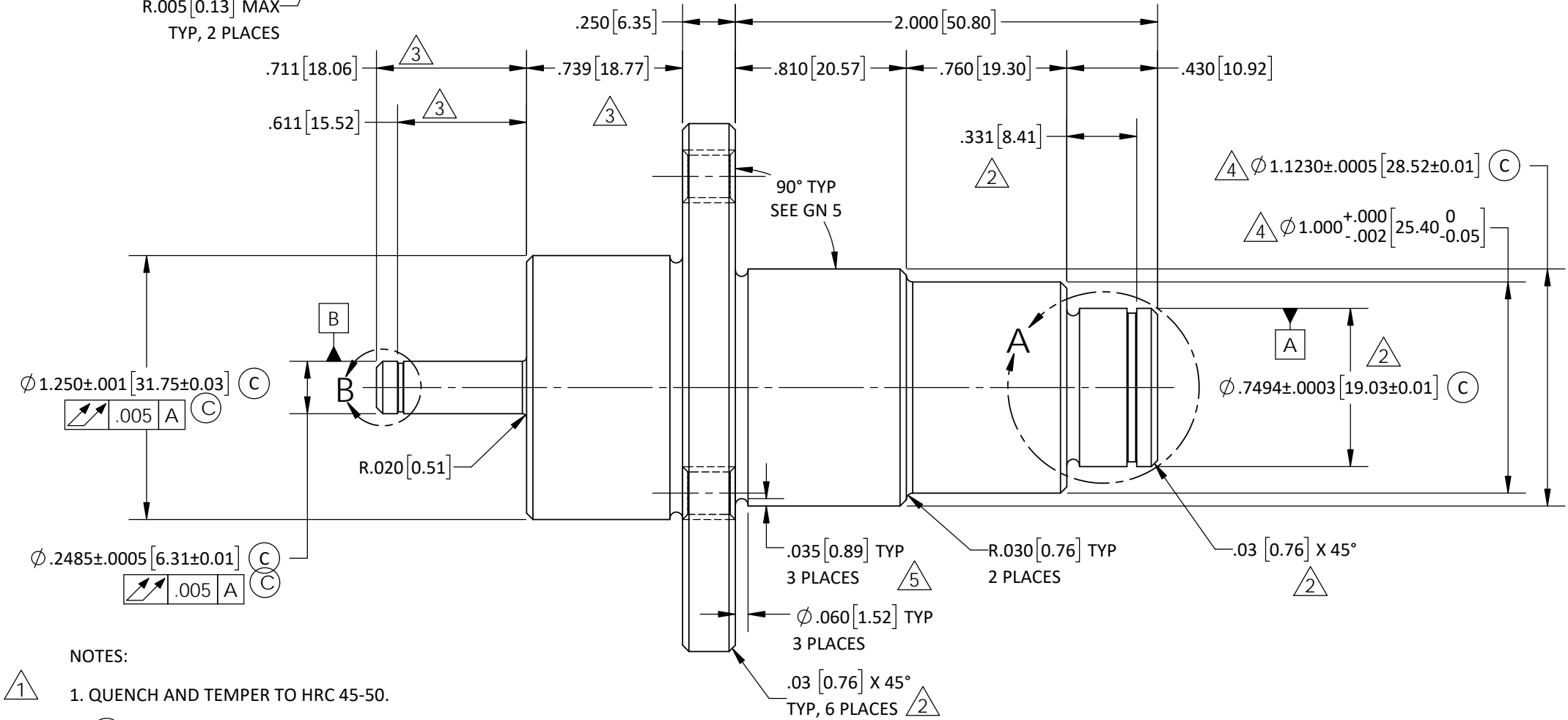
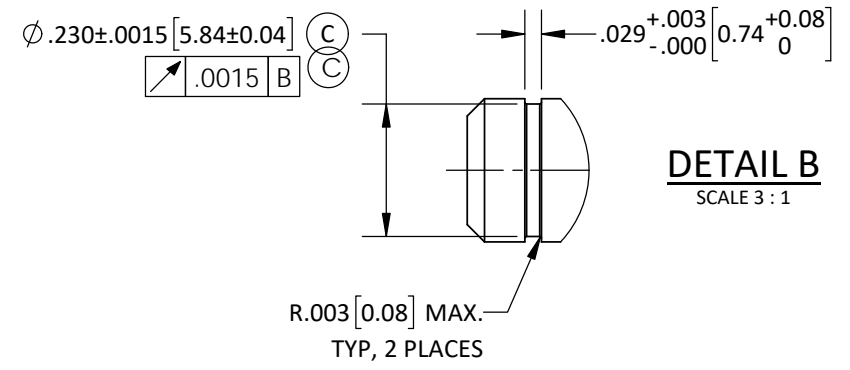


REVISIONS					
REV.	DATE	ECN #	DESCRIPTION	BY	APP'D
1	9/17/2015	PQI 11062	REVISED NOTES. ADDED GN 2, 4-TO-8.	TJF	BLB
2	4/15/2016	PQI 11062	CHG'D DIM, WAS .330-TO-.331. CHG'D CHAMFER SIZE, WAS .06-TO-.03. CHG'D QTY, WAS 5-TO-6. ADDED ±.0003 TOL	TJF	BLB
3	5/9/2017	HJ17-120	CHG'D DIMS, WAS .750-TO-.739, WAS .700-TO-.711, WAS .600-TO-.611. REM GD & T TOL. UPDATED NOTE 8	TJF	CJT
4	7/17/2017	HJ17-143	UPDATED PER CUSTOMER REV. I, Ø 1.000 TOL. WAS ±.002, Ø 1.1230 TOL. WAS ±.002	CLS	BLB
5	11/30/2022	PQI 11062	ADD RELIEF GROOVE ON Ø.75 DIAMETER	CLS	AG

**DETAIL A**  
SCALE 3:1



**DETAIL B**  
SCALE 3:1



- NOTES:
1. QUENCH AND TEMPER TO HRC 45-50.
  2. (C) - CRITICAL CHECK DIMENSIONS
  3. ALL (C) FEATURES **MUST** BE MACHINED BACK TO FINAL DIMENSIONS AFTER HEAT TREATING.
  4. SURFACE FINISHES ARE IN Ra SCALE.
  5. ALL MACHINED FEATURES **MUST** HAVE A SURFACE FINISH OF 32 MICRONS ( $\sqrt{\frac{32}{.08}}$ ) OR THE METRIC EQUIVALENT OF .08 MICROMETERS ( $\sqrt{\frac{.08}{.08}}$ ).
  6. ALL FACE TRANSITIONS **MUST** BE MACHINED TO MAKE A TRUE 90° STEP.

7. COAT FINISHED PART WITH LIGHT OIL AND PACK IN BAGS FOR SHIPMENT.
8. CUSTOMER PART #: 0061-003337-120 REV J (3) (4) (5)

THIRD ANGLE PROJECTION	TOLERANCES (EXCEPT AS NOTED) ALL DIMENSIONS ARE IN: IN/MM		THE H-J FAMILY OF COMPANIES 3010 HIGH RIDGE BLVD. HIGH RIDGE, MO. 63049 USA PHONE 1-636-677-3421 FAX 1-636-376-1915	
	DECIMAL XX = ±.01/.25mm .XXX = ±.005/.13mm		STEEL SHAFT FOR LTC	
	FRACTIONAL ±		MATERIAL AISI 4140 STEEL	
	ANGULAR ±1°		CHK'D NJS	APP'D 01/09/15
PROPRIETARY AND CONFIDENTIAL THE INFORMATION CONTAINED IN THIS DRAWING IS THE SOLE PROPERTY OF THE H-J FAMILY OF COMPANIES. ANY REPRODUCTION IN PART OR AS A WHOLE WITHOUT THE WRITTEN PERMISSION OF THE H-J FAMILY OF COMPANIES IS PROHIBITED. REMOVE ALL BURRS & SHARP EDGES		DRAWN BY CLS	DATE 01/09/2015	DRAWING NO. MH0307-001