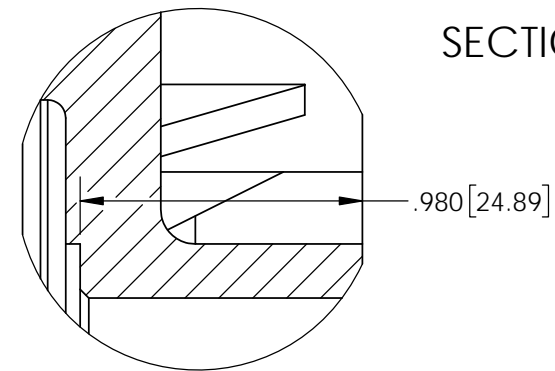
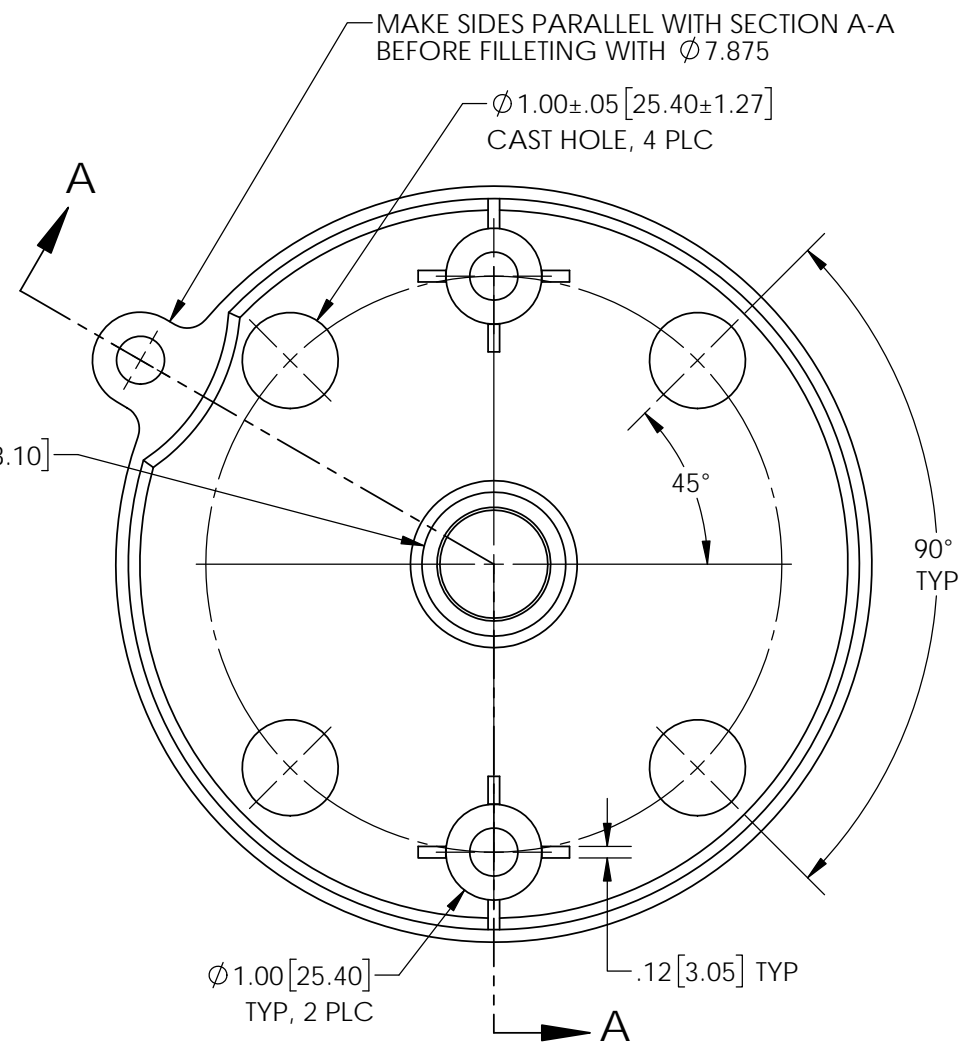
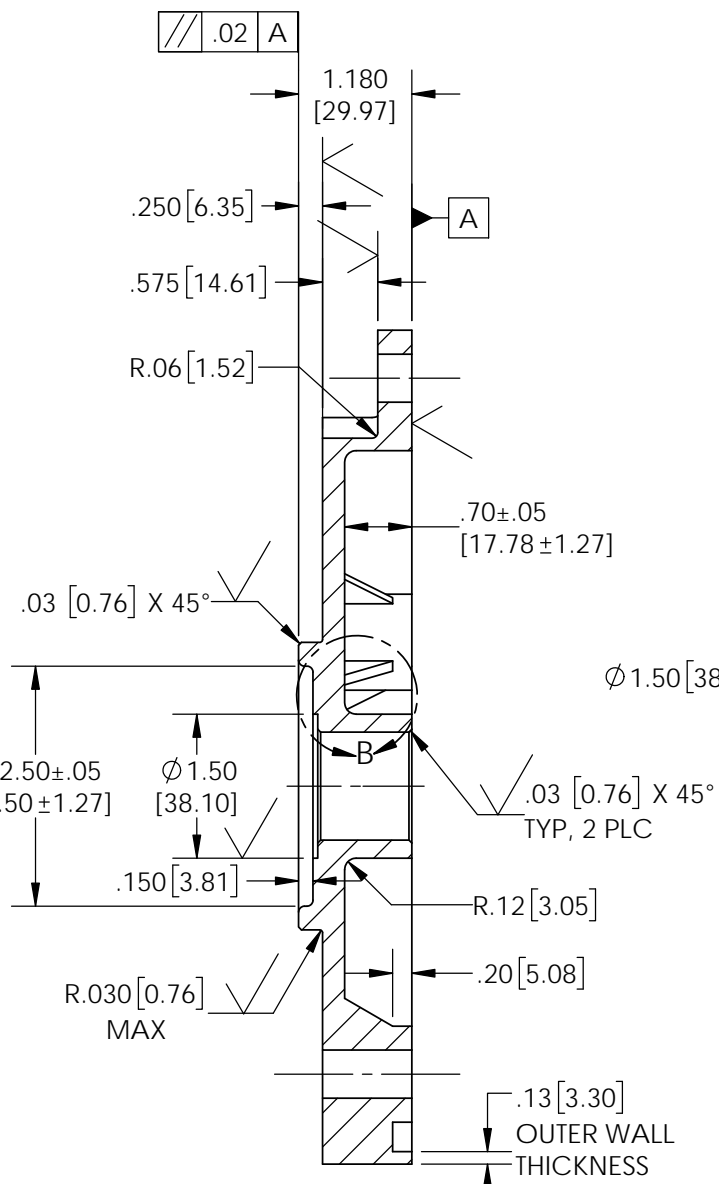
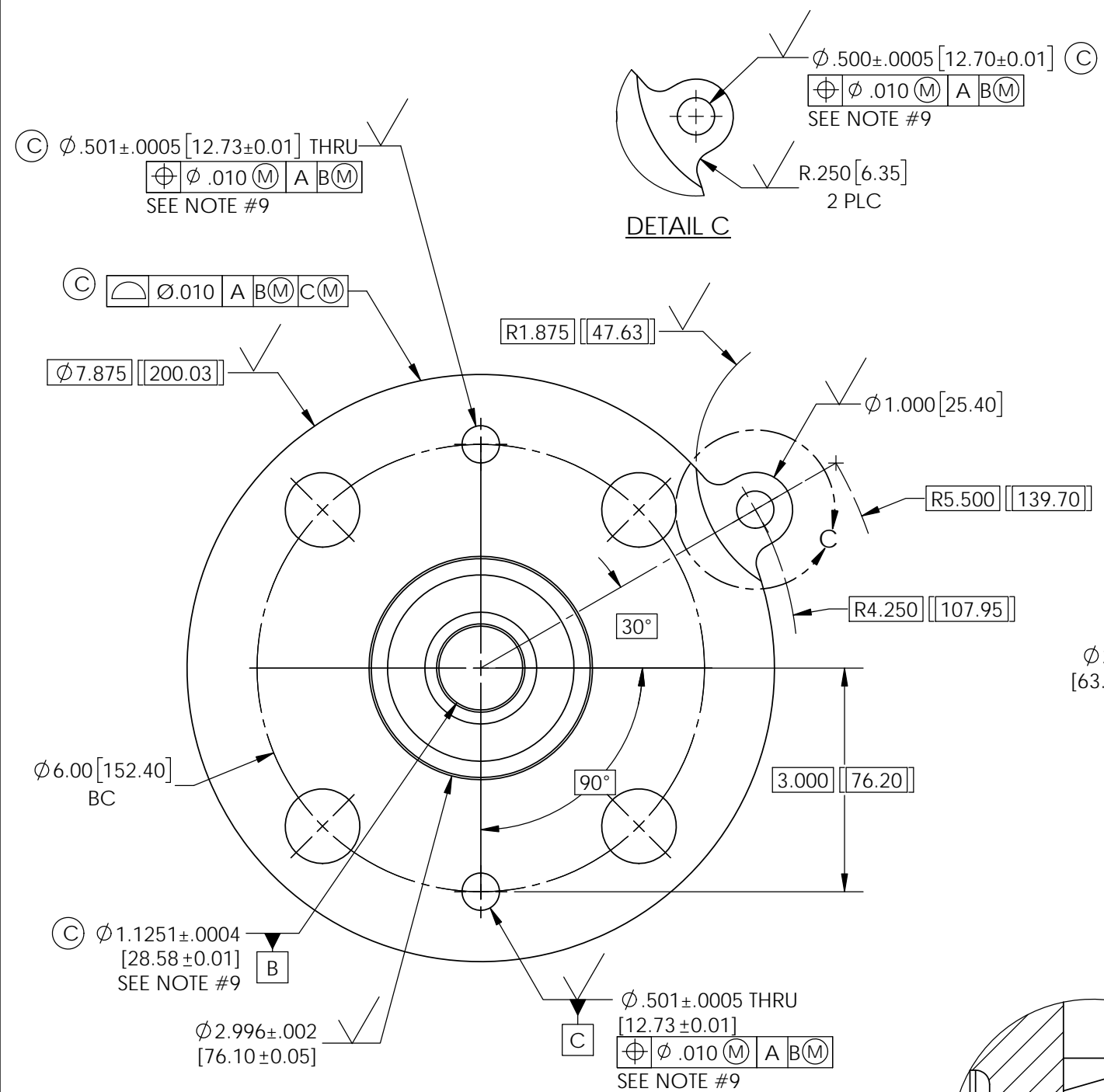


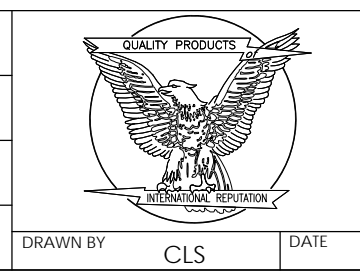
REVISIONS					
REV.	DATE	ECN #	DESCRIPTION	BY	APP'D
1	12/21/2018	HJ18-242	EDITED NOTE 8, ADDED "TOTAL"	TJF	LO



DETAIL B
SCALE 1.5 : 1

- NOTE:**
- ◆◆◆ 1. (C) - INDICATES FEATURES CRITICAL TO PART FUNCTION REQUIRING GAGING CONSIDERATIONS.
 - ◆◆◆ 2. $\sqrt{32}$ ALL INDICATED SURFACES. $\sqrt{125}$ FOR ALL OTHER MACHINED SURFACES, EXCEPT THOSE INDICATED.
 - ◆◆◆ 3. SURFACE FINISH ADDED IN Ra SCALE
 - ◆◆◆ 4. PART TO BE CAST, THEN MACHINED
 - ◆◆◆ 5. PART TO BE FREE OF DIRT, SAND, GRIT, BURRS AND METAL CHIPS.
 - ◆◆◆ 6. PACKAGE IN BAG AFTER LIGHT OIL COATING.
 - 7. CUSTOMER PART #: 0062-003337-543 REV B
 - △ 8. HEAT TREATMENT: CARBONIZE OR CARBONITRIDE TO A TOTAL CASE DEPTH OF .015"-TO-.030". TEMPER TO R15N 88-90.
 - 9. DIMENSION APPLIES AFTER HEAT TREATMENT

THIRD ANGLE PROJECTION	TOLERANCES (EXCEPT AS NOTED)
	DECIMAL XX = ±.030/.76mm XXX = ±.005/.13mm
	FRACTIONAL ±
	ANGULAR ±1°
REMOVE ALL BURRS & SHARP EDGES	



H-J ENTERPRISES, INC. 3010 HIGH RIDGE BLVD. HIGH RIDGE, MO. 63049 USA PHONE 1-636-677-3421 FAX 1-636-376-1915			
GENEVA MOUNTING HUB FOR LTC			
MATERIAL	ASTM A27 GRADE 70-40 CAST CARBON STEEL		
CHK'D NJS	APP'D 04/10/15	DRAWING NO. MH0304-002	
DRAWN BY CLS	DATE 01/07/2015	SCALE N.T.S.	