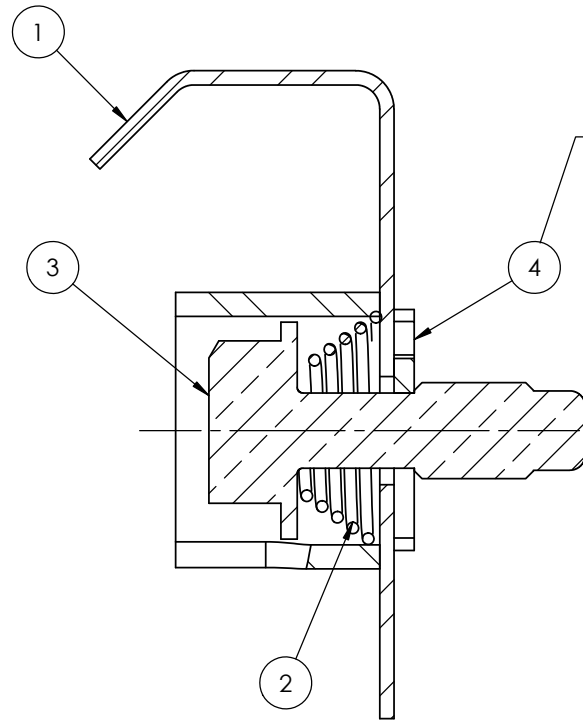
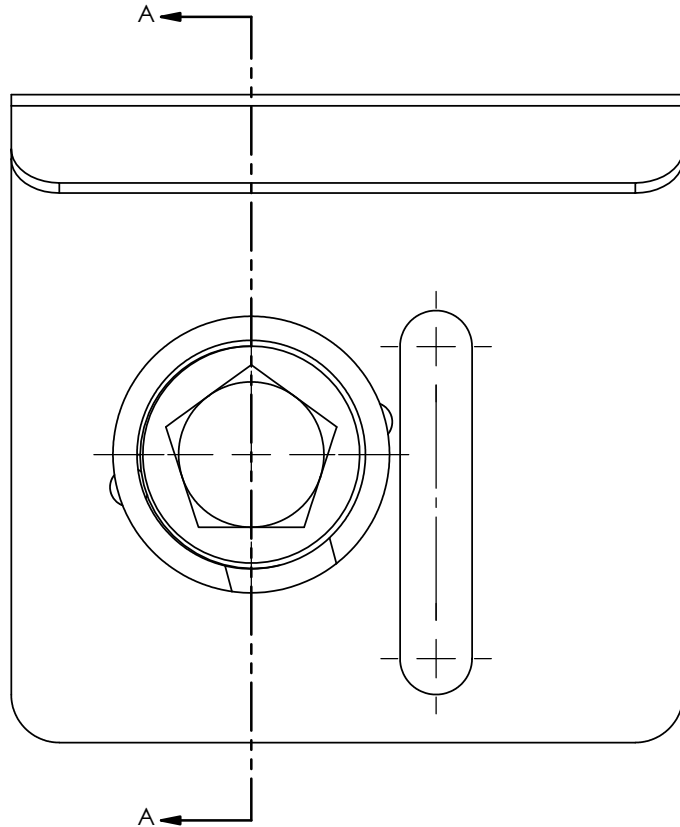


ITEM NO.	PART NUMBER	DESCRIPTION	Material	QTY.
1	MH0199-005 DLTA	DOOR LATCH TAB ASSEMBLY	304 STAINLESS STEEL	1
2	MH0199-005 SBS	SECURITY BOLT SPRING	Ø.060" STAINLESS STEEL	1
3	MH0199-007 PHLB	PENTA HEAD LATCH BOLT	C65100 SILICON BRONZE	1
4	MH0199-007 SRC	SPLIT RETAINING CLIP	304 STAINLESS STEEL	1

REVISIONS					
REV.	DATE	ECN #	DESCRIPTION	BY	APPROVED
1	2/28/2018	PQI# 17287	QUOTED AS "17287LN04"	CLS	

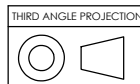


CRIMP TO PREVENT REMOVAL OF BOLT AFTER INSTALLING IN DOOR LATCH TAB. AFTER CRIMPING, THE RETAINING CLIP MUST MOVE FREELY ON UN-THREADED SECTION OF BOLT SHANK.

SECTION A-A

NOTE:

- ITEM 1 HAS A BLACK POWDER COAT FINISH COMPLIANT WITH C57.12.28.5.5.1 CROSS HATCH ADHESION TEST.



THIRD ANGLE PROJECTION

TOLERANCES (EXCEPT AS NOTED)

DECIMAL

± .032"/.8mm

FRACTIONAL

±

ANGULAR

± 2 Degrees

PROPRIETARY AND CONFIDENTIAL

THE INFORMATION CONTAINED IN THIS DRAWING IS THE SOLE PROPERTY OF H-J INTERNATIONAL, INC. ANY REPRODUCTION IN PART OR AS A WHOLE WITHOUT THE WRITTEN PERMISSION OF H-J INTERNATIONAL, INC. IS PROHIBITED.



DRAWN BY

CLS

DATE

02/28/2018

SCALE

N.T.S.

H - J INTERNATIONAL, INC.

3010 HIGH RIDGE BLVD. HIGH RIDGE, MO. 63049 USA
PHONE 1-636-677-3421 FAX 1-636-376-1915

PAD LOCK BOLTING ASSEMBLY

MATERIAL

SEE DRAWING

CHK'D

-

APP'D

-

DRAWING NO.

MH0199-007