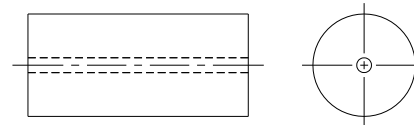


NOTES:

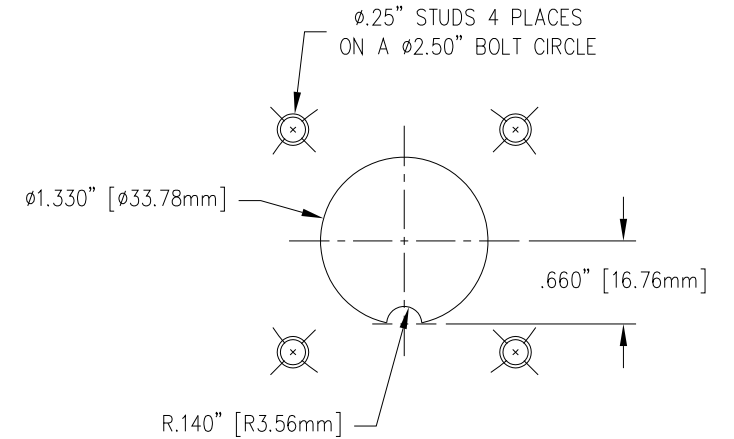
1. FLOAT WILL BE INSTALLED BY CUSTOMER TO THEIR REQUIRED HEIGHT.
2. USE INSTALLATION TOOL MH0050-001 TO INSTALL PUSH NUTS AND FLOAT. REFER TO DRAWING INT005-003ILL FOR INSTALLATION INSTRUCTIONS.



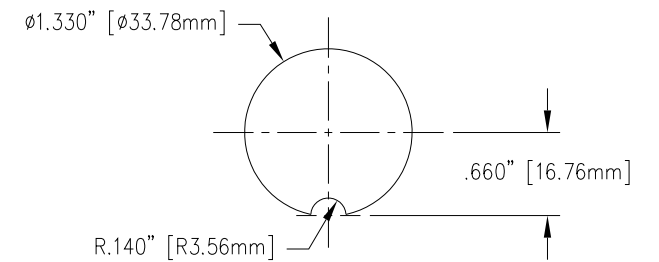
STEEL PUSH NUT
QUANTITY = 3



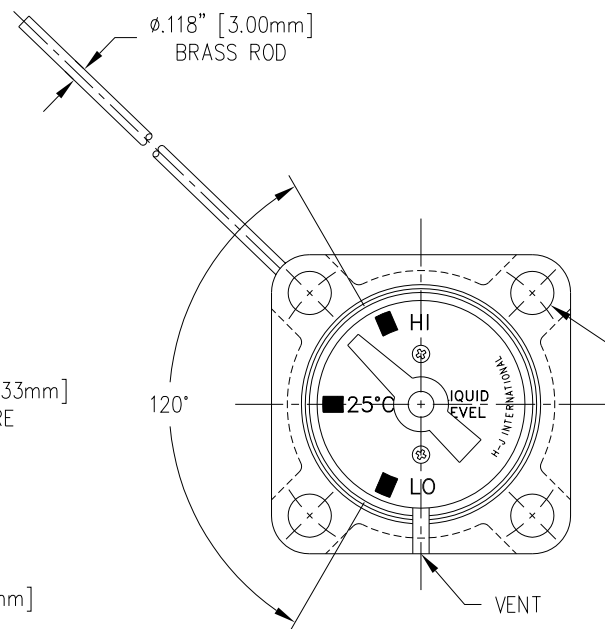
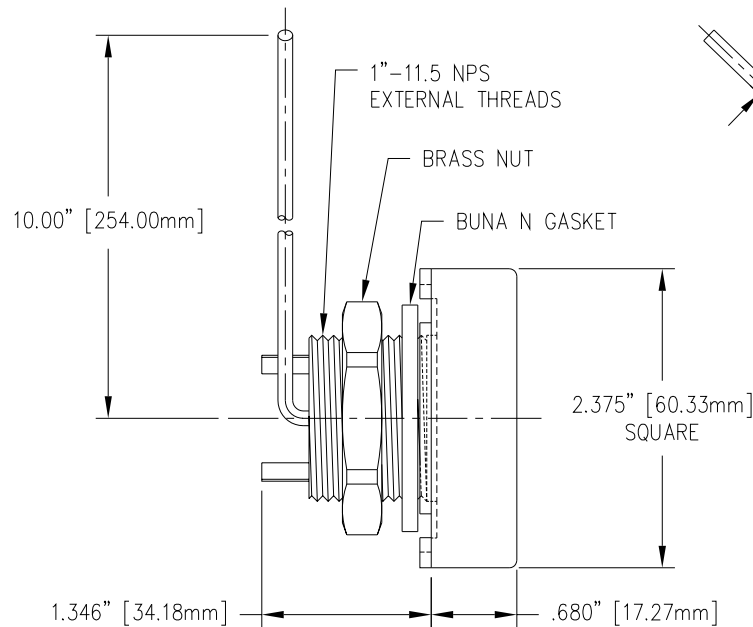
THERMOPLASTIC FLOAT
Ø.813" X 1.75"
QUANTITY = 1



TANK HOLE DIMENSION
(EXTERNAL MOUNTING)



TANK HOLE DIMENSION
(INTERNAL MOUNTING)



Ø.343" [Ø8.71mm]
THRU HOLE 4 PLACES
ON A Ø2.500" BOLT CIRCLE

| REVISIONS | | | | | |
|-----------|------|-------|---------|----|-------|
| NO. | DATE | ECN # | REMARKS | BY | APPD. |
| | | | | | |

TOLERANCES
(EXCEPT AS NOTED)

DECIMAL
± .032" / .8mm

FRACTIONAL
±

ANGULAR
± 2°



H-J INTERNATIONAL, INC.
3010 HIGH RIDGE BLVD. HIGH RIDGE, MO. 63049 USA
PHONE 1-636-677-3421 FAX 1-636-376-1915

**LIQUID LEVEL GAUGE ASSEMBLY
WITH ADJUSTABLE FLOAT HEIGHT**

MATERIAL ALUMINUM

CHK'D

APP'D

DRAWING NO.

DRAWN BY CJT

DATE

3-27-03

SCALE

N.T.S.

INT005-003