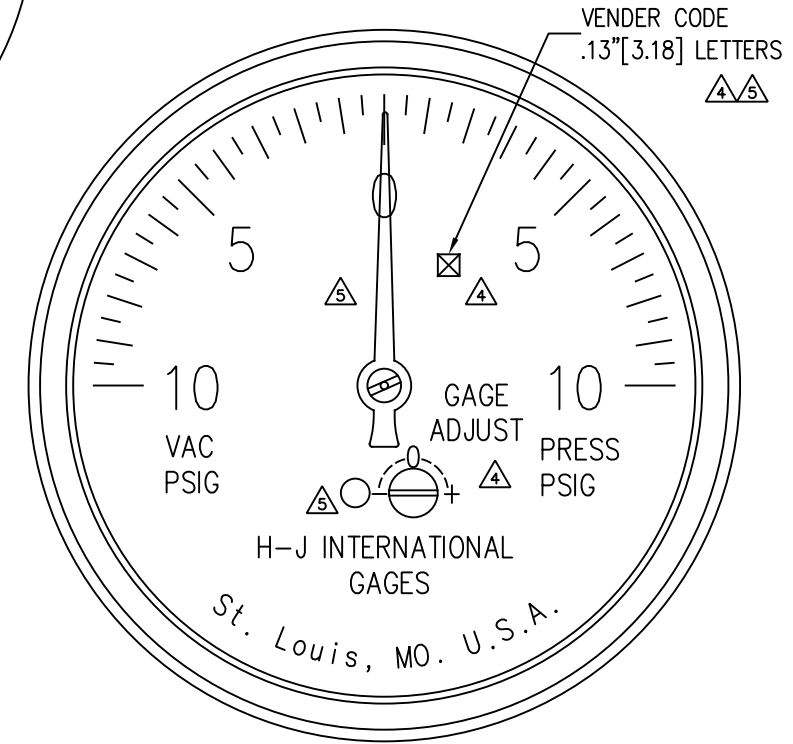
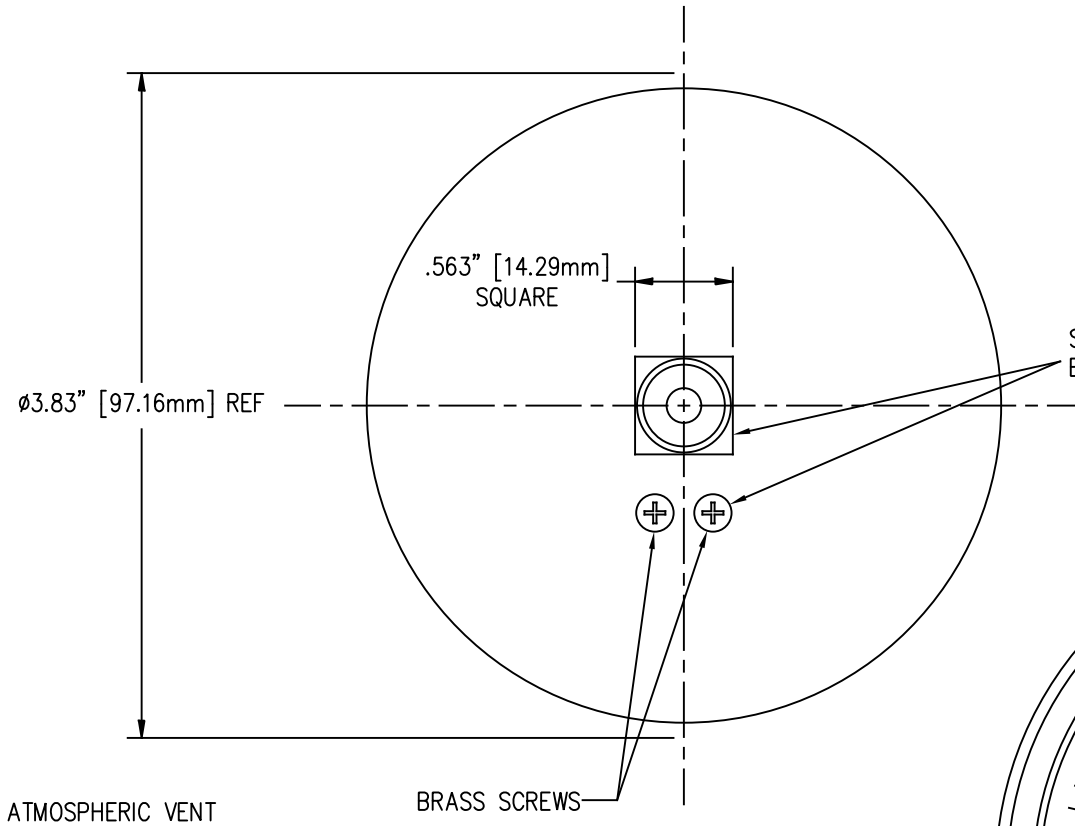
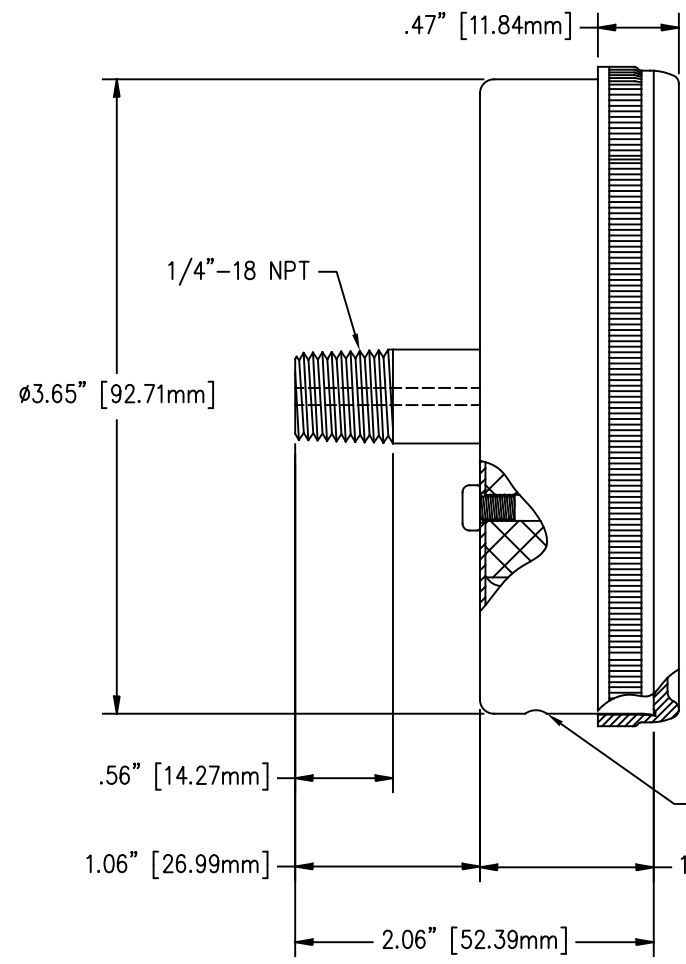


REVISIONS					
NO.	DATE	ECN#	REMARKS	BY	APPD.
①	6-2-09	HJ09-108	DRAWING CREATED FOR "STAINLESS" VERSION	SMM	JS
②	11-22-10	HJ10-183	LENS MATERIAL WAS: ACRYLIC, REMOVABLE STYLE	JH	JFS
③	07-02-12	HJ12-121	ADDED NOTE THAT GAGE IS GOOD INDOORS AND OUTDOORS	CLS	JFS
④	9/17/2019	HJ19-149	ADDED GAUGE ADJUSTMENT TEXT. ADDED VENDOR CODE	TJF	LO
⑤	10/14/2019	HJ19-169	REM NOTE. ROTATED POINTER TO ZERO. CHG'D BRASS SCREW TO RIVET	TJF	LO



- NOTES:
- ① DIAL: ALUMINUM, PAINTED BLACK WITH WHITE NUMERALS
 - ② POINTER: ALUMINUM, ADJUSTABLE, PAINTED WHITE
 - ③ CASE: 304 STAINLESS STEEL - BUFFED OR POLISHED FINISH WITH ATMOSPHERIC VENT
 - ④ LENS: UV STABILIZED POLYCARBONATE
 - ACCURACY: 3%-2%-3%
 - TUBE, SOCKET & MOVEMENT: BRASS
 - CONNECTION: 1/4-18NPT BACK, SEALED WITH WEATHER RESISTANT SILICONE
 - ⑤ GAGE CAN BE USED FOR INDOR AND OUTDOOR APPLICATIONS
 - ④ VENDER CODE: .13"[3.18mm] LETTERS

TOLERANCES (EXCEPT AS NOTED) DECIMAL $\pm .032$ " / .8mm FRACTIONAL \pm ANGULAR $\pm 2'$		H-J INTERNATIONAL, INC. 3010 HIGH RIDGE BLVD. HIGH RIDGE, MO. 63049 USA PHONE 1-636-677-3421 FAX 1-636-376-1915	
		PRESSURE VACUUM GAGE 10 PSIG	
		MATERIAL (SEE NOTES)	
		DRAWN BY SMM	DATE 6-2-09