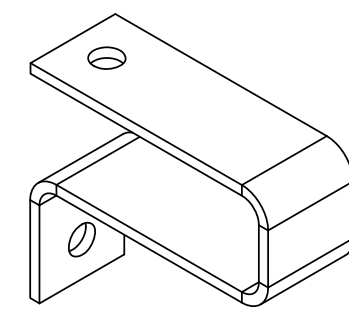
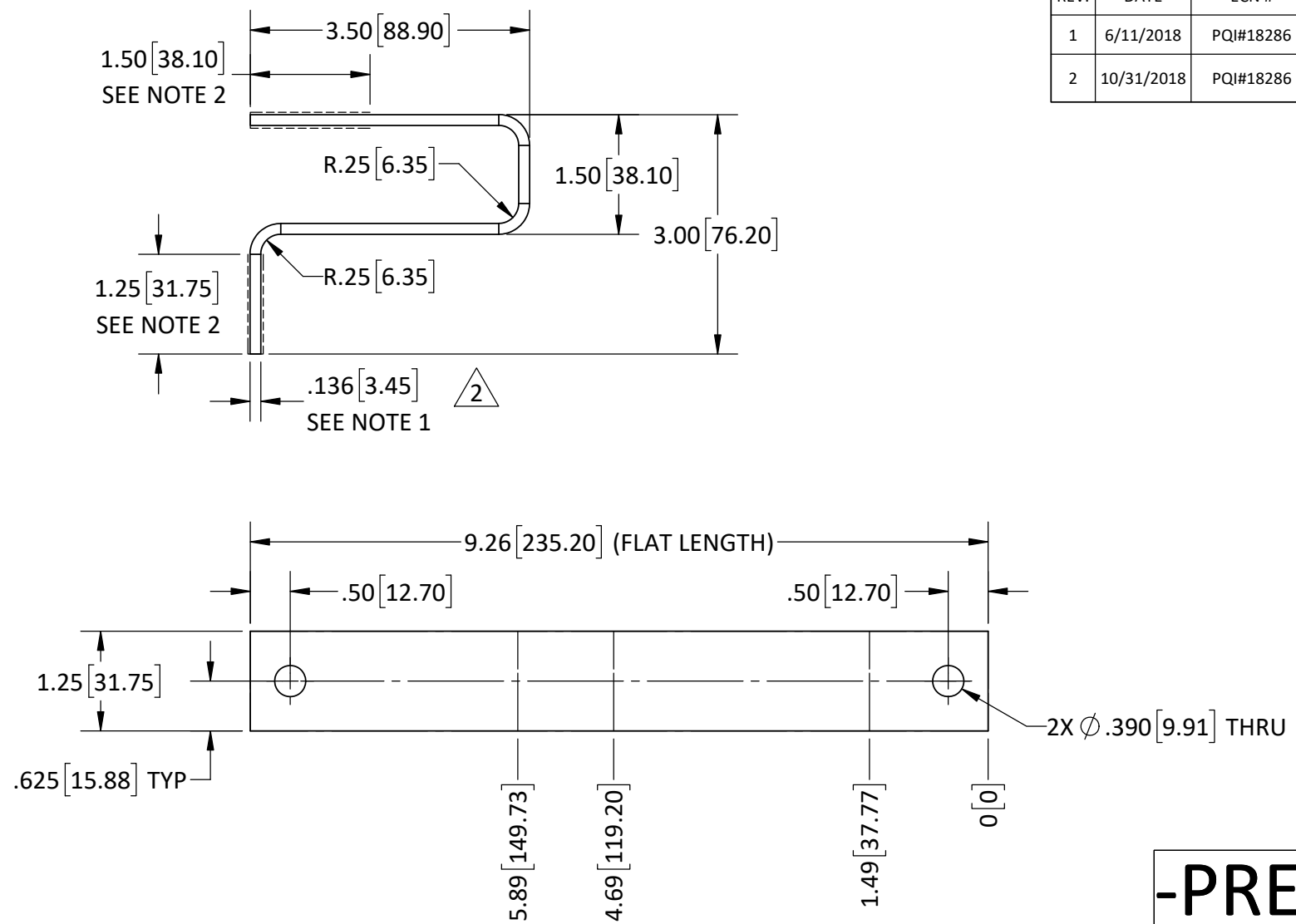


REVISIONS

REV.	DATE	ECN #	DESCRIPTION	BY	APP'D
1	6/11/2018	PQI#18286	PART # WAS 18286LN01	TJF	CS
2	10/31/2018	PQI#18286	EDITED NOTE 1 , LAMINATION THICKNESS WAS .003-TO-.004. CHG PART THICKNESS, WAS .132-TO-.136	TJF	



-PRELIMINARY-

- NOTE:**
1. TO BE MADE FROM .004" [.10mm] THK LAMINATIONS
 2. SILVER PLATE CONTACT SURFACE 0.0005" THK
 3. ALL BEND ANGLES ARE 90°
 4. CUSTOMER DRAWING FR-000-003-041

<p>THIRD ANGLE PROJECTION</p>	<p>TOLERANCES (EXCEPT AS NOTED) ALL DIMENSIONS ARE IN: in/mm</p>		<p>H - J ENTERPRISES, INC. 3010 HIGH RIDGE BLVD. HIGH RIDGE, MO. 63049 USA PHONE 1-636-677-3421 FAX 1-636-376-1915</p>	
	<p>DECIMAL .X = ±.06"/1.52mm .XX = ±.03"/.76mm .XXX = ±.01"/.25mm</p>		<p>CONNECTOR, 1.25"W X 9.26"LG</p>	
<p>PROPRIETARY AND CONFIDENTIAL THE INFORMATION CONTAINED IN THIS DRAWING IS THE SOLE PROPERTY OF H-J ENTERPRISES, INC. ANY REPRODUCTION IN PART OR AS A WHOLE WITHOUT THE WRITTEN PERMISSION OF H-J ENTERPRISES, INC. IS PROHIBITED.</p>	<p>FRACTIONAL ±</p>	<p>MATERIAL COPPER - C11000 OR EQUIV - SILVER PLATED (AS SHOWN)</p>	<p>CHK'D</p>	<p>APP'D</p>
<p>ANGULAR ±1°</p>	<p>REMOVE ALL BURRS & SHARP EDGES</p>	<p>DRAWN BY TJF</p>	<p>DATE 6/11/2018</p>	<p>SCALE N.T.S.</p>
			<p>DRAWING NO. FLEX0170-001</p>	

1