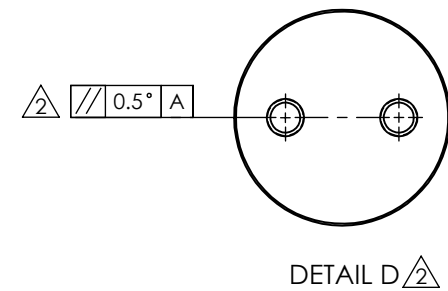
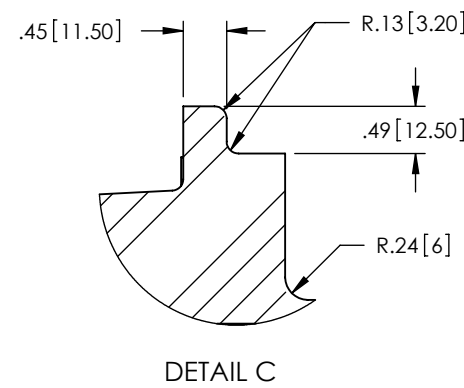
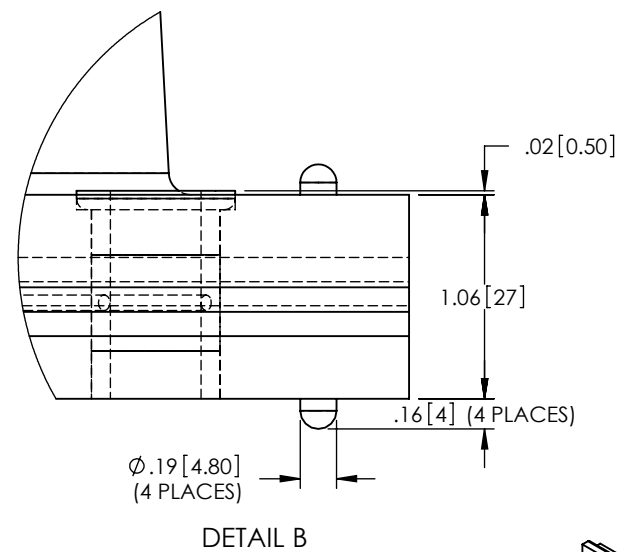
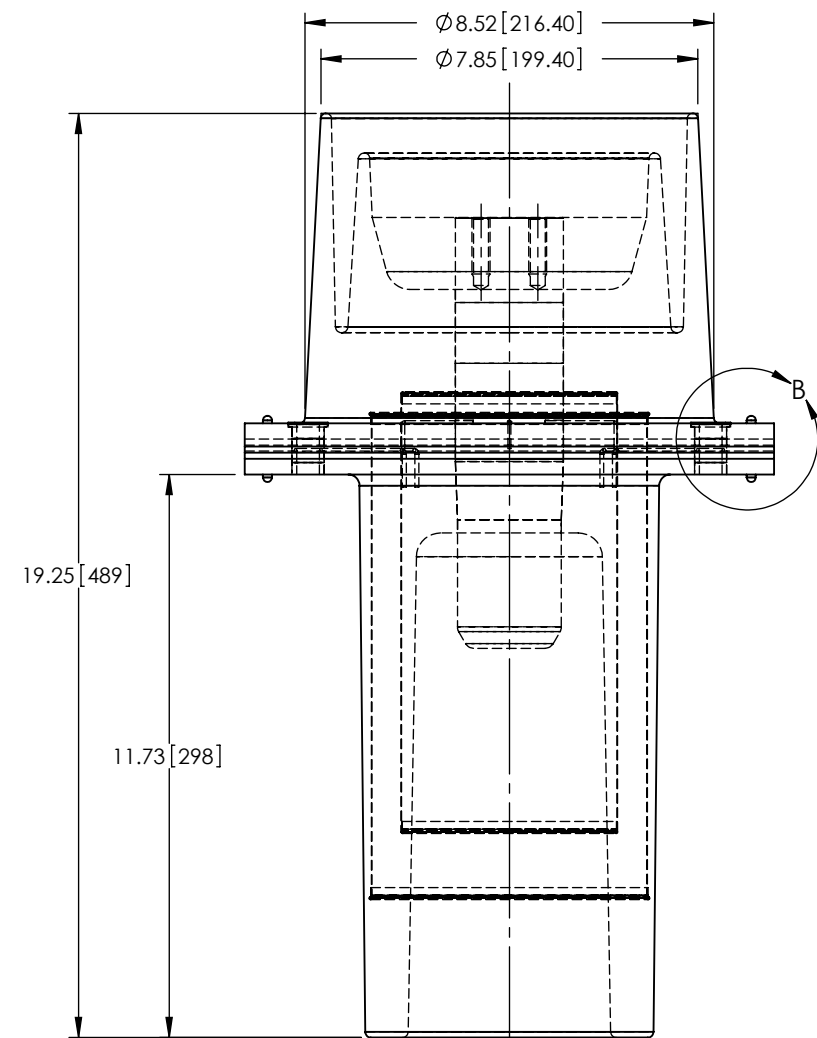
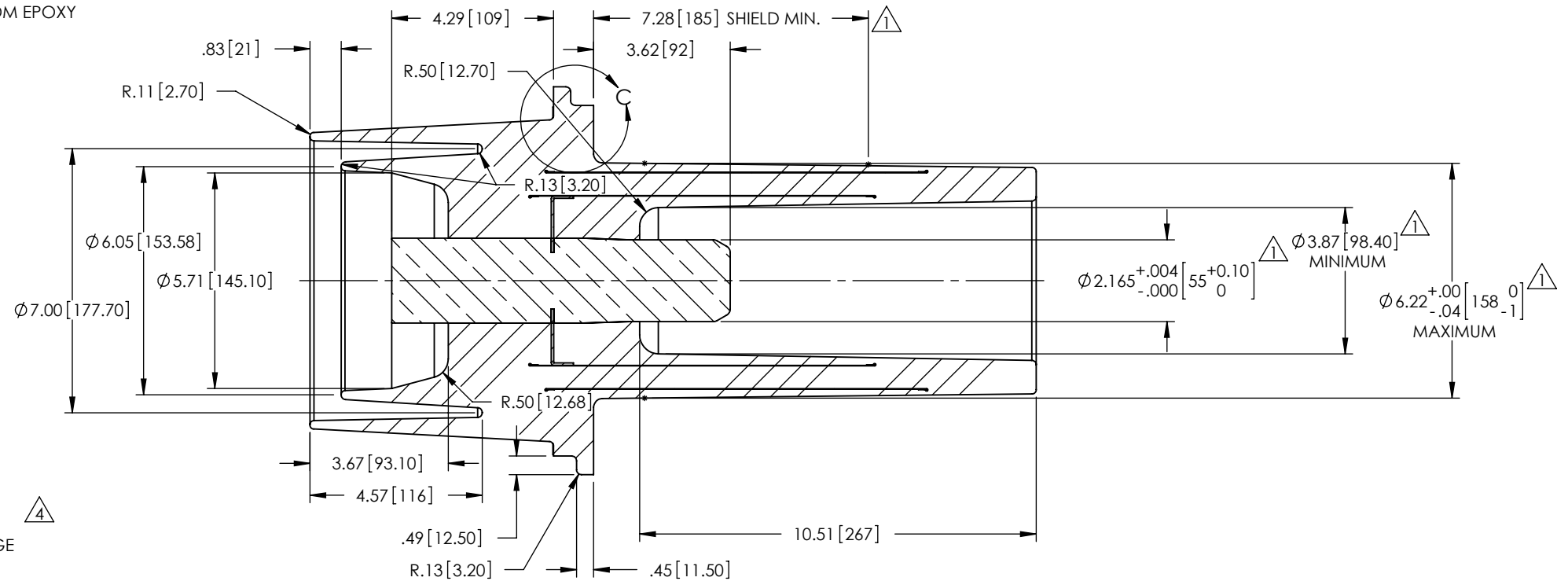
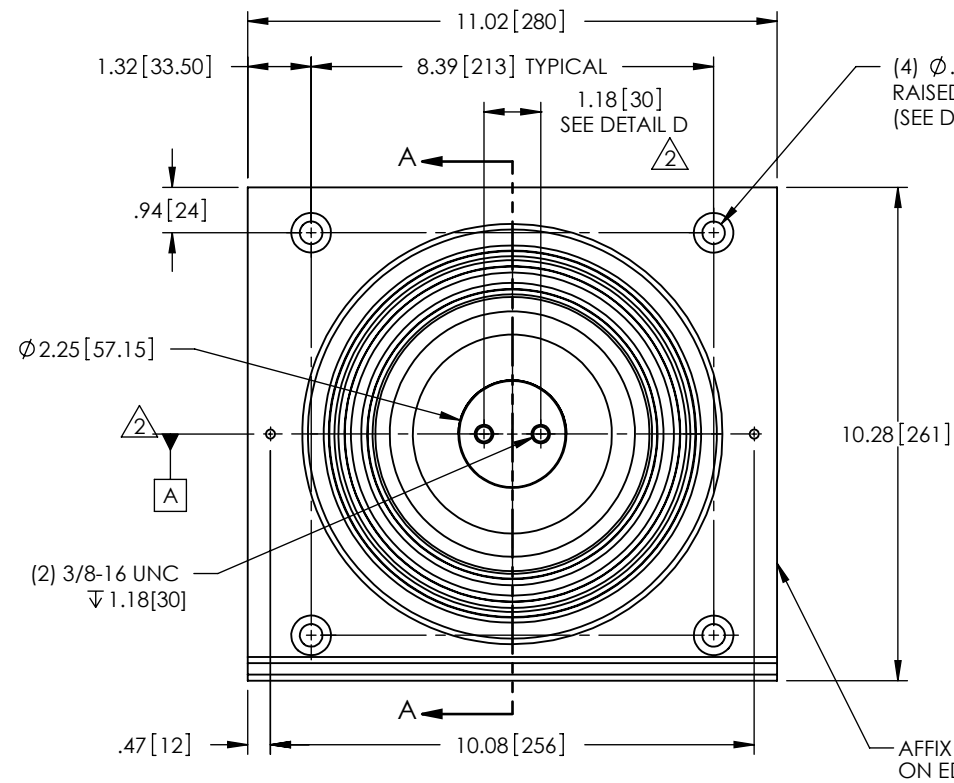


| REVISIONS | | | | | |
|-----------|------------|----------|--|-----|----------|
| REV. | DATE | ECN # | DESCRIPTION | BY | APPROVED |
| 1 | 8/20/2009 | | ADDED & EDITED DIMS.; ADDED "MIN." TO SHIELD DIM.; REVISED STUD MATERIAL NOTE. | JH | |
| 2 | 8/25/2009 | | ADDED DATUM, DETAIL D, & TOLERANCE. | JH | |
| 3 | 11/20/2009 | HJ09-189 | ADDED SPECIFICATION #7. | JH | JFS |
| 4 | 12/18/2009 | HJ09-205 | ADDED NOTE | JAM | JFS |
| 5 | 2/15/2010 | HJ10-026 | REMOVED SPECIFICATION #7; ADDED "(SUITABLE FOR -5°C TO +105°C)" | JH | JFS |

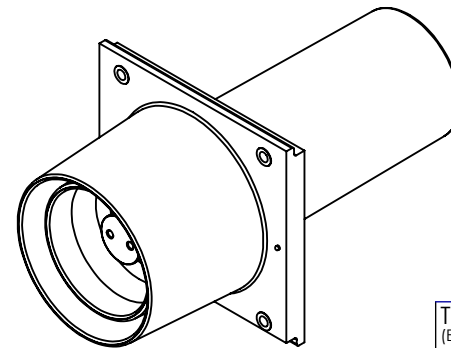


- NOTES:
1. ALL CONTACT SURFACES TO BE CLEAN & FREE FROM FLASH.
 2. CREEP DISTANCE: 20.47" [520mm] MINIMUM
 3. FILLETS & ROUNDS R.12" [3mm] UNLESS OTHERWISE SPECIFIED.

MATERIAL:

- EPOXY - E07 - CYCLOALIPHATIC, GRAY (SUITABLE FOR -5°C TO +105°C) ∇
- STUD - C11000 COPPER - SILVER PLATED (10 MICRONS) OVER NICKEL ∇
- PLATING (1 μ m - MINIMUM) PER ASTM B700
- INSERTS - C36000 FREE CUTTING BRASS

- SPECIFICATIONS:
1. TESTED IN ACCORDANCE WITH.....IEC 60137-2008
 2. PARTIAL DISCHARGE REQUIREMENTS.....<5pC @ 16.4kV, <10pC @ 23.4kV
 3. POWER FREQUENCY WITHSTAND.....60kV (60 sec.)
 4. BASIC IMPULSE LEVEL.....125kV
 5. CONTINUOUS CURRENT RATING.....800/1600A
 6. APPROXIMATE WEIGHT.....44.3 lbs (20.1 kg)



PROPRIETARY AND CONFIDENTIAL
 THE INFORMATION CONTAINED IN THIS DRAWING IS THE SOLE PROPERTY OF H-J ENTERPRISES, INC. ANY REPRODUCTION IN PART OR AS A WHOLE WITHOUT THE WRITTEN PERMISSION OF H-J ENTERPRISES, INC. IS PROHIBITED.

| TOLERANCES (EXCEPT AS NOTED) | |
|------------------------------|-------------------|
| DECIMAL | \pm .050 [1.27] |
| FRACTION | |
| ANGULAR | \pm 1° |



H-J ENTERPRISES, INC.
 3010 HIGH RIDGE BLVD. HIGH RIDGE, MO. 63049 USA
 PHONE 1-636-677-3421 FAX 1-636-376-1915

27kV/125kV BIL 800/1600A BUSHING ASSEMBLY

MATERIAL (SEE DRAWING)

CHK'D

APP'D

DRAWING NO.

81-004-000

DRAWN BY JH

DATE 8/11/2009

SCALE N.T.S.