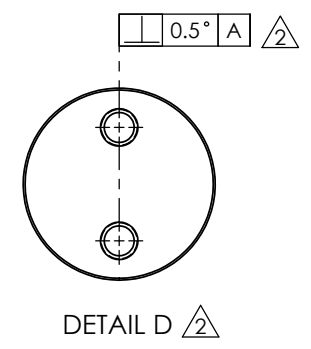
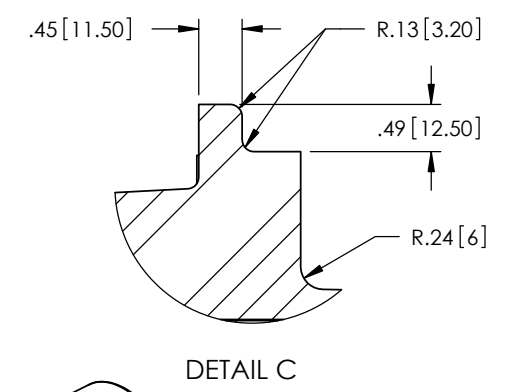
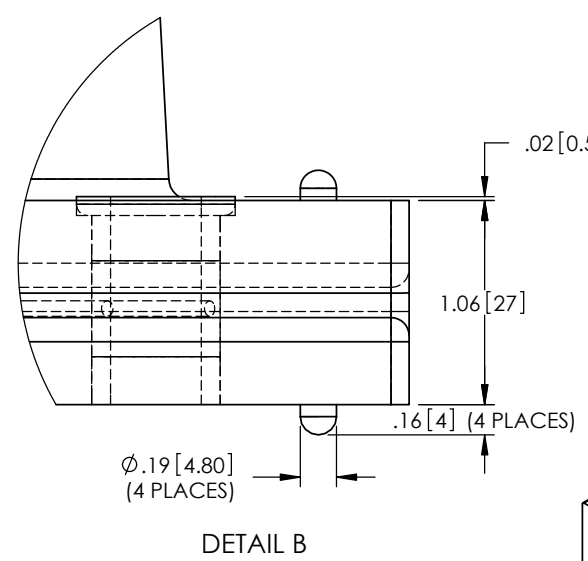
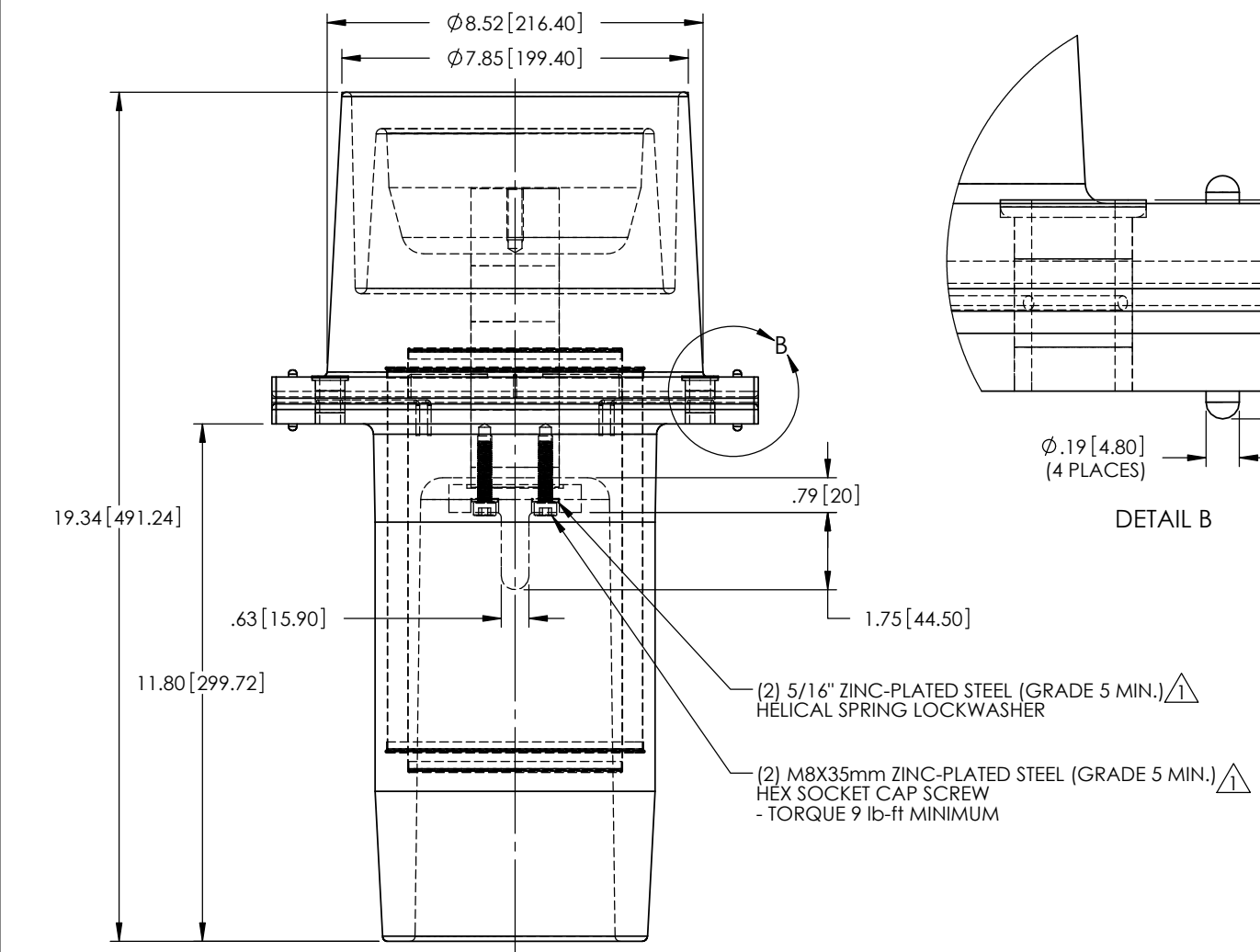
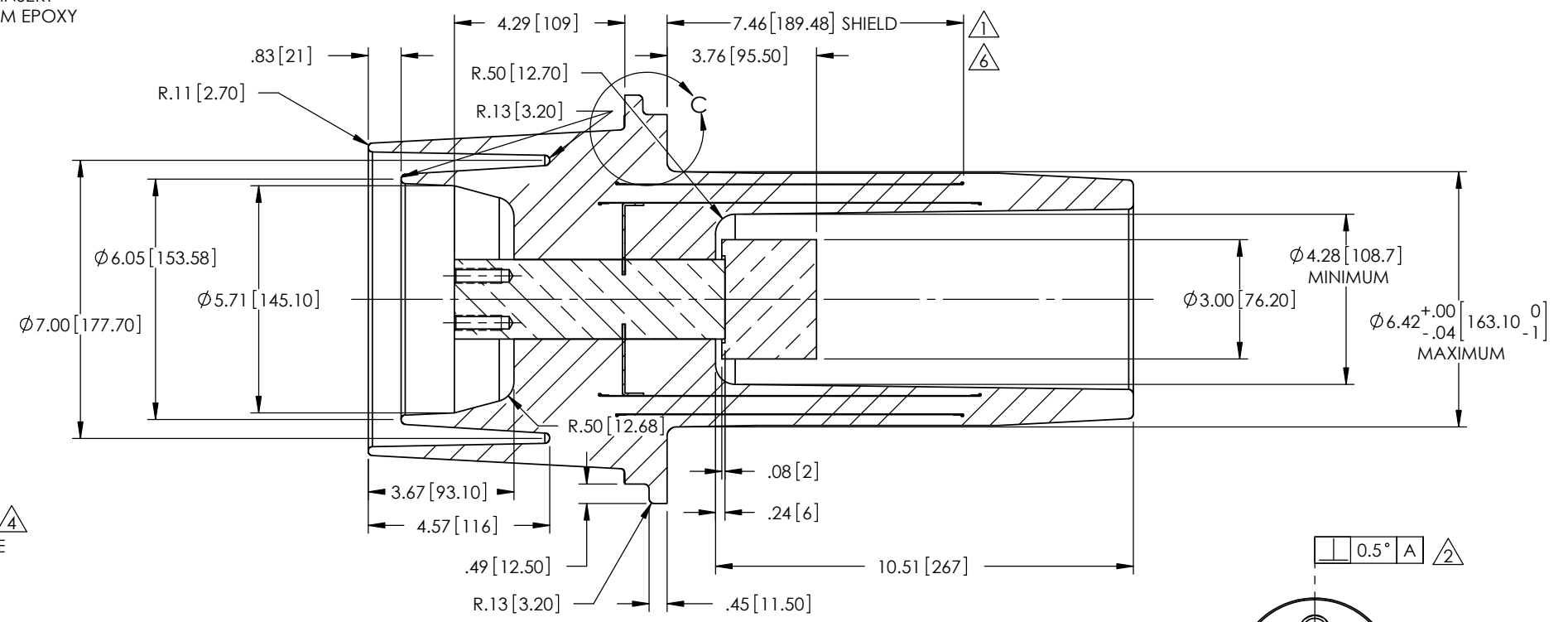
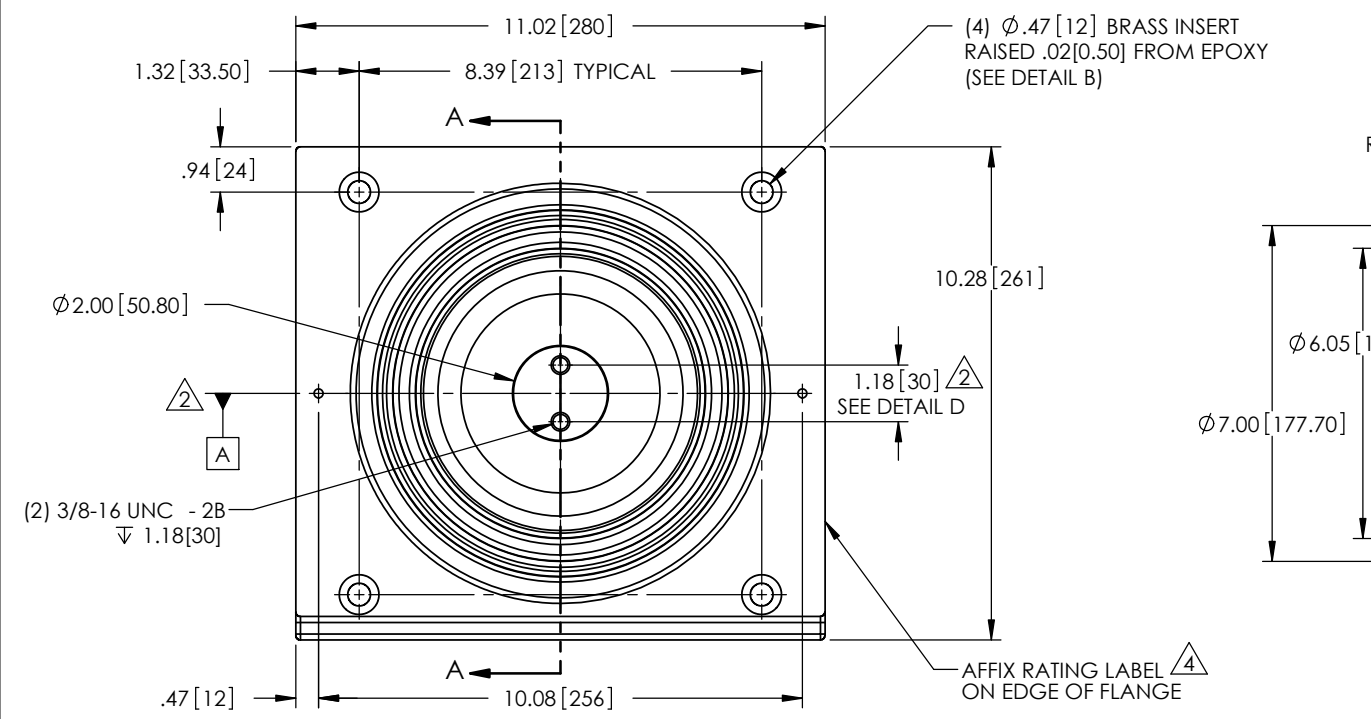


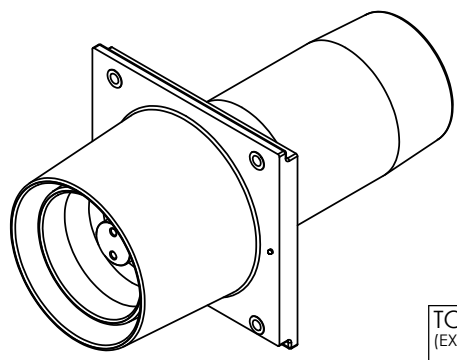
REVISIONS					
REV.	DATE	ECN #	DESCRIPTION	BY	APPROVED
1	8/20/2009		ADDED "GRADE 5 MIN." TO HARDWARE NOTES; ADDED "MIN." TO SHIELD DIM; REVISED STUD MATERIAL NOTE.	JH	
2	8/25/2009		ADDED DATUM, DETAIL D, & TOLERANCE.	JH	
3	11/20/2009	HJ09-189	19.34" WAS 19.25"; 11.80" WAS 11.73"; ADDED SPECIFICATION #7.	JH	JFS
4	12/18/2009	HJ09-205	ADDED NOTE	JAM	JFS
5	2/15/2010	HJ10-026	REMOVED SPECIFICATION #7; ADDED "(SUITABLE FOR -5 °C TO +105 °C)"	JH	JFS
6	2/10/2017	HJ17-041	REVISED HIGH VOLTAGE AND GROUND STRESS SHIELD LENGTHS, UPDATED SHANK OUTER PROFILE	CLS	BLB



NOTES:
 1. ALL CONTACT SURFACES TO BE CLEAN & FREE FROM FLASH.
 2. CREEP DISTANCE: 20.47" [520mm] MINIMUM
 3. FILLETS & ROUNDS R.12" [3mm] UNLESS OTHERWISE SPECIFIED.

MATERIAL:
 EPOXY - E07 - CYCLOALIPHATIC, GRAY (SUITABLE FOR -5 °C TO +105 °C)
 STUD - C11000 COPPER - SILVER PLATED (10 MICRONS) OVER NICKEL
 PLATING (1 μ m - MINIMUM) PER ASTM B700
 INSERTS - C36000 FREE CUTTING BRASS

SPECIFICATIONS:
 1. TESTED IN ACCORDANCE WITH.....IEC 60137-2008
 2. PARTIAL DISCHARGE REQUIREMENTS.....<5pC @ 16.4kV, <10pC @ 23.4kV
 3. POWER FREQUENCY WITHSTAND.....60kV (60 sec.)
 4. BASIC IMPULSE LEVEL.....125kV
 5. CONTINUOUS CURRENT RATING.....1200A
 6. APPROXIMATE WEIGHT.....41.7 lbs (18.9 kg)



PROPRIETARY AND CONFIDENTIAL
 THE INFORMATION CONTAINED IN THIS DRAWING IS THE SOLE PROPERTY OF H-J ENTERPRISES, INC. ANY REPRODUCTION IN PART OR AS A WHOLE WITHOUT THE WRITTEN PERMISSION OF H-J ENTERPRISES, INC. IS PROHIBITED.

TOLERANCES (EXCEPT AS NOTED)	
DECIMAL	$\pm .050$ [1.27]
FRACTION	
ANGULAR	$\pm 1^\circ$

H-J ENTERPRISES, INC. QUALITY PRODUCTS INTERNATIONAL REPUTATION

DRAWN BY JH DATE 8/11/2009 SCALE N.T.S.

H-J ENTERPRISES, INC.
 3010 HIGH RIDGE BLVD. HIGH RIDGE, MO. 63049 USA
 PHONE 1-636-677-3421 FAX 1-636-376-1915

27kV/125kV BIL 1200A BUSHING ASSEMBLY

MATERIAL (SEE DRAWING)

CHK'D APP'D DRAWING NO. 81-003-000