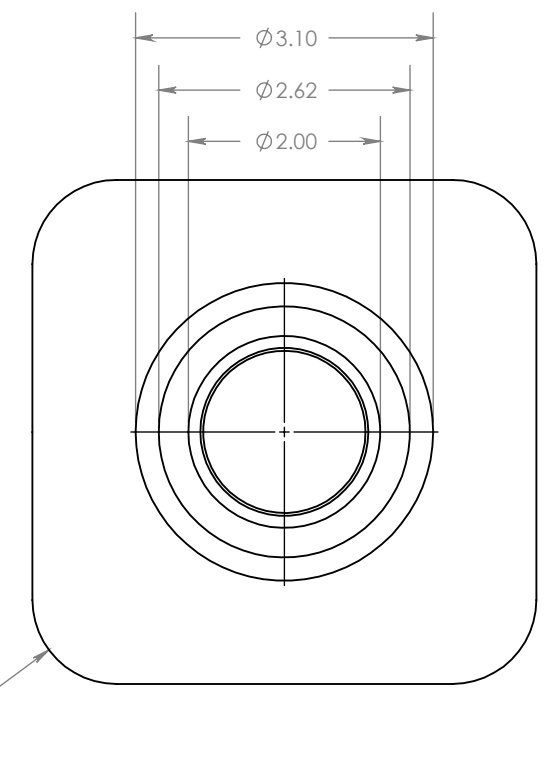
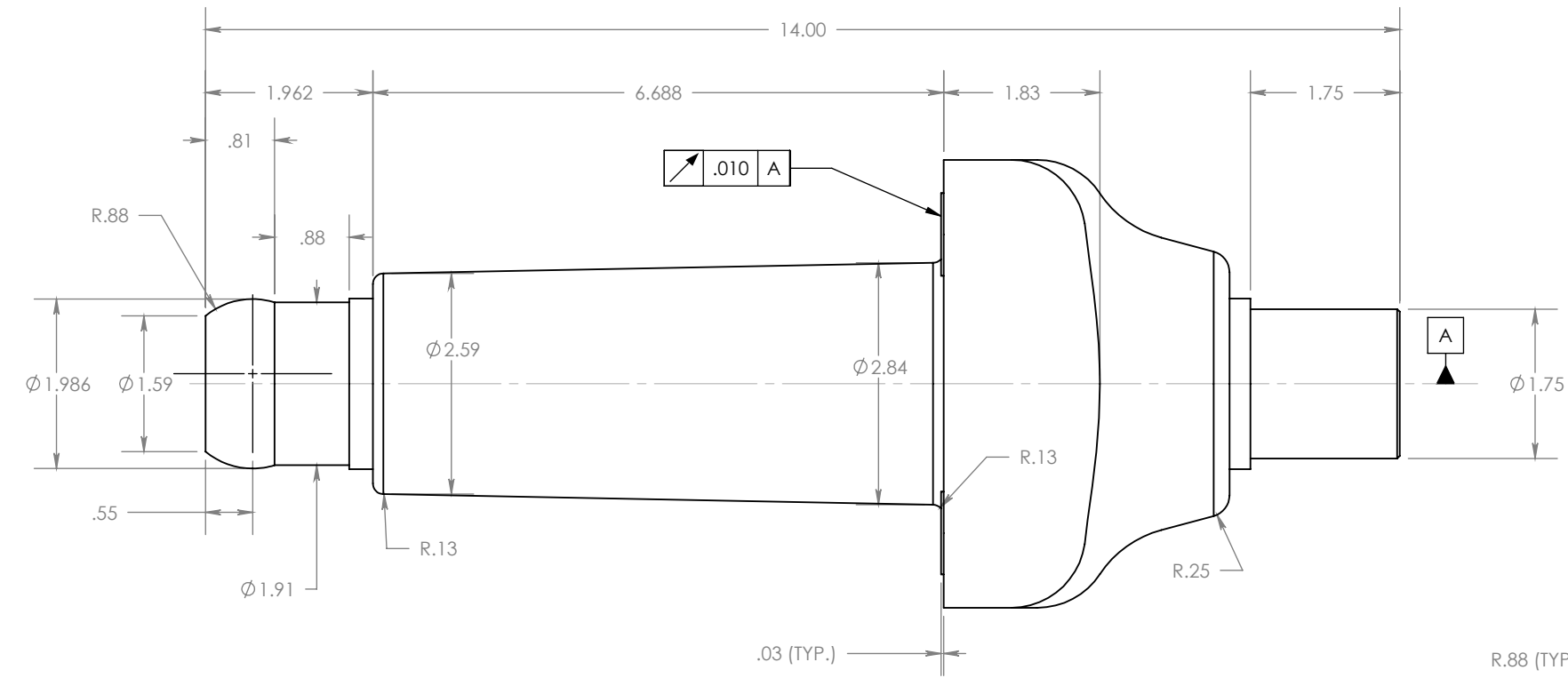
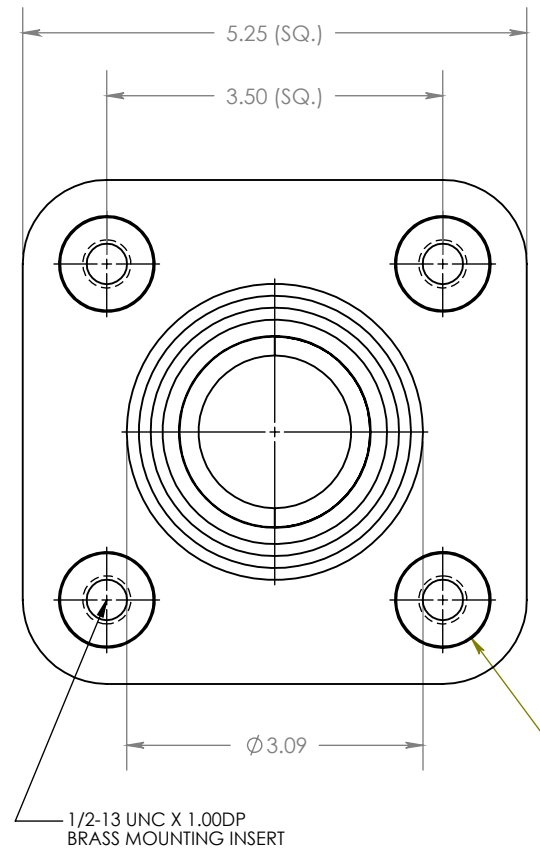


REVISIONS					
REV.	DATE	ECN#	DESCRIPTION	BY	APPROVED
1	5/5/03		E09 EPOXY WAS E04, 14.00 WAS 13.995	RM	DB



NOTES:
 1. ALL CONTACT SURFACES TO BE CLEAN & FREE FROM FLASH

MATERIAL:
 1. E09 - CYCLOALIPHATIC EPOXY (OUTDOOR)
 2. E06 - BISPHENOL-A EPOXY (INDOOR)
 3. HD ETP COPPER, C11000; FINISH SILVER PLATED .0005 MIN. THICKNESS

SPECIFICATIONS:
 1. RATED VOLTAGE 5kV
 2. POWER FREQUENCY WITHSTAND 19kV
 3. BASIC IMPULSE LEVEL 60KV
 4. NOMINAL CURRENT RATING 2000 AMPS
 5. LEAKAGE DISTANCE 4.13"
 6. TEMPERATURE CLASSIFICATION..... -50°C TO +105°C
 7. FINISHED WEIGHT 18.50 LBS.



H-J INTERNATIONAL, INC.
 3010 HIGH RIDGE BLVD, HIGH RIDGE, MO. 63049 USA
 PHONE 1-636-677-3421 FAX 1-636-376-1915

5kV, 2000A
 SWITCHGEAR
 BUSHING

PROPRIETARY AND CONFIDENTIAL
 THE INFORMATION CONTAINED IN THIS DRAWING IS THE SOLE PROPERTY OF H-J INTERNATIONAL, INC. ANY REPRODUCTION IN PART OR AS A WHOLE WITHOUT THE WRITTEN PERMISSION OF H-J INTERNATIONAL, INC. IS STRICTLY PROHIBITED.

BREAK ALL SHARPS UNLESS OTHERWISE NOTED

TOLERANCES (EXCEPT AS NOTED)	
ONE PLACE MM	±1.50
TWO PLACE MM	±0.75
TWO PLACE DEC.	±.060
THREE PLACE DEC.	±.030
FRACTIONS	± 1/16"
ANGLES	2°

APPROVED BY	DB	DATE	10/16/2002
CHECKED BY	RM	DATE	10/16/2002
DRAWN BY	DB	DATE	10/11/2002
TOOL NO.	T15-016-0		
PRODUCT GRP.	1500 SERIES		

DRAWING NO. 15-016-001			
SCALE	1:2	SIZE	B
REV.		SHEET	1 OF 1