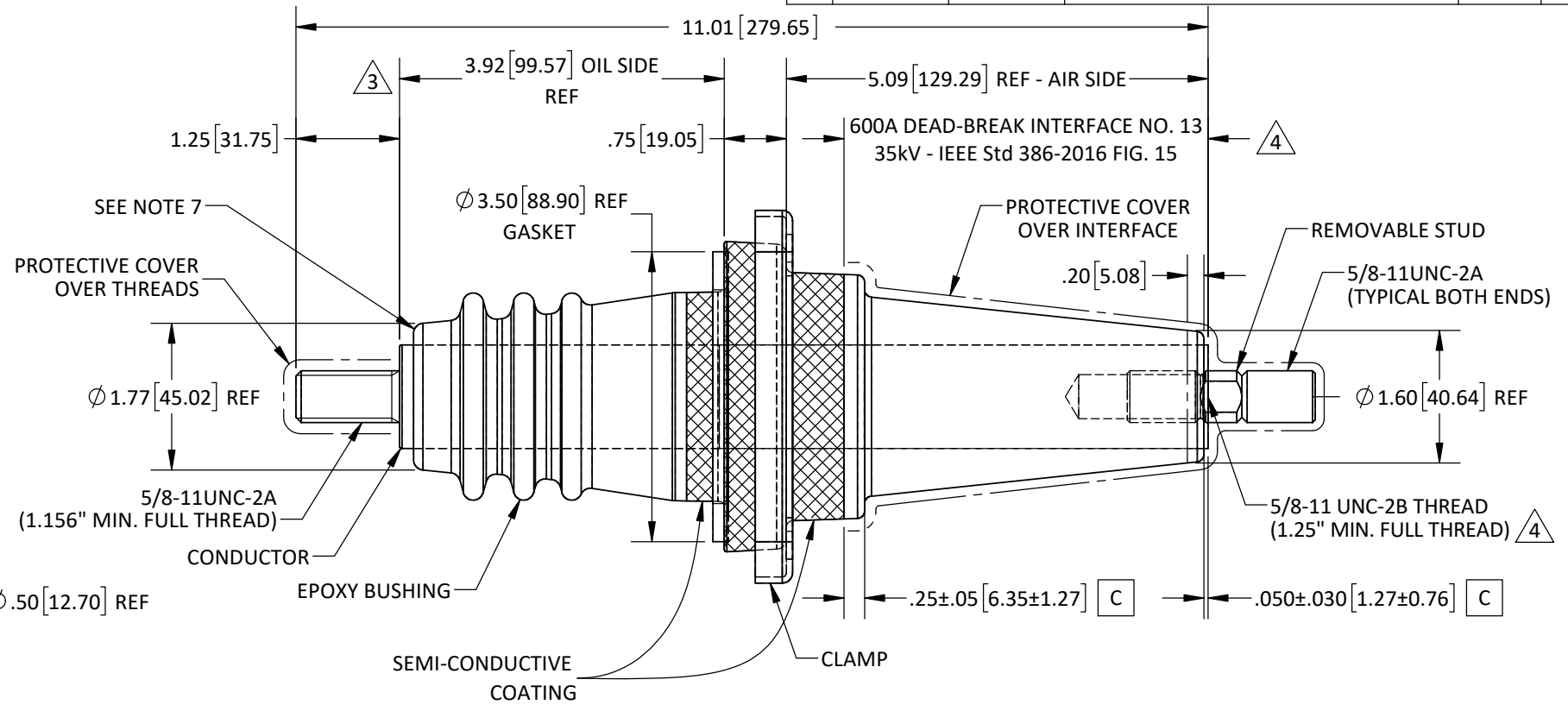
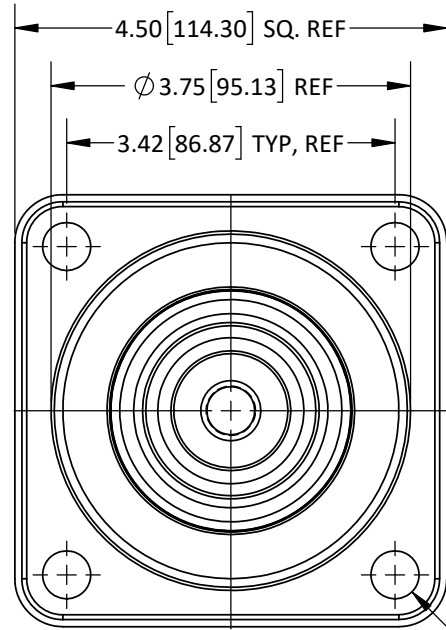


| REVISIONS | | | | | |
|-----------|-----------|--------------|--|-----|-------|
| REV. | DATE | ECN # | DESCRIPTION | BY | APP'D |
| 1 | 9/30/2016 | PQI#I0013267 | CHG'D AMP RATING, WAS 600A -TO- 900A | TJF | CJT |
| 2 | 8/31/2018 | PQI#I0019689 | ADDED E4 & E7 MAT'L & TEMP NOTE 8 | TJF | LO |
| 3 | 5/21/2019 | HJ19-062 | REMOVED .17 DIMENSION FROM SHOULDER OF CONDUCTOR TO EPOXY; MADE 3.92 DIM REF | MAD | CLS |
| 4 | 9/25/2019 | HJ19-129 | UPDATE IEEE Std TO 2016, TAP WAS 1.00" | CLS | LO |
| 5 | 5/7/2020 | HJ20-066 | ADDED SERIAL NO. NOTE | MAD | BG |



- NOTES:
- ALL CONTACT SURFACES TO BE CLEAN AND FREE FROM FLASH
 - THREADS TO BE CONCENTRIC WITH 3.00" DIA ± .010 T.I.R.
 - DESIGN PASSED POWER FREQUENCY WITHSTAND TEST AT 70kV (1 min)
 - DESIGN PASSED BASIC IMPULSE LEVEL TEST AT 170 kV
 - RECOMMENDED TANK HOLE SIZE IS Ø2.62" [66.55mm]
 - C - CRITICAL CHECK
 - SERIAL INFORMATION TO BE MARKED ON RIM, USING THIS FORMAT: "YEAR/MONTH/DAY/PRESS#/SHIFT/SHOT#" 5

- MATERIALS:
- BUSHING: E04 - BISPHENOL-A EPOXY, GREY (UV SHIELDED)
E07 - CYCLOALIPHATIC EPOXY, GREY (UV EXPOSED)
 - STUD: COPPER C11000 - TIN PLATED
 - CLAMP: 14 GA. H.R.P.O. STEEL

- SPECIFICATIONS:
- MANUFACTURED IN ACCORDANCE WITH IEEE Std 386-2016 4
 - MAXIMUM VOLTAGE CLASS 35kV
 - PHASE-TO-GROUND VOLTAGE RATING 21.1kV
 - POWER FREQUENCY WITHSTAND 50kV (1 MIN.)
 - BASIC IMPULSE LEVEL 150kV
 - PARTIAL DISCHARGE REQUIREMENT <3pC @ 26kV
 - CONTINUOUS CURRENT RATING 900A
 - TEMPERATURE: E4 MAT'L 120°C
E7 MAT'L 105°C

| | | | | |
|----------------------------|--|-----------------------------|--|--|
| | TOLERANCES (EXCEPT AS NOTED) DECIMAL ±.032"/.8mm FRACTIONAL ± ANGULAR ±2° | | H - J INTERNATIONAL, INC. 3010 HIGH RIDGE BLVD. HIGH RIDGE, MO. 63049 USA PHONE 1-636-677-3421 FAX 1-636-376-1915 | |
| | PROPRIETARY AND CONFIDENTIAL THE INFORMATION CONTAINED IN THIS DRAWING IS THE SOLE PROPERTY OF H-J INTERNATIONAL, INC. ANY REPRODUCTION IN PART OR AS A WHOLE WITHOUT THE WRITTEN PERMISSION OF H-J INTERNATIONAL, INC. IS PROHIBITED. | | BUSHING, DEAD-BREAK, 21.1kV/900A 1 | |
| DEBURR & BREAK SHARP EDGES | | DRAWN BY TJF DATE 9/29/2016 | MATERIAL (SEE DRAWING) | CHK'D CJT APP'D 9/29/16 DRAWING NO. 12-004-100 |