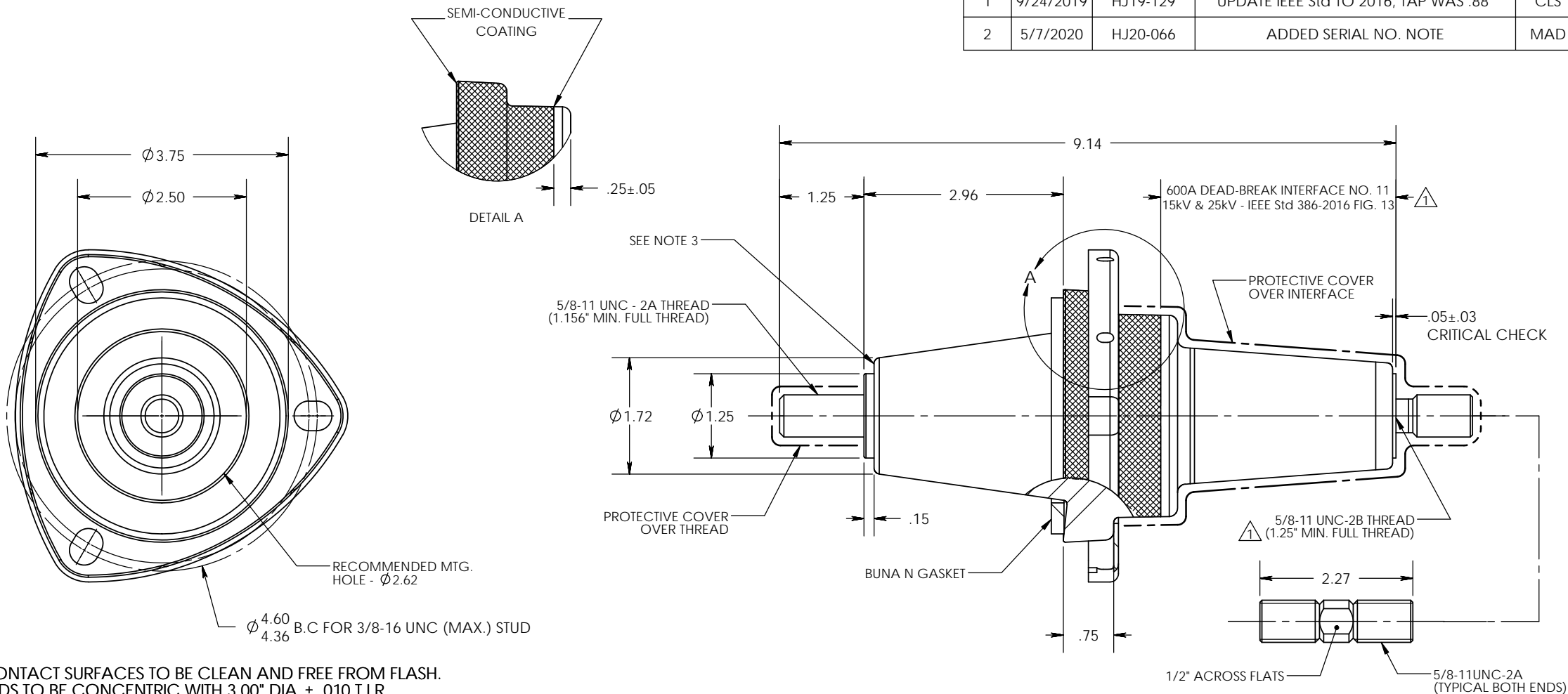


REVISIONS					
REV.	DATE	ECN #	DESCRIPTION	BY	APPROVED
1	9/24/2019	HJ19-129	UPDATE IEEE Std TO 2016, TAP WAS .88"	CLS	LO
2	5/7/2020	HJ20-066	ADDED SERIAL NO. NOTE	MAD	BG



- NOTES:
1. ALL CONTACT SURFACES TO BE CLEAN AND FREE FROM FLASH.
 2. THREADS TO BE CONCENTRIC WITH 3.00" DIA ± .010 T.I.R.
 3. SERIAL INFORMATION TO BE MARKED ON RIM, USING THIS FORMAT: "YEAR/MONTH/DAY/PRESS#/SHIFT/SHOT#"

MATERIALS:
 BUSHING: EPOXY, GREY
 CONDUCTOR: ALUMINUM ALLOY 6061-T651, TIN PLATED
 REMOVABLE STUD: ALUMINUM 6063-T6, TIN PLATED
 CLAMP: 14 GA. HRPO STEEL, ZINC DICHROMATE PLATED

- SPECIFICATIONS:
1. MANUFACTURED IN ACCORDANCE WITH IEEE Std 386-2016
 2. MAXIMUM VOLTAGE CLASS 15kV/25kV
 3. PHASE-TO-GROUND VOLTAGE RATING 15.2kV
 4. POWER FREQUENCY WITHSTAND 40kV (1 MIN.)
 5. BASIC IMPULSE LEVEL 125kV
 6. PARTIAL DISCHARGE REQUIREMENT <3pC @ 19kV
 7. CONTINUOUS CURRENT RATING 600A

PROPRIETARY AND CONFIDENTIAL
 THE INFORMATION CONTAINED IN THIS DRAWING IS THE SOLE PROPERTY OF H-J INTERNATIONAL, INC. ANY REPRODUCTION IN PART OR AS A WHOLE WITHOUT THE WRITTEN PERMISSION OF H-J INTERNATIONAL, INC. IS PROHIBITED.

TOLERANCES (EXCEPT AS NOTED)	
DECIMAL	
+/- .032"/.8mm	
FRACTIONAL	
+/-	
ANGULAR	
+/- 2 Degrees	



H - J INTERNATIONAL, INC.
 3010 HIGH RIDGE BLVD. HIGH RIDGE, MO. 63049 USA
 PHONE 1-636-677-3421 FAX 1-636-376-1915

BUSHING, DEAD-BREAK, 15.2kV/600A

MATERIAL		SEE DRAWING	
CHK'D	CJT	APP'D	10/07/16
DRAWING NO.		12-002-000	
DRAWN BY		CLS	DATE
SCALE		N.T.S.	