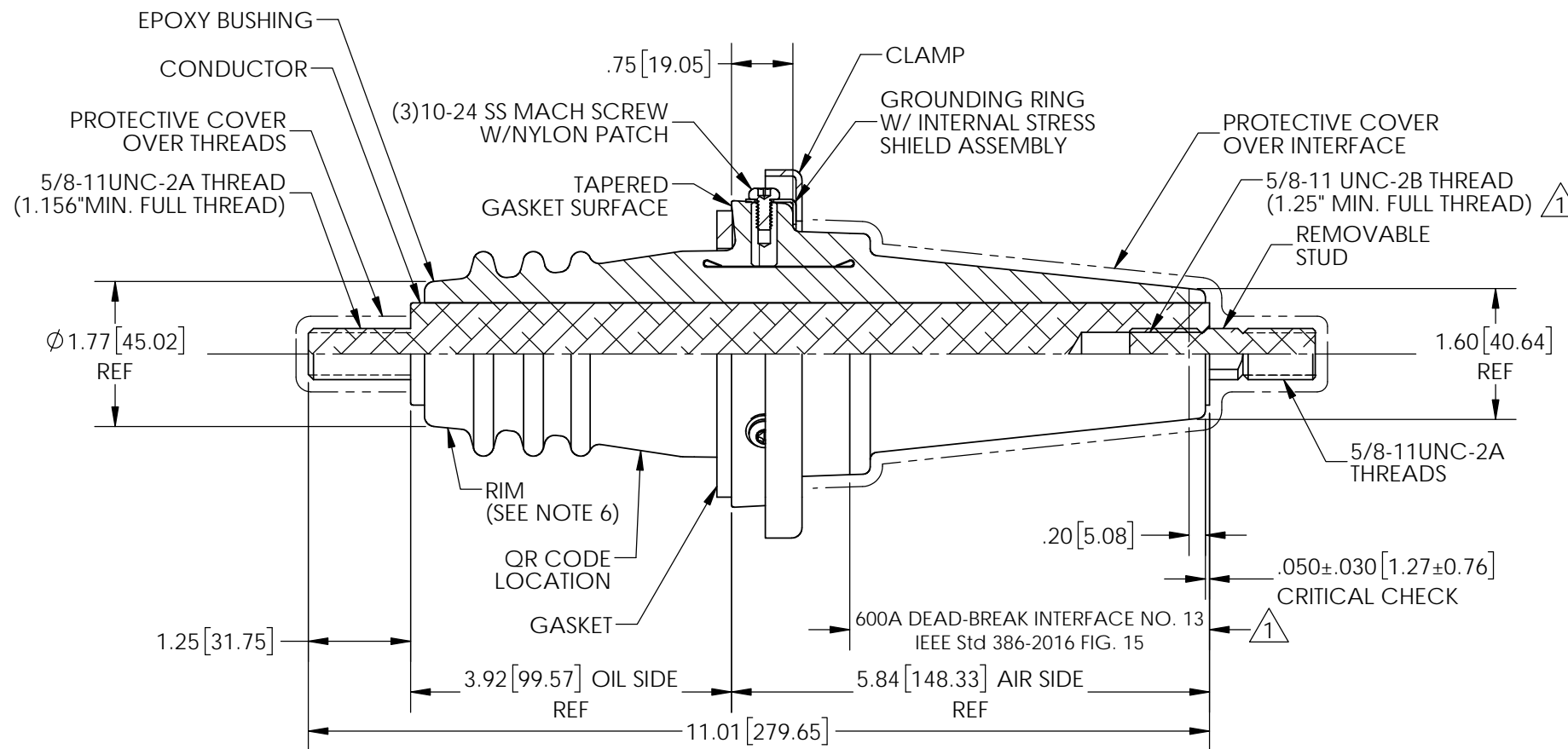
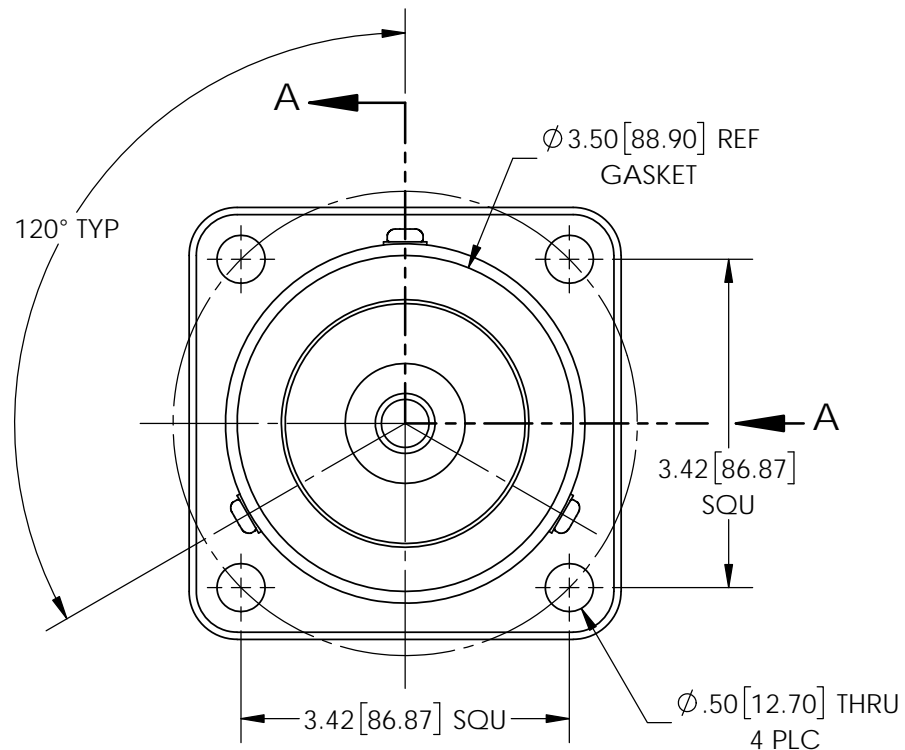


NOTES:

1. ALL CONTACT SURFACES TO BE CLEAN AND FREE FROM FLASH.
2. THREADS TO BE CONCENTRIC WITH  $\varnothing 3.00" \pm .010"$  T.I.R.
3. RECOMMENDED TANK HOLE SIZE IS  $\varnothing 2.62" [66.55\text{mm}]$
4. DO NOT TAMPER WITH SCREWS IN GROUNDING RING.
5. INCLUDES TWO (2) EXTRA BRASS NUTS AND TWO (2) EXTRA BRASS WASHERS, PACKED IN BULK.
6. LASER ETCH QR CODE ON SHANK, OPPOSITE CAVITY MARKING, USING PROGRAM 12-001-200. IF LASER ETCHING UNAVAILABLE, HAND ETCH SERIAL INFORMATION ON RIM USING FORMAT: YEAR/MONTH/DAY/PRESS#/SHIFT/SHOT#

③  
④

REVISIONS					
REV.	DATE	ECN #	DESCRIPTION	BY	APP'D
1	11/5/2019	HJ19-129	UPDATE IEEE Std TO 2016, TAP WAS 1.00"	CLS	LO
2	11/5/2019	HJ19-153	VOLT CLASS WAS 35KV, PHASE2GR'D WAS 21.1KV	CLS	LO
3	5/7/2020	HJ20-066	ADDED SERIAL NO. NOTE	MAD	BG
4	5/27/2022	HJ22-082	ADD LASER ETCHING WITH HAND ETCHING AS BACKUP	CLS	JL



SECTION A-A

MATERIALS:  
 BUSHING: EPOXY, GREY (E04/07) OR BLACK (E12)  
 STUD: ALUMINUM ALLOY 6061-T651  
 CLAMP: 14 GA. 304 STAINLESS STEEL

- SPECIFICATIONS:
- |  |                   |   |
|--|-------------------|---|
| 1. MANUFACTURED IN ACCORDANCE WITH         | IEEE Std 386-2016 | ① |
| 2. STANDARD VOLTAGE CLASS                  | 38kV              | ② |
| 3. MAX PHASE-TO-GROUND VOLTAGE RATING      | 22kV              |   |
| 4. POWER FREQUENCY WITHSTAND               | 70kV (1 MIN.)     |   |
| 5. BASIC IMPULSE LEVEL                     | 200kV             |   |
| 6. MIN PARTIAL DISCHARGE (3pC SENSITIVITY) | 26kV              |   |
| 7. CONTINUOUS CURRENT RATING               | 600A              |   |
| 8. TEMPERATURE RANGE:                      |                   |   |
| E04  | -40°C TO 120°C    |   |
| E07  | -40°C TO 105°C    |   |
| E12  | -30°C TO 155°C    |   |



**H-J INTERNATIONAL, INC.**  
 3010 HIGH RIDGE BLVD, HIGH RIDGE, MO. 63049 USA  
 PHONE 1-636-677-3421 FAX 1-636-376-1915

BUSHING, DEAD BREAK, 600A

<b>PROPRIETARY AND CONFIDENTIAL</b> THE INFORMATION CONTAINED IN THIS DRAWING IS THE SOLE PROPERTY OF H-J INTERNATIONAL, INC. ANY REPRODUCTION IN PART OR AS A WHOLE WITHOUT THE WRITTEN PERMISSION OF H-J INTERNATIONAL, INC. IS STRICTLY PROHIBITED.	<b>TOLERANCES</b> (EXCEPT AS NOTED)
	DECIMALS: $\pm .032/8\text{mm}$ ANGLES: $\pm 2^\circ$
BREAK ALL SHARPS UNLESS OTHERWISE NOTED	

APPROVED BY	DATE
CHECKED BY CJT	DATE 5/31/2019
DRAWN BY MAD	DATE 5/31/2019
TOOL NO.	T12-001-2
PRODUCT GRP.	1200 SERIES

MATERIAL (SEE DRAWING)	QTY.
DRAWING NO.	12-001-206
SCALE 1:2	SIZE B
REV. 4	SHEET 1 OF 1