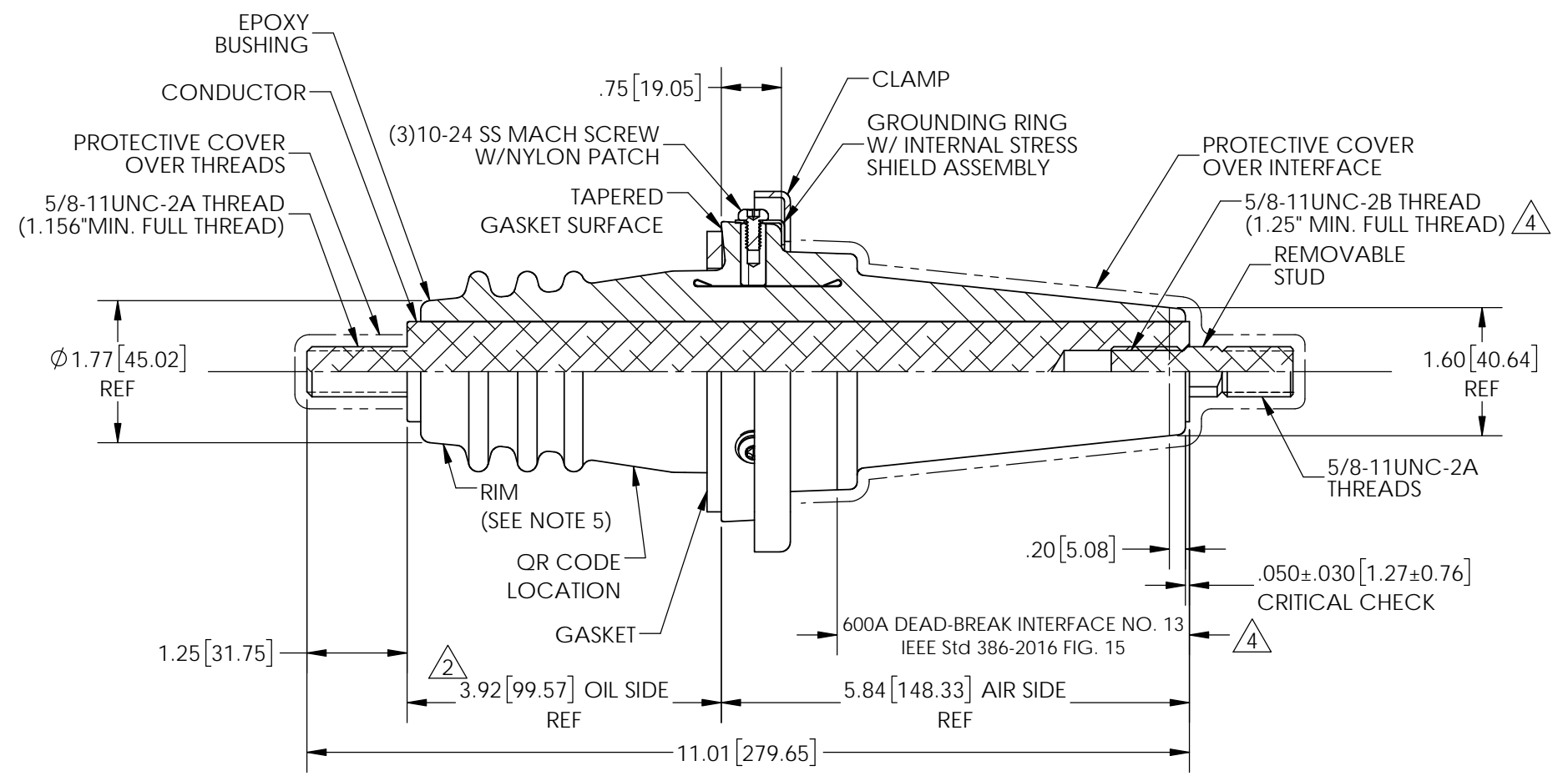
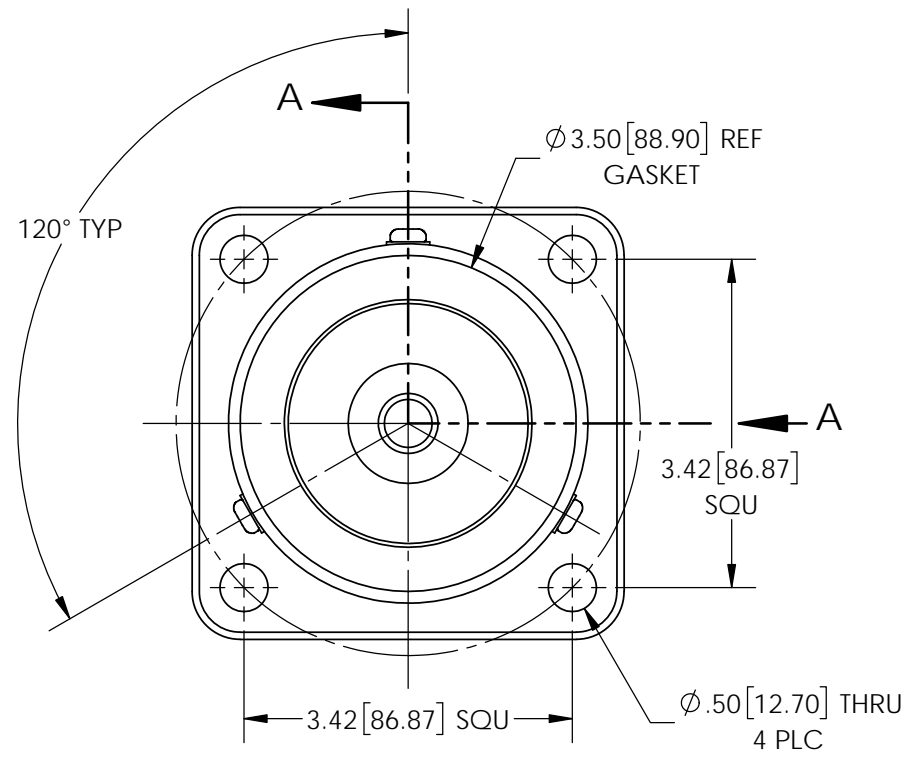


NOTES:

1. ALL CONTACT SURFACES TO BE CLEAN AND FREE FROM FLASH
2. THREADS TO BE CONCENTRIC WITH 3.00" DIA ± .010 T.I.R.
3. RECOMMENDED TANK HOLE SIZE IS Ø2.62" [66.55mm]
4. DO NOT TAMPER WITH SCREWS IN GROUNDING RING
5. LASER ETCH QR CODE ON SHANK, OPPOSITE CAVITY MARKING, USING PROGRAM 12-001-200. IF LASER ETCHING UNAVAILABLE, HAND ETCH SERIAL INFORMATION ON RIM USING FORMAT: YEAR/MONTH/DAY/PRESS#/SHIFT/SHOT#

6
7

REVISIONS					
REV.	DATE	ECN #	DESCRIPTION	BY	APP'D
1	2/23/2015	I0010235	CHG'D TITLE BLOCK, WAS HJI-TO-HJI	TJF	BLB
2	5/21/2019	HJ19-062	REMOVED .17 DIMENSION FROM SHOULDER OF CONDUCTOR TO EPOXY; MADE 3.92 DIM REF	MAD	CLS
3	5/28/2019	I0022534	ADDED TEMP RANGE AND E07 MATERIAL	MAD	CJT
4	11/5/2019	HJ19-129	UPDATE IEEE Std TO 2016, TAP WAS 1.00"	CLS	LO
5	11/5/2019	HJ19-153	VOLT CLASS WAS 35KV, PHASE2GR'D WAS 21.1KV	CLS	LO
6	5/7/2020	HJ20-066	ADDED SERIAL NO. NOTE	MAD	BG
7	5/27/2022	HJ22-082	ADD LASER ETCHING WITH HAND ETCHING AS BACKUP	CLS	JL



SECTION A-A

MATERIALS:
 BUSHING: EPOXY, GREY
 STUD: ALUMINUM ALLOY 6061-T651
 CLAMP: 14 GA. 304 STAINLESS STEEL

- SPECIFICATIONS:
1. MANUFACTURED IN ACCORDANCE WITH IEEE Std 386-2016
 2. STANDARD VOLTAGE CLASS 38kV
 3. MAX PHASE-TO-GROUND VOLTAGE RATING 22kV
 4. POWER FREQUENCY WITHSTAND 70kV (1 MIN.)
 5. BASIC IMPULSE LEVEL 200kV
 6. MIN PARTIAL DISCHARGE (3pC SENSITIVITY) 26kV
 7. CONTINUOUS CURRENT RATING 600A
 8. TEMPERATURE RANGE: E04 -40 °C TO 120 °C
 E07 -40 °C TO 105 °C

3

4
5



H-J INTERNATIONAL, INC.
 3010 HIGH RIDGE BLVD, HIGH RIDGE, MO. 63049 USA
 PHONE 1-636-677-3421 FAX 1-636-376-1915

BUSHING, DEAD BREAK, 600A

PROPRIETARY AND CONFIDENTIAL
 THE INFORMATION CONTAINED IN THIS DRAWING IS THE SOLE PROPERTY OF H-J INTERNATIONAL, INC. ANY REPRODUCTION IN PART OR AS A WHOLE WITHOUT THE WRITTEN PERMISSION OF H-J INTERNATIONAL, INC. IS STRICTLY PROHIBITED.

TOLERANCES (EXCEPT AS NOTED)
 DECIMALS: ±.032/8mm
 ANGLES: ± 2°

APPROVED BY	DATE
CHECKED BY NS	DATE 12/29/14
DRAWN BY TJF	DATE 12/29/2014
TOOL NO.	T12-001-2
PRODUCT GRP.	1200 SERIES

MATERIAL (SEE DRAWING)	QTY.
DRAWING NO.	12-001-200
SCALE 1:2	SIZE B
REV. 7	SHEET 1 OF 1