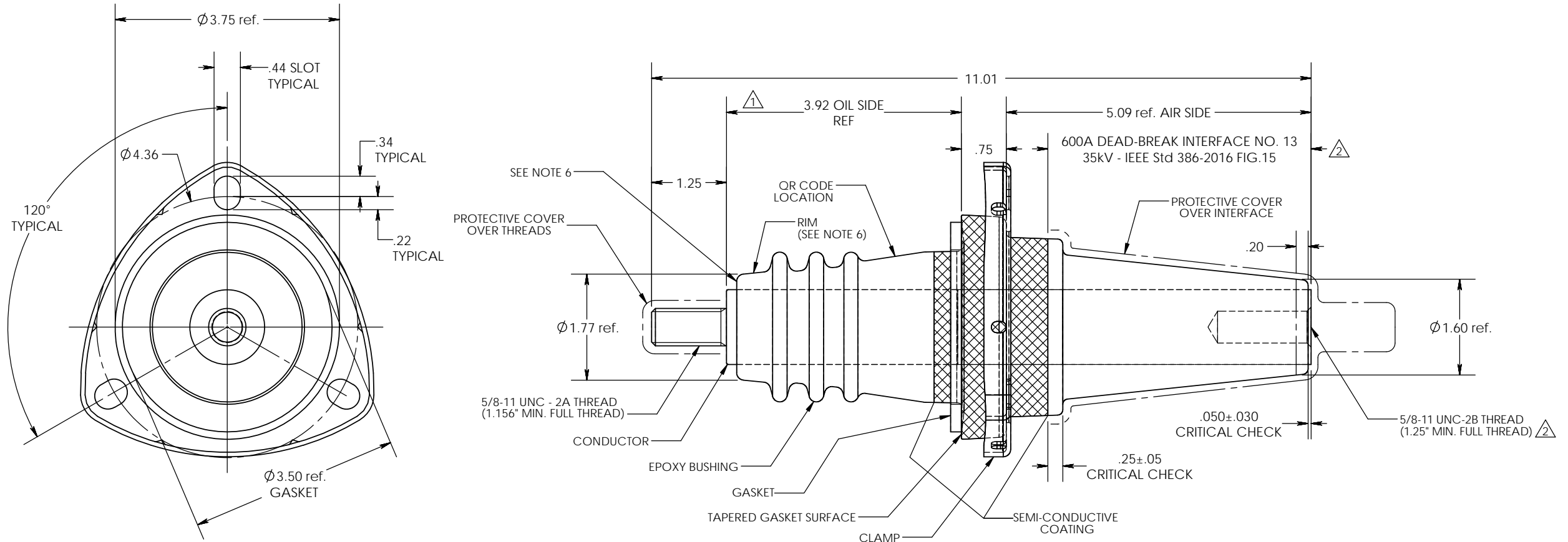


NOTES:

1. ALL CONTACT SURFACES TO BE CLEAN AND FREE FROM FLASH
2. THREADS TO BE CONCENTRIC WITH 3.00" DIA ± .010 T.I.R.
3. DESIGN PASSED POWER FREQUENCY WITHSTAND TEST AT 70kV (1 min)
4. DESIGN PASSED BASIC IMPULSE LEVEL TEST AT 170 kV
5. RECOMMENDED TANK HOLE SIZE IS Ø2.62" [66.55mm]
6. LASER ETCH QR CODE ON SHANK, OPPOSITE CAVITY MARKING, USING PROGRAM 12-001-100. IF LASER ETCHING UNAVAILABLE, HAND ETCH SERIAL INFORMATION ON RIM USING FORMAT: YEAR/MONTH/DAY/PRESS#/SHIFT/SHOT#



REVISIONS					
REV	DATE	ECN#	DESCRIPTION	BY	APPD
1	5/21/2019	HJ19-062	REM .17 DIM FOR EXPOSED CONDUCTOR, MADE 3.92 DIM REF	MAD	CLS
2	10/8/2019	HJ19-129	UPDATE IEEE Std TO 2016, TAP WAS 1.00"	CLS	LO
3	5/7/2020	HJ20-066	ADDED SERIAL NO. NOTE	MAD	BG
4	5/26/2022	HJ22-082	ADD LASER ETCHING WITH HAND ETCHING AS BACKUP	CLS	JL



MATERIALS:

BUSHING: EPOXY, GREY
 STUD: ALUMINUM ALLOY 6061-T651
 CLAMP: 14 GA. H.R.P.O. STEEL

SPECIFICATIONS:

1. MANUFACTURED IN ACCORDANCE WITH IEEE Std 386-2016 ²
2. MAXIMUM VOLTAGE CLASS 35kV
3. PHASE-TO-GROUND VOLTAGE RATING 21.1kV
4. POWER FREQUENCY WITHSTAND 50kV (1 MIN.)
5. BASIC IMPULSE LEVEL 150kV
6. PARTIAL DISCHARGE REQUIREMENT <3pC @ 26kV
7. CONTINUOUS CURRENT RATING 600A

PROPRIETARY AND CONFIDENTIAL
 THE INFORMATION CONTAINED IN THIS DRAWING IS THE SOLE PROPERTY OF H-J INTERNATIONAL, INC. ANY REPRODUCTION IN PART OR AS A WHOLE WITHOUT THE WRITTEN PERMISSION OF H-J INTERNATIONAL, INC. IS PROHIBITED.

TOLERANCES (EXCEPT AS NOTED)

- DECIMAL
- +/- .032"/.8mm
- FRACTIONAL
- +/-
- ANGULAR
- +/- 2 Degrees



H - J INTERNATIONAL, INC.
 3010 HIGH RIDGE BLVD. HIGH RIDGE, MO. 63049 USA
 PHONE 1-636-677-3421 FAX 1-636-376-1915

BUSHING, DEAD-BREAK, 21.1kV/600A

MATERIAL (SEE DRAWING)

CHK'D NK APP'D 08/07/13

DRAWING NO. 12-001-103

DRAWN BY CLS

DATE 08/07/2013

SCALE N.T.S.