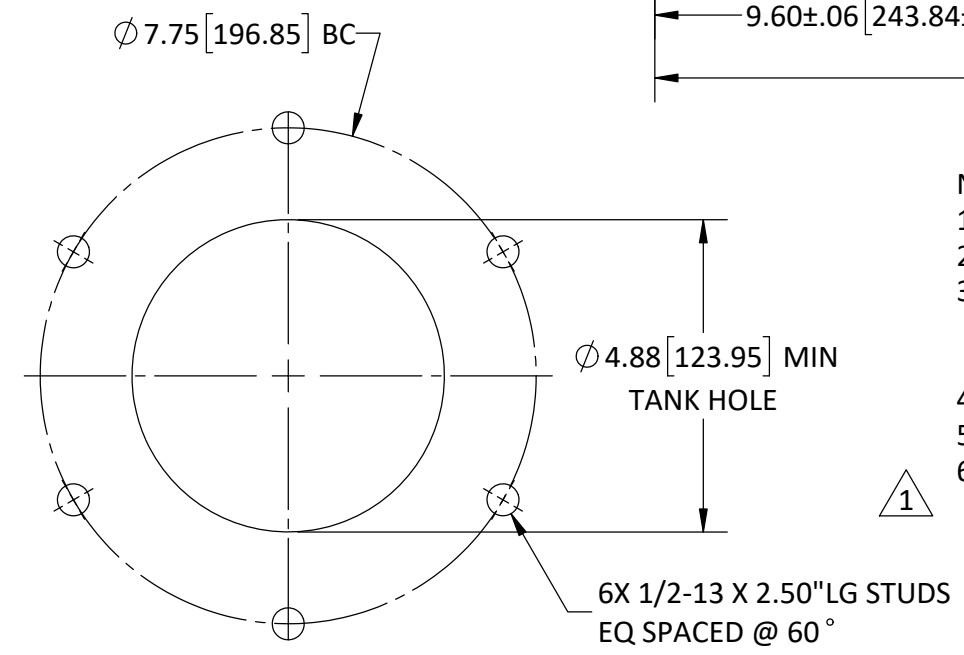
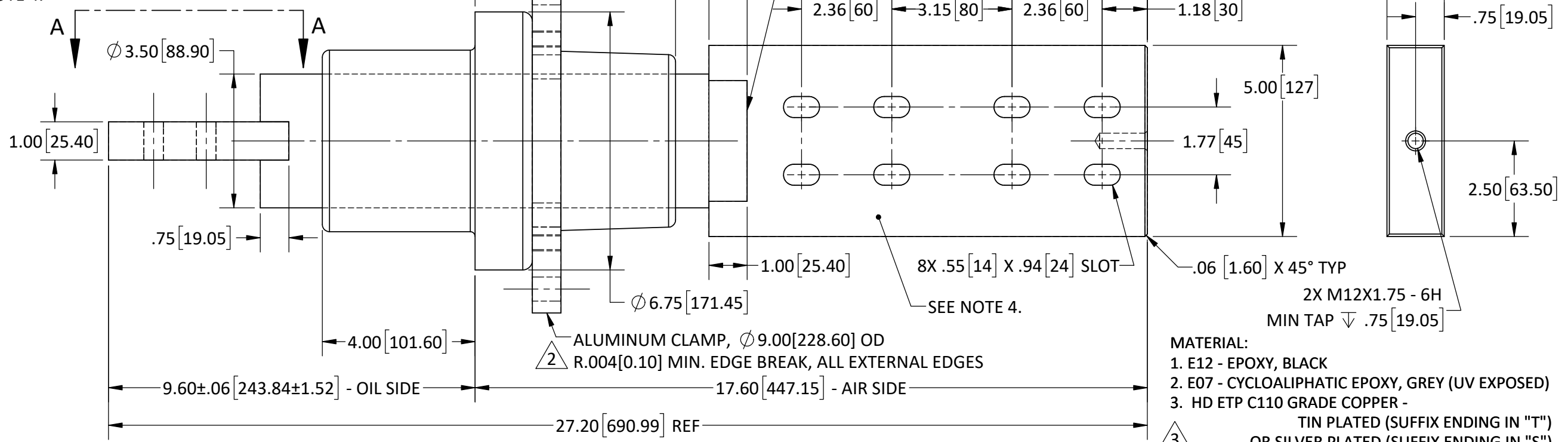
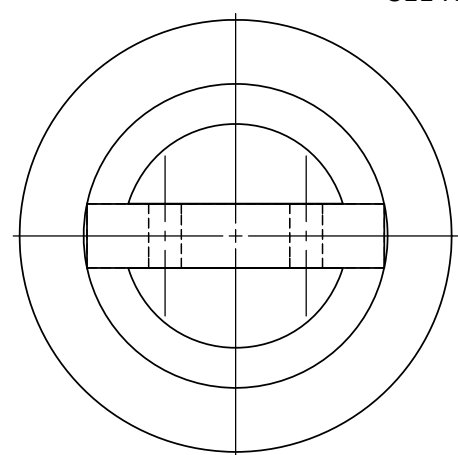
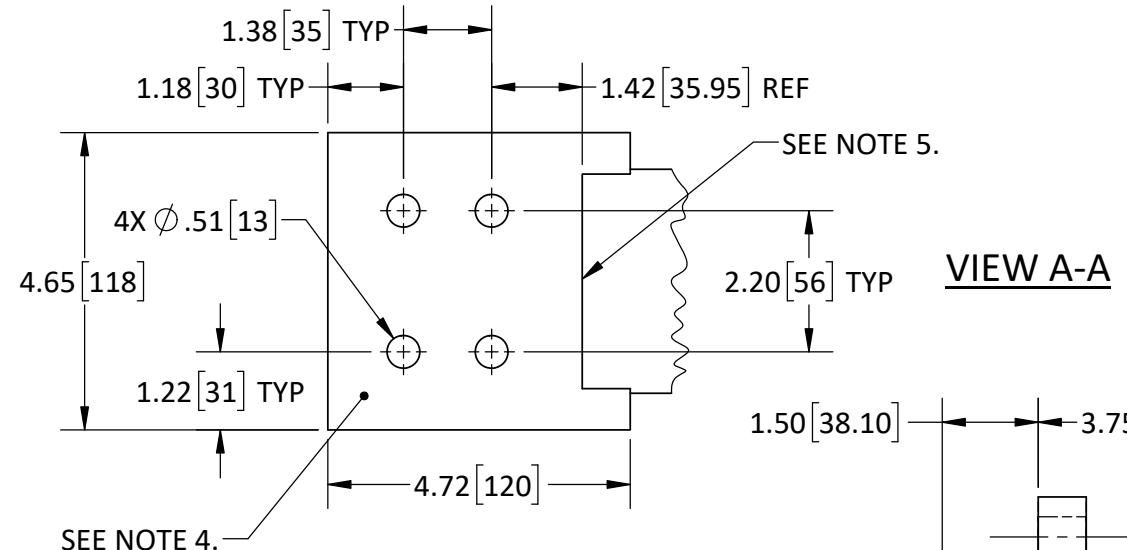


REVISIONS					
REV.	DATE	ECN #	DESCRIPTION	BY	APP'D
1	4/15/2021	HJ21-085	ADDED PERPENDICULARITY NOTE	MAD	CJT
2	6/18/2021	HJ21-122	ADDED EDGE BREAK CALLOUT TO CLAMP	CLS	LO
3	3/31/2022	PQI I2201005	ADDED SILVER PLATED OPTION	MAD	CJT



- NOTES:**
1. ALL UNSPECIFIED RADII TO BE R0.188
  2. ALL CONTACT SURFACES TO BE CLEAN & FREE FROM FLASH
  3. RATINGS BASED ON SIDE MOUNTED BUSHINGS WITH OIL IMMERSSED SHANK AND SUITABLE TERMINATION AND LEAD CONNECTIONS
  4. SPADE FLATNESS TOLERANCE:  $\square$  .02 (BOTH SIDES)
  5. MAX BRAZING RADIUS = 0.118" [3mm]
  6. EXTERNAL SPADE TO BE PERPENDICULAR WITHIN 0.5° TO THE BUSHING MOUNTING SURFACE (IN ALL DIRECTIONS)

**MATERIAL:**

1. E12 - EPOXY, BLACK
2. E07 - CYCLOALIPHATIC EPOXY, GREY (UV EXPOSED)
3. HD ETP C110 GRADE COPPER - TIN PLATED (SUFFIX ENDING IN "T") OR SILVER PLATED (SUFFIX ENDING IN "S")

**SPECIFICATIONS:**

1. BASIC IMPULSE LEVEL .....60kV
2. CONTINUOUS CURRENT RATING.....7000 AMPS
3. CONTINUOUS OPERATION TEMPERATURE  
E12 EPOXY.....-30 °C TO 155 °C  
E07 EPOXY.....-40 °C TO 105 °C
4. APPROXIMATE WEIGHT .....81.54 lb

**H-J INTERNATIONAL, INC.**  
3010 HIGH RIDGE BLVD, HIGH RIDGE, MO. 63049 USA  
PHONE 1-636-677-3421 FAX 1-636-376-1915

2.5kV/7000A  
SECONDARY BUSHING  
(COPPER CONDUCTOR)

DRAWING NO. **10-500-101**  
SCALE NTS SIZE B REV. 3 SHEET 1 OF 1

**PROPRIETARY AND CONFIDENTIAL**  
THE INFORMATION CONTAINED IN THIS DRAWING IS THE SOLE PROPERTY OF H-J INTERNATIONAL, INC. ANY REPRODUCTION IN PART OR AS A WHOLE WITHOUT THE WRITTEN PERMISSION OF H-J INTERNATIONAL, INC. IS STRICTLY PROHIBITED.  
BREAK ALL SHARPS UNLESS OTHERWISE NOTED

**TOLERANCES (EXCEPT AS NOTED)**  
TWO PLACE ±.060[1.52]  
THREE PLACE ±.030[0.76]  
FRACTIONS ± 1/16"  
ANGLES ±2°

APPROVED BY	---	DATE	--/--/----
CHECKED BY	BG	DATE	6/2/2020
DRAWN BY	MAD	DATE	6/2/2020
TOOL NO.	T10-500-1		
PRODUCT GRP.	1000 SERIES		

