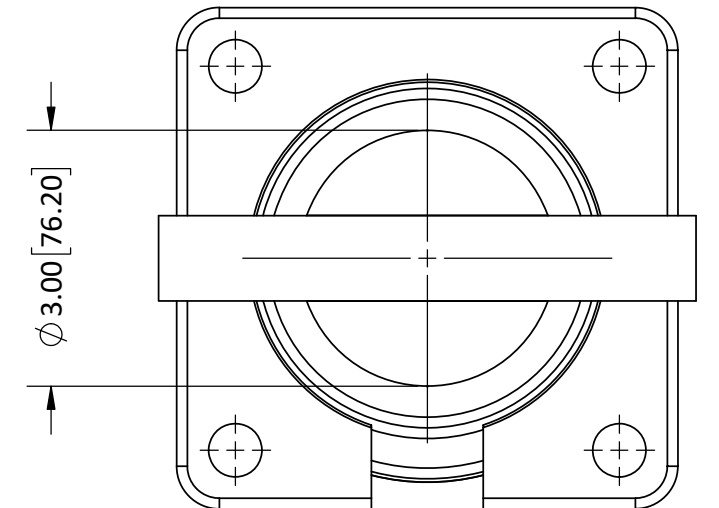
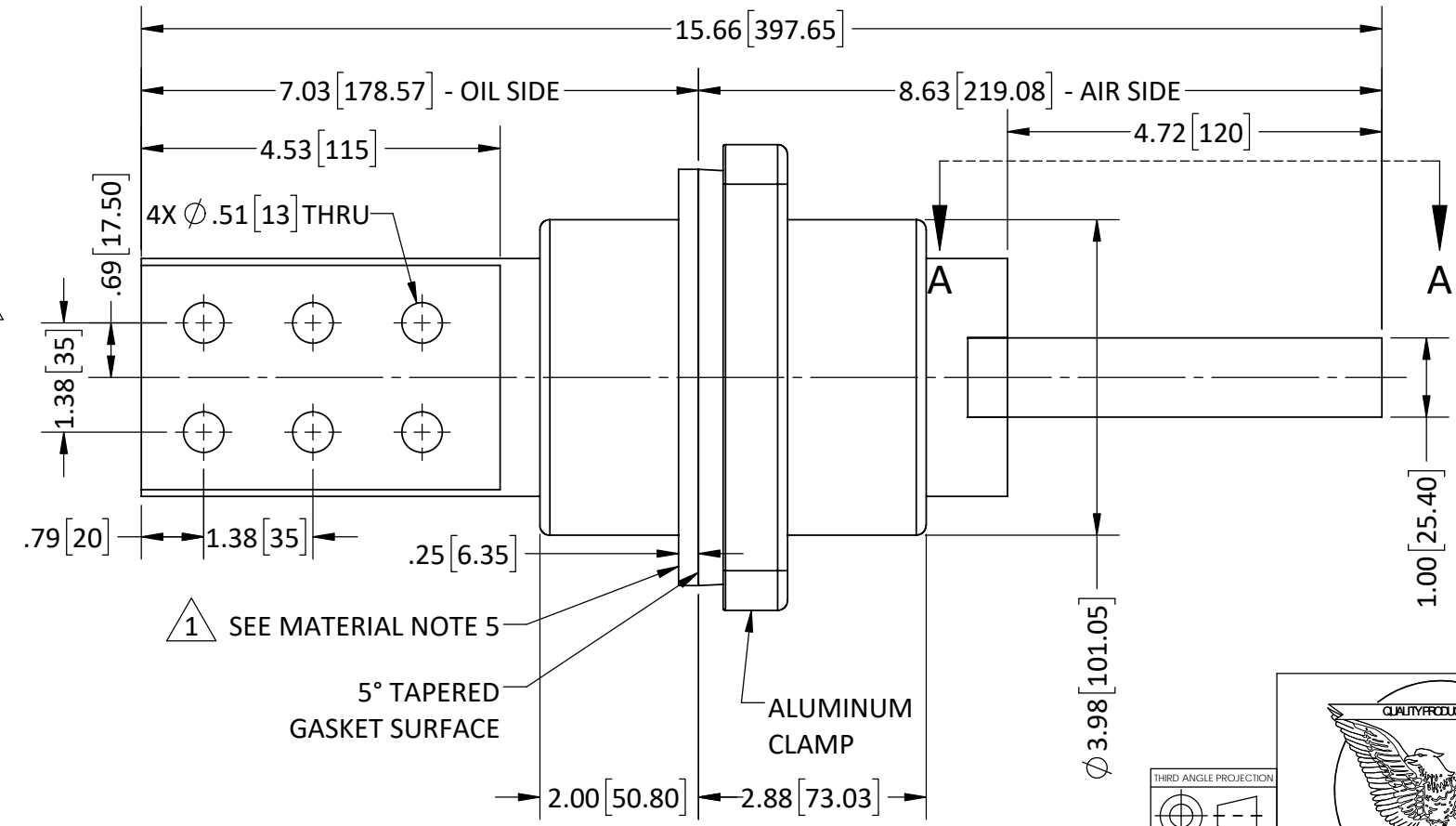
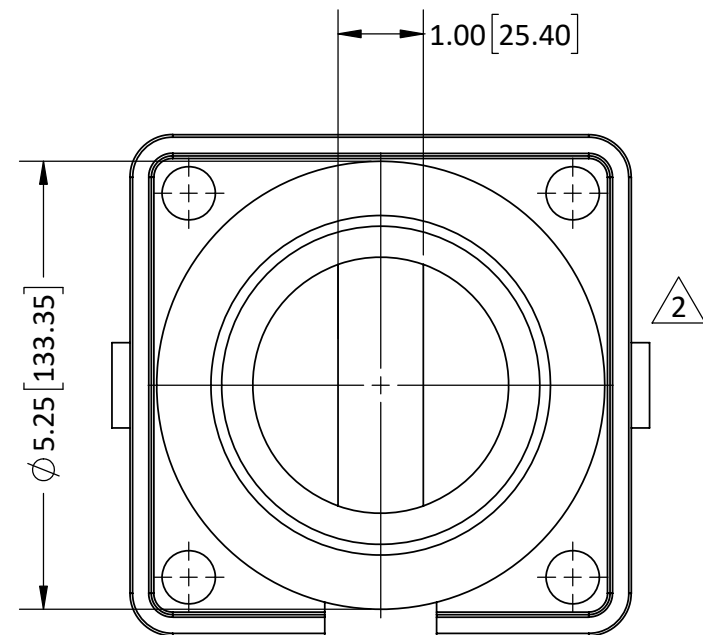
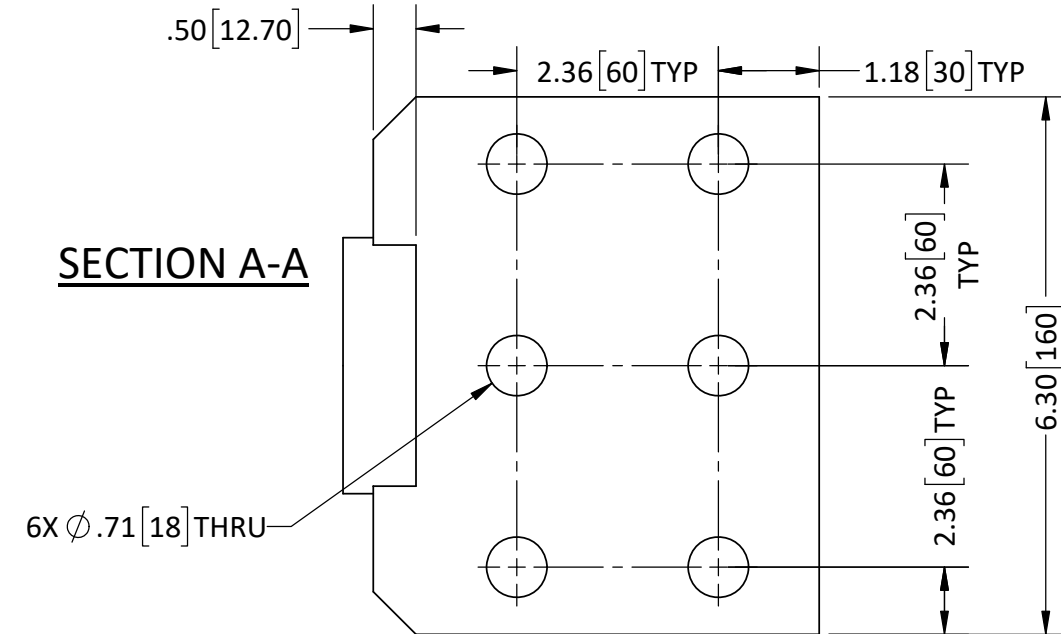
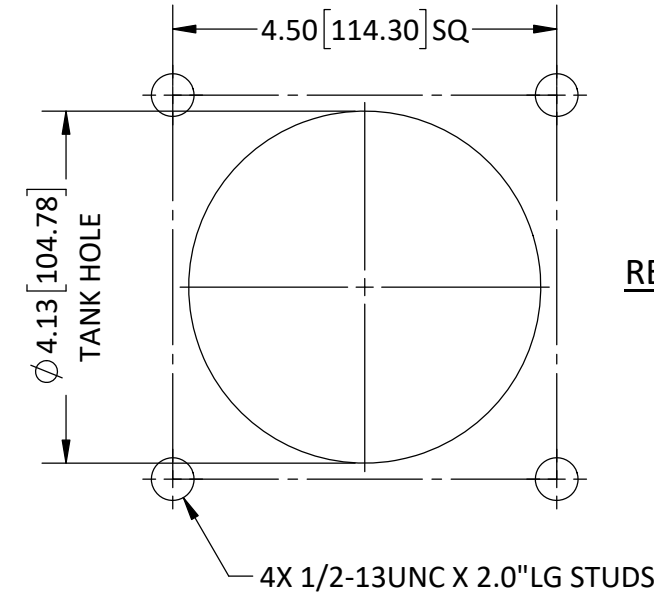


REVISIONS					
REV.	DATE	ECN #	DESCRIPTION	BY	APP'D
1	6/3/2020	PQI 22349	ADDED GASKET MAT'L CALLOUT DEPENDENT ON EPOXY	MAD	CJT
2	10/16/2020	HJ20-243	REMOVED ANTI-ROTATION SLOT	MAD	CJT
3	11/9/2020	HJ20-260	CHANGED CURRENT RATING TO 6000A	MAD	LO



- NOTES:
1. ALL UNSPECIFIED RADII TO BE R0.125
 2. ALL CONTACT SURFACES TO BE CLEAN & FREE FROM FLASH
 3. RATINGS BASED ON SIDE MOUNTED BUSHINGS WITH OIL IMMERSSED SHANK AND SUITABLE TERMINATION AND LEAD CONNECTIONS

- MATERIAL:
1. E04 - INDOOR EPOXY SYSTEM, GREY
 2. E12 - INDOOR EPOXY SYSTEM, BLACK
 3. HD ETP C11000 COPPER (CONDUCTOR), TIN PLATED
 4. 356.1 CAST ALUMINUM (CLAMP)
 5. GASKET WITH E04 BODY - BUNA N WITH E12 BODY - VITON

- SPECIFICATIONS:
1. BASIC IMPULSE LEVEL.....30kV
 2. CONTINUOUS CURRENT RATING.....6000A
 3. TEMPERATURE RANGE E04.....-40°C -TO- 120°C
E12.....-30°C -TO- 155°C

PROPRIETARY AND CONFIDENTIAL

THE INFORMATION CONTAINED IN THIS DRAWING IS THE SOLE PROPERTY OF H-J INTERNATIONAL, INC. ANY REPRODUCTION IN PART OR AS A WHOLE WITHOUT THE WRITTEN PERMISSION OF H-J INTERNATIONAL, INC. IS STRICTLY PROHIBITED.

BREAK ALL SHARPS UNLESS OTHERWISE NOTED

TOLERANCES (EXCEPT AS NOTED)

ONE PLACE MM ±1.50
TWO PLACE MM ±0.75
TWO PLACE DEC. ±0.60
THREE PLACE DEC. ±0.30
FRACTIONS ±1/16"
ANGLES 2°



H-J INTERNATIONAL, INC.
3010 HIGH RIDGE BLVD, HIGH RIDGE, MO. 63049 USA
PHONE 1-636-677-3421 FAX 1-636-376-1915

1.2kV / 6000A (MAX.)
LV BUSHING ASSEMBLY
(COPPER CONDUCTOR)

APPROVED BY	DATE
CHECKED BY	DATE
DRAWN BY MAD	DATE 7/3/2019
TOOL NO.	T10-047-0
PRODUCT GRP.	1000 SERIES

DRAWING NO.	10-047-000			
SCALE 1:2	SIZE B	REV. 3	SHEET 1	OF 1