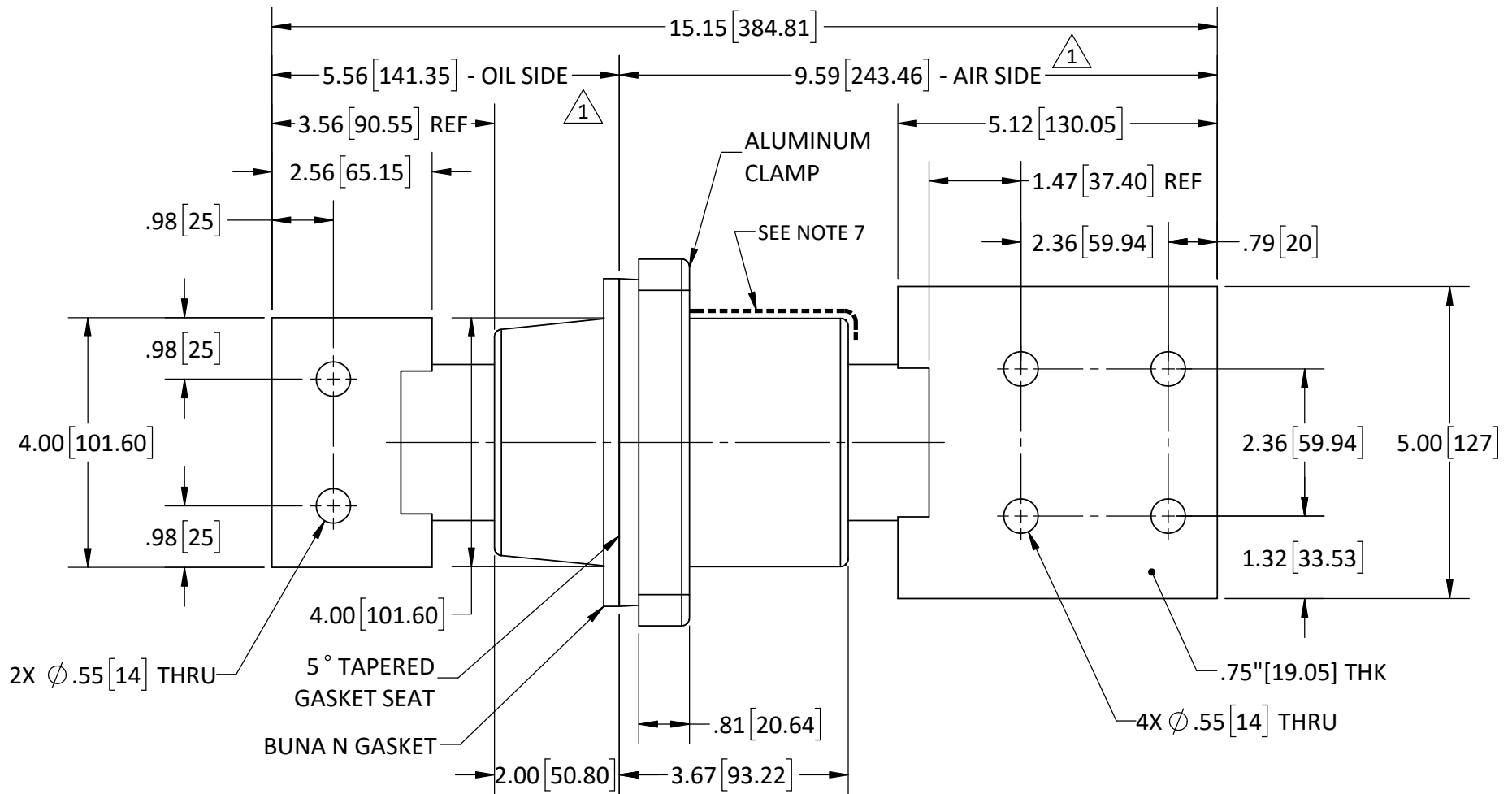
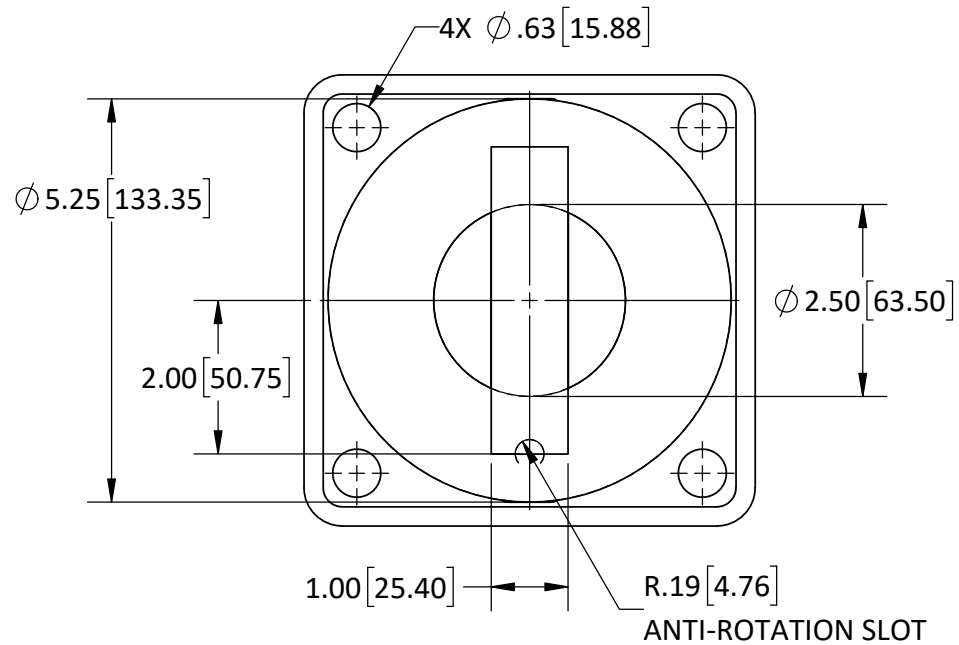
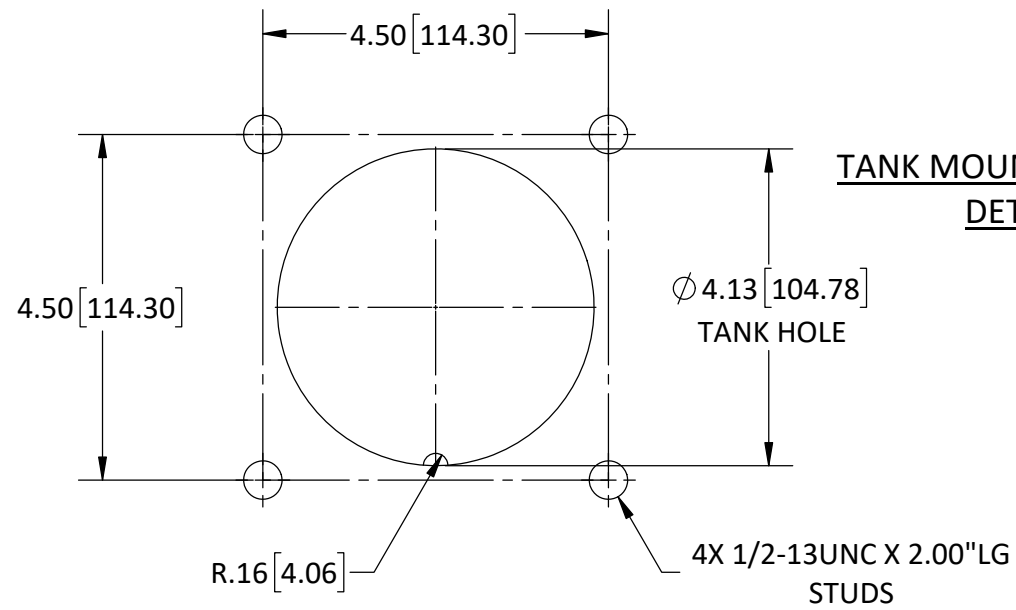


REVISIONS					
REV.	DATE	ECN #	DESCRIPTION	BY	APP'D
1	7/29/2019	HJ19-119	CHG'D LEADER LINE LOCATION, WAS GASKET - TO- EPOXY. CHG'D DIMS, WAS 5.31-TO-6.56, WAS 9.84-TO- 9.59	TJF	LO
2	12/17/2019	HJ19-197	INSTALLATION TORQUE WAS 9 FT-LB	CLS	LO

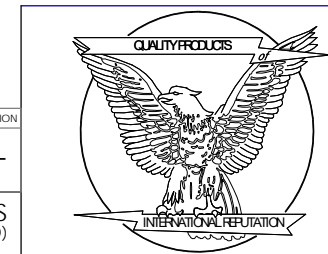
**TANK MOUNTING HOLE
DETAIL**



- NOTES:
1. ALL UNSPECIFIED RADII TO BE R0.125"
 2. ALL CONTACT SURFACES TO BE CLEAN & FREE FROM FLASH
 3. RATINGS BASED ON SIDE MOUNTED BUSHINGS WITH OIL IMMERSIED SHANK AND SUITABLE TERMINATION AND LEAD CONNECTIONS

- MATERIAL:
1. E04 - INDOOR EPOXY SYSTEM, GREY
 2. HD ETP C11000 COPPER (CONDUCTOR), TIN PLATED
 3. 356.1 CAST ALUMINUM (CLAMP)

- SPECIFICATIONS:
1. BASIC IMPULSE LEVEL60kV
 2. CHOPPED WAVE IMPULSE RATING.....55kV (2µS MIN)
 3. DRY AC WITHSTAND RATING.....10kV
 4. CONTINUOUS CURRENT RATING.....5000A
 5. TEMPERATURE CLASSIFICATION.....- 40°C to 120°C
 6. INSTALLATION TORQUE: 7 FT-LB IN A DIAGONAL METHOD IN REDUCED TORQUE STEPS. \triangle
 7. TOTAL CREEP DISTANCE.....3.39" [86.11mm]



H-J INTERNATIONAL, INC.
3010 HIGH RIDGE BLVD, HIGH RIDGE, MO. 63049 USA
PHONE 1-636-677-3421 FAX 1-636-376-1915

3.6kV - 60kV BIL
LV BUSHING
5000 AMP

PROPRIETARY AND CONFIDENTIAL
THE INFORMATION CONTAINED IN THIS DRAWING IS THE SOLE PROPERTY OF H-J INTERNATIONAL, INC. ANY REPRODUCTION IN PART OR AS A WHOLE WITHOUT THE WRITTEN PERMISSION OF H-J INTERNATIONAL, INC. IS STRICTLY PROHIBITED.

TOLERANCES (EXCEPT AS NOTED)
TWO PLACE DEC. ±.060" [1.52mm]
THREE PLACE DEC. ±.030" [.76mm]
FRACTIONS ± 1/16"
ANGLES 2°

BREAK ALL SHARPS UNLESS OTHERWISE NOTED

THIRD ANGLE PROJECTION

APPROVED BY	---	DATE	--/--/----
CHECKED BY	CJT	DATE	05/24/2019
DRAWN BY	CLS	DATE	05/16/2019
TOOL NO.	T10-045-0		
PRODUCT GRP.	1000 SERIES		

DRAWING NO. **10-045-002**

SCALE 1:2.5 SIZE B REV. 2 SHEET 1 OF 1