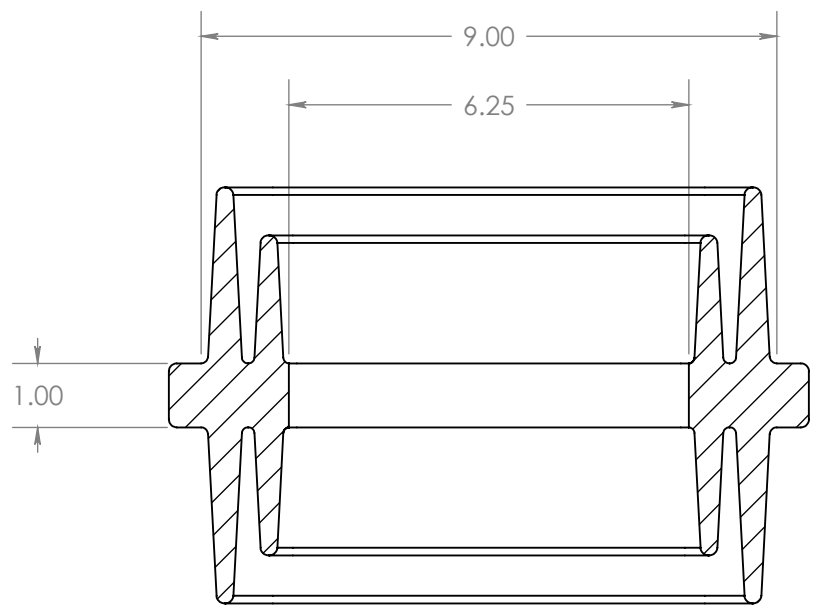
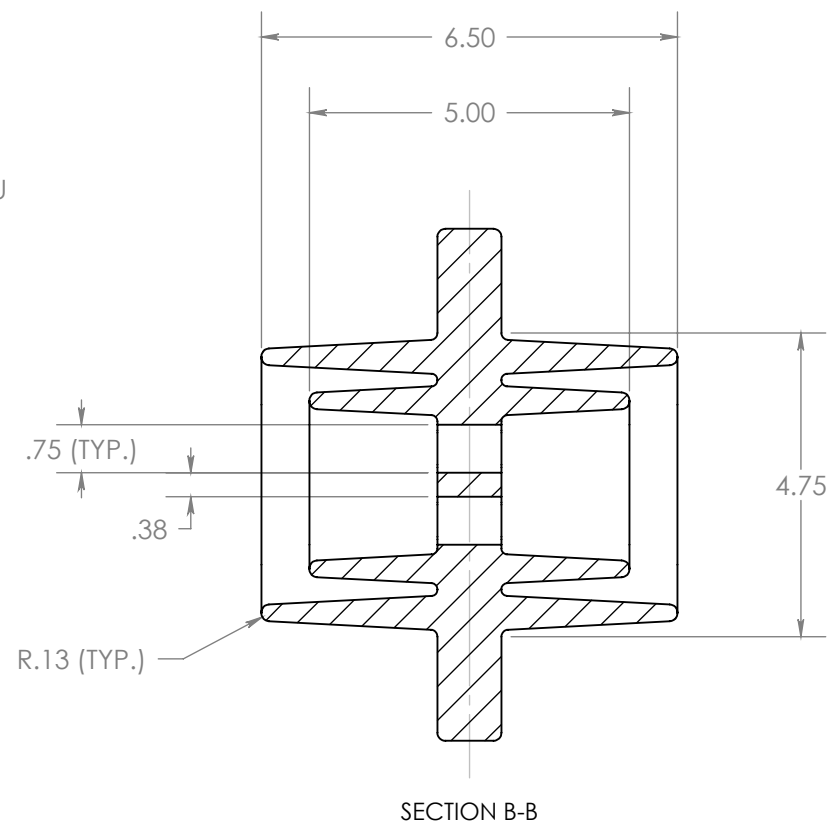
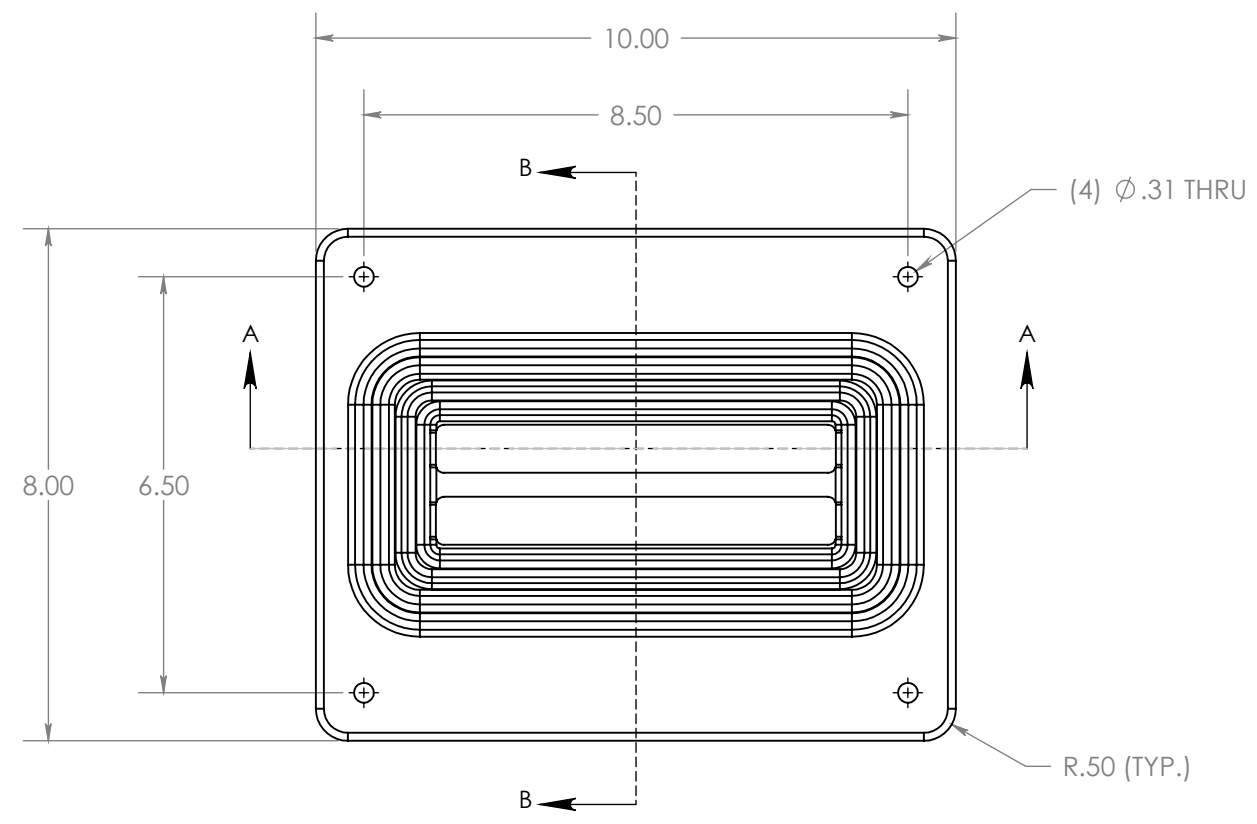


REVISIONS					
REV.	DATE	ECN#	DESCRIPTION	BY	APPROVED
1	10/31/2001		EPOXY DESIGNATION WAS E01	DB	DB
2	1/22/2009		UPDATED DRAWING TO HJI TEMPLATE.	JH	DB
3	5/20/2011		TITLE DESCRIPTION WAS "SINGLE WINDOW"	CMH	



**MATERIAL:**  
 1. BISPHENOL-A EPOXY (INDOOR, GREY)

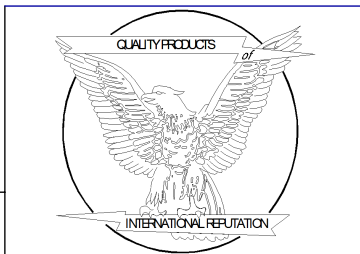
**SPECIFICATIONS:**  
 1. BASIC IMPULSE LEVEL ..... 110KV  
 2. RECOMMENDED OPENING ..... 5.0" X 9.0"  
 3. TEMPERATURE CLASSIFICATION..... -50 °C TO 105 °C

**PROPRIETARY AND CONFIDENTIAL**  
 THE INFORMATION CONTAINED IN THIS DRAWING IS THE SOLE PROPERTY OF H-J INTERNATIONAL, INC. ANY REPRODUCTION IN PART OR AS A WHOLE WITHOUT THE WRITTEN PERMISSION OF H-J INTERNATIONAL, INC. IS STRICTLY PROHIBITED.

**BREAK ALL SHARPS UNLESS OTHERWISE NOTED**

**TOLERANCES (EXCEPT AS NOTED)**

ONE PLACE MM	±1.50
TWO PLACE MM	±0.75
TWO PLACE DEC.	±.060
THREE PLACE DEC.	±.030
FRACTIONS	± 1/16"
ANGLES	2°



APPROVED BY	DB	DATE	4/18/2001
CHECKED BY	RM	DATE	4/18/2001
DRAWN BY	DB	DATE	4/18/2001
TOOL NO.	T07-205		
PRODUCT GRP.	700 SERIES		

**H-J INTERNATIONAL, INC.**  
 3010 HIGH RIDGE BLVD, HIGH RIDGE, MO. 63049 USA  
 PHONE 1-636-677-3421 FAX 1-636-376-1915

**15KV WALL BUSHING**  
**.75 X 6.25**  
**DOUBLE WINDOW**

DRAWING NO. **07-205-003**

SCALE **1:3** SIZE **B** REV. **3** SHEET **1** OF **1**

3