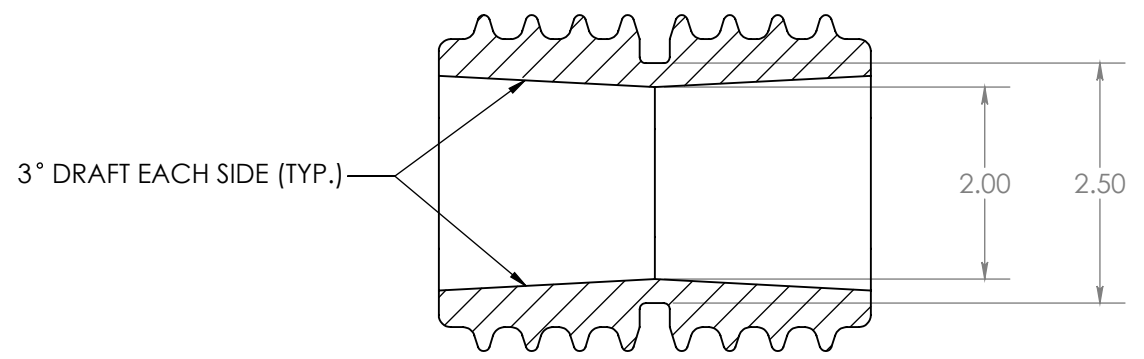
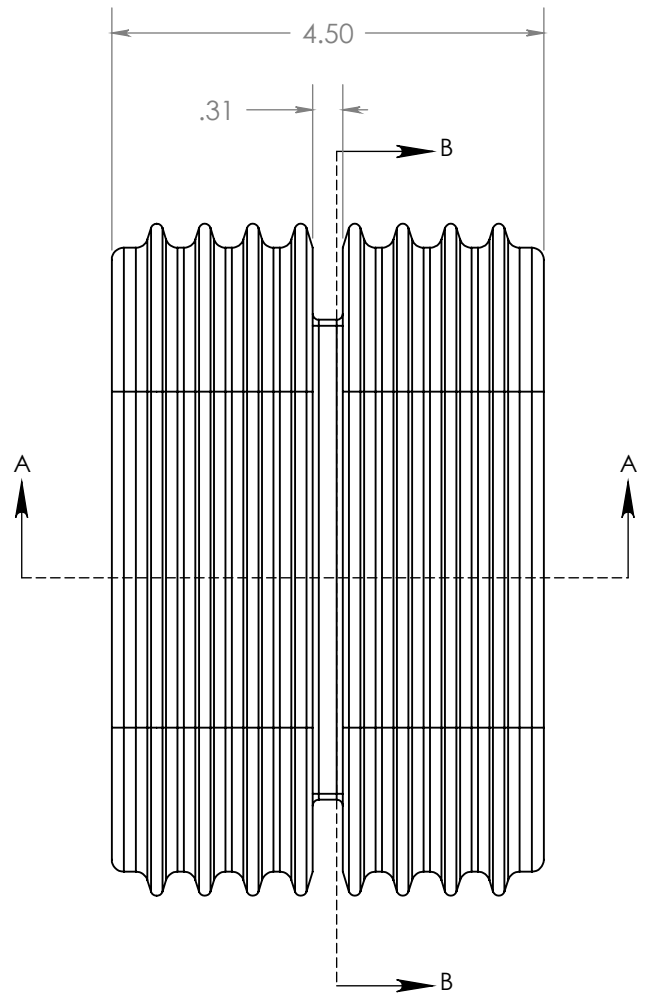
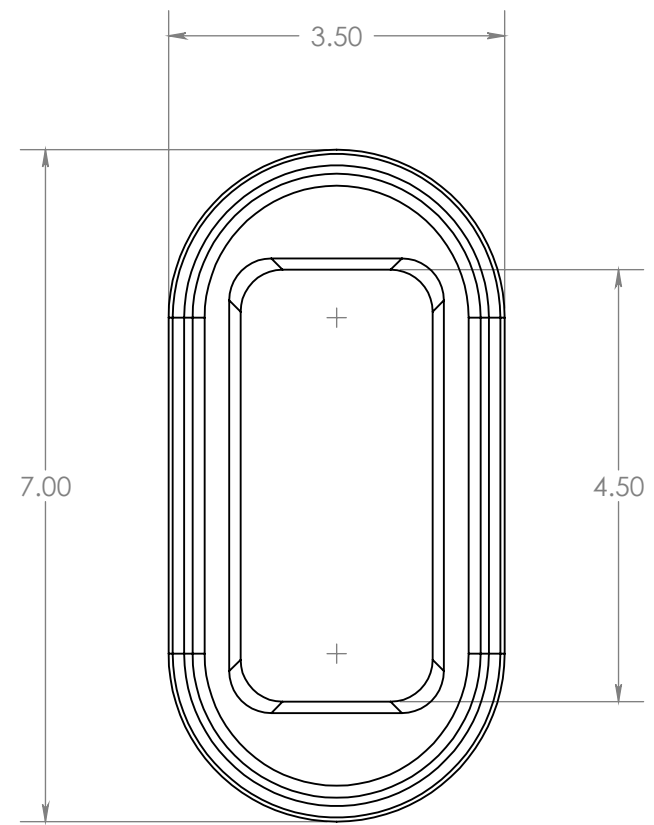


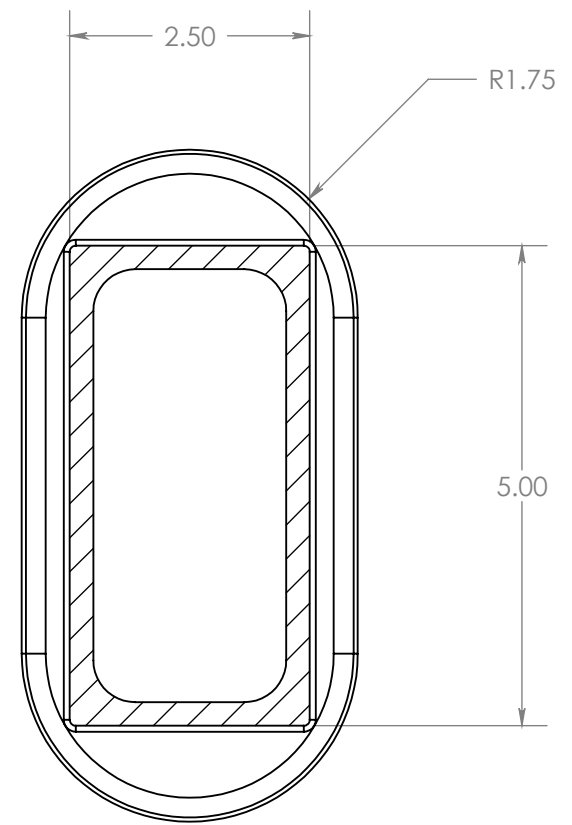
REVISIONS					
REV.	DATE	ECN#	DESCRIPTION	BY	APPROVED
1	1/22/2009		UPDATED DRAWING TO HJI TEMPLATE.	JH	DB



SECTION A-A



SECTION B-B



NOTES:
 1. VOLTAGE RATING VARIES WITH MOUNTING PLATE MATERIALS, PROXIMITY TO GROUND AND PHASE TO PHASE CLEARANCES

MATERIAL:
 1. BISPHENOL-A EPOXY (INDOOR, GREY)

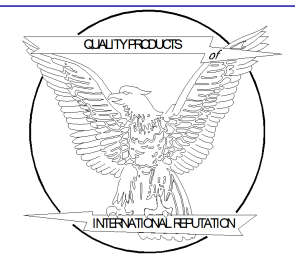
SPECIFICATIONS:
 1. RECOMMENDED OPENING 2.5" X 5.0"
 2. TEMPERATURE CLASSIFICATION..... -50°C TO 105°C
 3. APPROXIMATE WEIGHT 2.6 LBS

PROPRIETARY AND CONFIDENTIAL
 THE INFORMATION CONTAINED IN THIS DRAWING IS THE SOLE PROPERTY OF H-J INTERNATIONAL, INC. ANY REPRODUCTION IN PART OR AS A WHOLE WITHOUT THE WRITTEN PERMISSION OF H-J INTERNATIONAL, INC. IS STRICTLY PROHIBITED.

BREAK ALL SHARPS UNLESS OTHERWISE NOTED

TOLERANCES (EXCEPT AS NOTED)

ONE PLACE MM	±1.50
TWO PLACE MM	±0.75
TWO PLACE DEC.	±.060
THREE PLACE DEC.	±.030
FRACTIONS	± 1/16"
ANGLES	2°



APPROVED BY	DB	DATE	10/14/2003
CHECKED BY	RM	DATE	10/14/2003
DRAWN BY	DB	DATE	10/11/2003
TOOL NO.	T07-203-0		
PRODUCT GRP.	700 SERIES		

H-J INTERNATIONAL, INC.
 3010 HIGH RIDGE BLVD, HIGH RIDGE, MO. 63049 USA
 PHONE 1-636-677-3421 FAX 1-636-376-1915

CUSTOM WALL BUSHING
2.00" X 4.50" WINDOW

DRAWING NO. **07-203-001**

SCALE **1:2** SIZE **B** REV. **1** SHEET **1** OF **1**